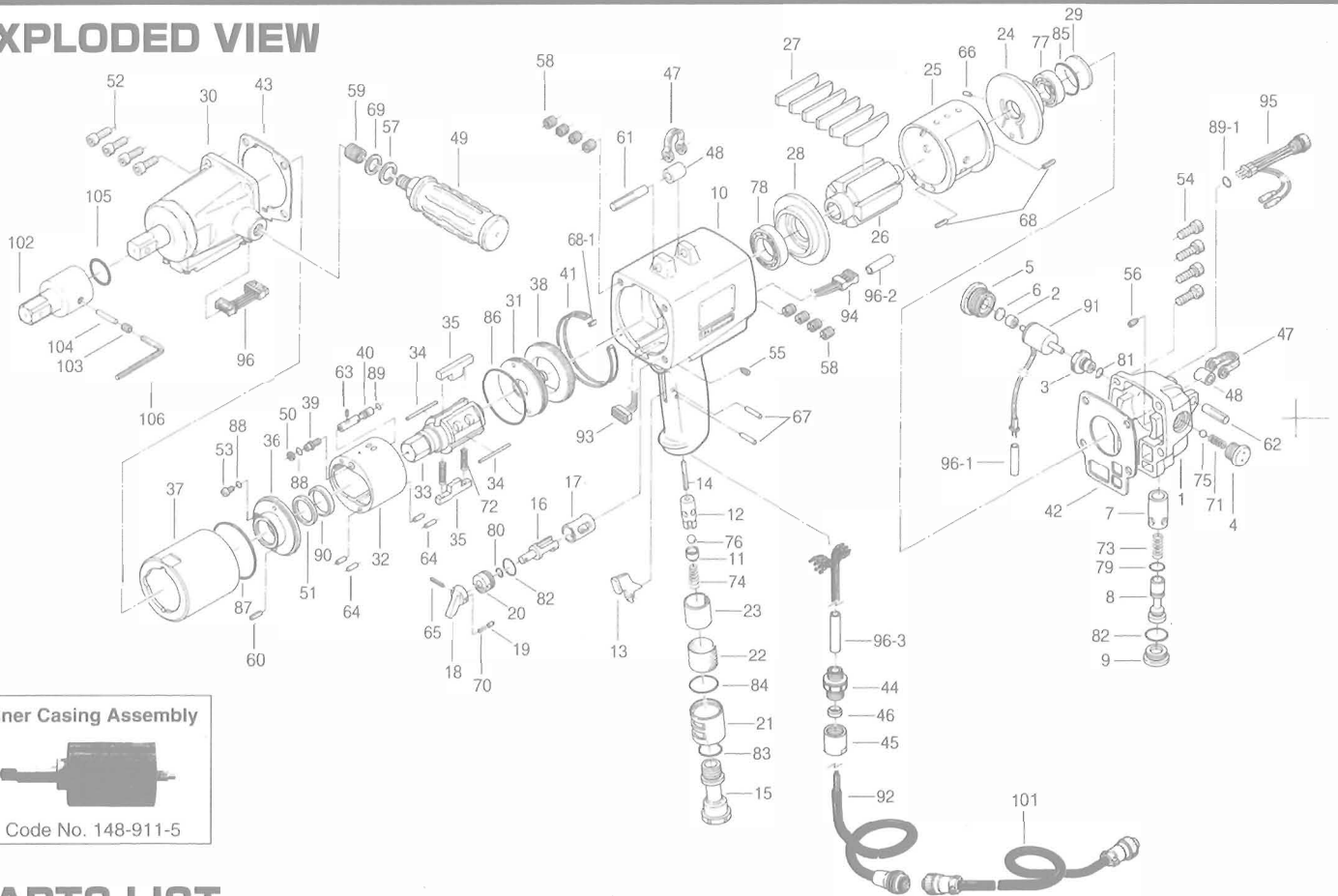


UXR-1820MC OIL-PULSE WRENCH

EXPLODED VIEW



Liner Casing Assembly

Code No. 148-911-5

PARTS LIST

Index No.	Code No.	Parts Name	Quantity	Index No.	Code No.	Parts Name	Quantity	Index No.	Code No.	Parts Name	Quantity
# 1	148-012-6	Head Cover	1	#39	175-907-9	Relief Valve Spindle	1	#76	981-208-0	Ball (5/16)	1
# 2	148-120-6	Valve Packing Spacer	1	#40	172-970-5	Relief Valve	1	#77	982-103-0	Ball Bearing (6003)	1
# 3	148-147-5	Stop Valve Bushing	1	#41	148-754-5	Clip Guide	1	#78	982-906-0	Ball Bearing (6905)	1
# 4	148-148-5	Stop Valve Cover	1	#42	148-853-5	Head Cover Packing	1	#79	990-007-0	O-Ring (P9)	1
# 5	148-149-6	Stop Valve Plug	1	#43	148-867-5	Front Casing Packing	1	#80	990-205-0	O-Ring (JW1516-5)	1
# 6	193-872-6	Valve Packing	1	#44	149-079-5	Connector	1	#81	990-906-0	O-Ring (SNS-8)	1
# 7	148-253-5	Shut-Off Valve Bushing	1	#45	149-018-5	Cap	1	#82	990-914-0	O-Ring (SNS-16)	2
# 8	173-254-3	Shut-Off Valve	1	#46	149-562-6	Stopper	1	#83	990-918-0	O-Ring (SNS-20)	1
# 9	148-927-5	Shut-Off Valve Cover	1	#47	195-790-9	Suspension Ring	2	#84	990-920-0	O-Ring (SNS-25)	1
#10	148-025-5	Handle	1	#48	173-796-3	Suspension Bushing	2	#85	990-925-0	O-Ring (SNS-32)	1
#11	188-100-1	Valve	1	#49	566-720-2	Dead Handle (A)	1	#86	990-940-0	O-Ring (SNS-53)	1
#12	063-102-3	Valve Bushing	1	#50	944-205-0	Supporting Ring (5.1×7×1)	1	#87	990-941-0	O-Ring (SNS-55)	1
#13	018-107-2	Valve Lever	1	#51	944-225-0	Supporting Ring (25.2×29.4×1.5)	1	#88	990-971-0	O-Ring (SNS-3) (NOK)	2
#14	148-104-6	Valve Rod	1	#52	945-220-0	Allen Head Bolt (M6×20)	1	#89	990-972-0	O-Ring (SNS-4) (NOK)	1
#15	148-091-5	Air Inlet Bushing	1	#53	945-942-0	Hexagon Round Head Bolt (M4×6)	1	#89-1	990-907-0	O-Ring (SNS-9)	1
#16	189-210-8	Reverse Valve	1	#54	945-964-0	Allen Head Bolt (M6×18)	4	#90	995-500-0	Teflon Seal (120)	1
#17	189-211-8	Reverse Valve Bushing	1	#55	952-108-0	Allen Head Dog Point Screw(M4×8)	1	#91	909-935-0	Solenoid Valve Assembly	1
#18	023-212-4	Reverse Valve Lever	1	#56	954-105-0	Allen Head Cone Point Screw(M4×5)	1	#92	909-937-0	Joint Cable Assembly	1
#19	054-220-1	Reverse Valve Notch	1	#57	962-013-0	Spring Washer (2-12S)	1	#93	909-918-0	Double-Row Socket (DF-12DC-2C)	1
#20	187-222-1	Reverse Valve Setter	1	#58	965-021-0	Heli-Sert(M6×1.5D)	8	#94	909-733-0	Connector (RF-06)	1
#21	163-780-3	Exhaust Bushing	1	#59	965-058-0	Heli-Sert(M12×1D)	1	#95	909-920-0	LED Lamp Assembly	1
#22	163-042-3	Silencer	1	#60	969-405-0	Pin (G)(3.5×8)	1	#96	909-997-1	Sensor Cable Connector Assy	1
#23	163-835-3	Filter	1	#61	969-480-0	Pin (C)(8×40)	1	#96-1	909-707-0	Shrink Tube(φ 6×30)	1
#24	148-285-5	Rear Plate	1	#62	969-481-0	Pin (C)(8×45)	1	#96-2	909-708-0	Shrink Tube(φ 8×30)	1
#25	195-286-9	Cylinder	1	#63	970-093-0	Pin (H)(2×6)	1	#96-3	909-738-0	Shrink Tube(φ 6×40)	1
#26	195-287-9	Rotor	1	#64	970-308-0	Pin (H)(4×8)	4				
#27	148-288-5	Blade (PC)	6	#65	973-016-0	Roll Pin (2×16)	1				
#28	195-289-9	Front Plate	1	#66	973-066-0	Roll Pin (2.5×6)	1				
#29	148-291-5	Rear Plate Spacer	1	#67	973-118-0	Roll Pin (3×18)	2				
#30	850-474-1	Sensor Casing Assembly	1	#68	973-212-0	Roll Pin (4×12)	2				
#31	195-901-9	Rear Liner Plate	1	#68-1	973-007-0	Roll Pin (2×7)	1				
#32	172-902-2	Liner	1	#69	975-127-0	Spacer (20×13×1)	1				
#33	148-319-5	Anvil	1	#70	976-025-0	Spring (3×8.5) (0.5)	1				
#34	173-974-2	Roller (3.4×45)	2	#71	976-114-0	Spring (6×18)(0.55)	1				
#35	195-440-9	Driving Blade	2	#72	976-796-0	Spring (4.3×4.8) (0.6) WPC	2				
#36	172-904-2	Front Liner plate	1	#73	976-231-0	Spring (9×27.5) (0.9)	1				
#37	195-905-9	Liner Casing	1	#74	977-180-0	Cone Spring (7.5×12×22) (0.8)	1				
#38	195-906-9	Liner Casing Setter	1	#75	981-029-0	Ball (1/4)	1				

ACCESSORIES

#97	940-125-0	Hose Nipple (NPT3/8×1/2)	1
#98	904-320-0	Extension Bar (3/4×71)(MC)	1
#99	953-306-0	Allen Head Flat Point Screw (M6×6)	1
#100	971-424-0	Pin (5×24)	1
#101	909-921-0	Sensor Cable Assy (3F5)	1
#102	904-320-0	Extension Bar (3/4×71)(MC)	1
#103	953-306-0	Allen Head Flat Point Screw (M6×6)	1
#104	971-424-0	Pin (5×24)	1
#105	990-018-1	O-Ring (SNS-20)	1
#106	939-010-0	Allen Wrench (3mm)	1

When ordering spare parts, please Specify tool type, code number and parts name.

Printed in Japan



URYU SEISAKU, LTD. Osaka, Japan

OKA-421-02-11-25-2003