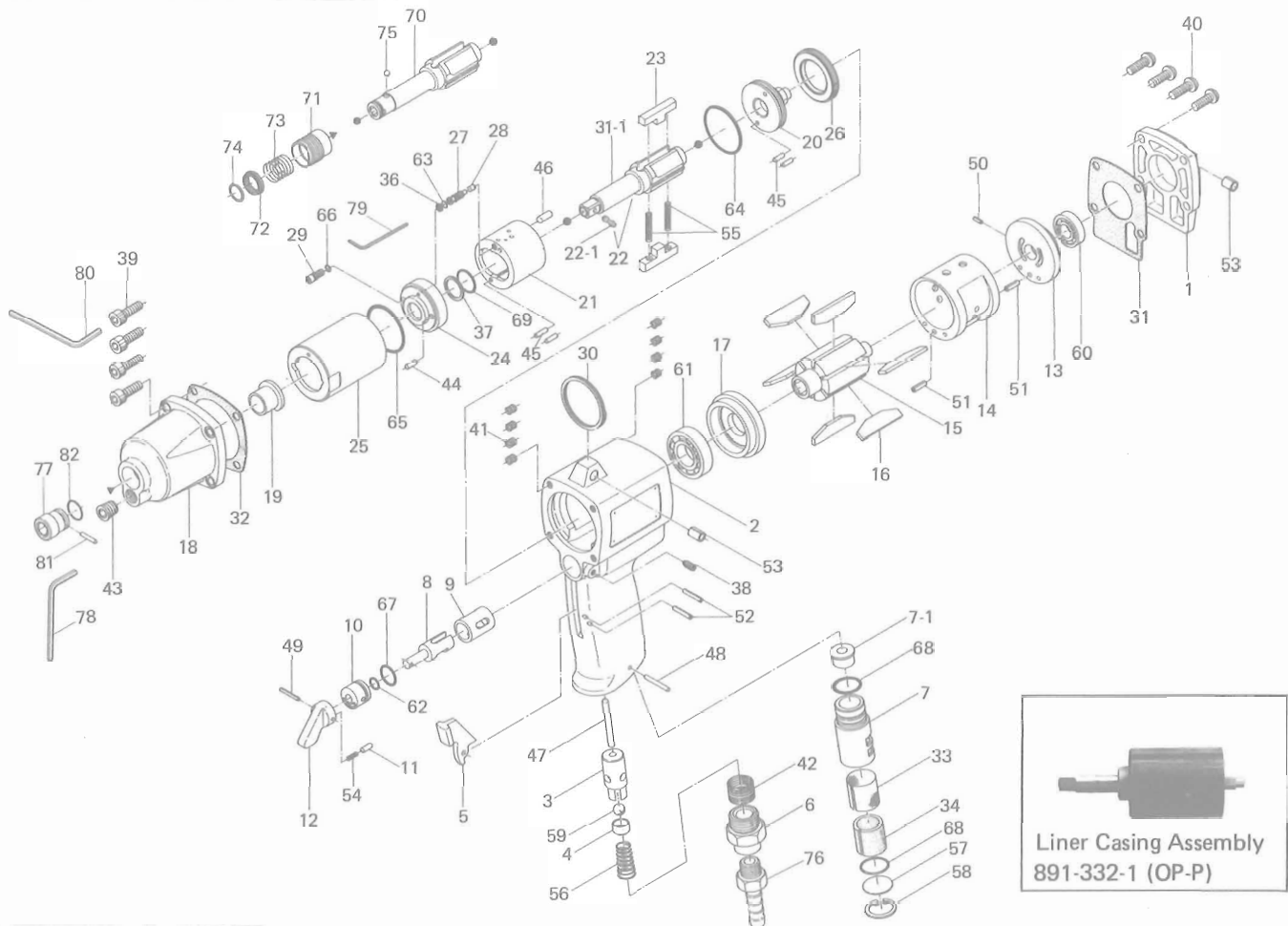


UX-700, 700D UX-WRENCHES

EXPLODED VIEW



PARTS LIST

Index No.	Parts No.	Part Name	Quantity	Index No.	Parts No.	Part Name	Quantity	Index No.	Parts No.	Part Name	Quantity
# 1	194-012-0	Head Cover	1	#32	194-867-0	Front Packing	1	#61	982-950-0	Ball Bearing (16002)	1
# 2	194-025-0	Handle	1	#33	194-042-4	Silencer	1	#62	990-203-0	O-Ring (JW1516-3)	1
# 3	063-102-3	Valve Bushing	1	#34	611-780-7	Filter	1	#63	990-320-0	O-Ring (ARP568-003)	1
# 4	185-100-1	Valve	1	#36	944-002-0	Supporting Ring (2.6x4.5x1)	1	#64	990-923-0	O-Ring (SNS-26)	1
# 5	187-107-1	Throttle Trigger	1	#37	944-214-0	Supporting Ring (12x15.9x1.5)	1	#65	990-334-0	O-Ring (JW1530-24)	1
# 6	185-091-7	Air Inlet Bushing	1	#38	952-108-0	Allen Head Dog Point Screw (M4x8)	1	#66	990-900-0	O-Ring (SNS-2)	1
# 7	194-780-4	Exhaust Stack	1	#39	945-117-0	Allen Head Bolt (M5x16)	4	#67	990-910-0	O-Ring (SNS-12.5)	1
# 7-1	190-781-6	Exhaust Stack Bushing	1	#40	945-955-0	Hex Round Head Bolt (M5x16)	4	#68	990-914-0	O-Ring (SNS-16)	2
# 8	194-210-0	Reverse Valve	1	#41	965-011-0	Heli-Sert (M5x1.5D)	8	#69	990-152-0	O-Ring (P-12) (NTN)	1
# 9	194-211-0	Reverse Valve Bushing	1	#42	965-073-0	Heli-Sert (UNF5/8xN6)	1	Special Parts for UX-700D			
# 10	194-222-0	Reverse Valve Setter	1	#43	966-100-0	Allen Head Plug (PT1/8)	1	#70	195-350-1	Driver Anvil	1
# 11	054-220-1	Reverse Lever Notch	1	#44	969-449-0	Pin (G) (3x6)	1	#71	011-351-1	Bit Sleeve	1
# 12	194-212-0	Reverse Lever	1	#45	970-204-0	Pin (H) (3x6)	4	#72	011-352-1	Bit Spacer	1
# 13	194-285-0	Rear Plate	1	#46	970-310-0	Pin (H) (4x10)	1	#73	976-327-0	Spring (13.5x11)	1
# 14	194-286-0	Cylinder	1	#47	970-337-0	Pin (H) (4x36)	1	#74	978-117-0	Snap Ring (11.7x1.0)	1
# 15	194-287-0	Rotor	1	#48	971-163-0	Pin (2.5x23)	1	#75	981-002-0	Ball (1/8)	1
# 16	174-288-4	Blade (PC)	6	#49	973-047-0	Roll Pin (1.5x14)	1	Accessories			
# 17	194-289-0	Front Plate	1	#50	973-066-0	Roll Pin (2.5x6)	1	#76	940-114-0	Air Hose Nipple (NPT1/4x3/8)	1
# 18	194-439-0	Front Casing	1	#51	973-110-0	Roll Pin (3x10)	2	#77	900-056-0	Hexagon Socket 3/8SQ (13x25)	1
# 19	190-328-6	Anvil Bushing	1	#52	973-114-0	Roll Pin (3x14)	2	#78	939-104-0	Allen Wrench (5)	1
# 20	194-901-0	Rear Liner Plate	1	#53	973-340-0	Roll Pin (6x10)	2	#79	939-091-0	Allen Wrench (1.5) (55x55)	1
# 21	194-902-1	Liner	1	#54	976-025-0	Spring (3x8.5)	1	#80	939-105-0	Allen Wrench (4)	1
# 22	891-309-1	Anvil (OP-P) Assy.	1	#55	976-793-0	Spring (3.7x29) WPC	2	#81	971-990-0	Pin (3x16.5)	1
# 22-1	891-300-1	Socket Retainer Pin Assy	1	#56	977-175-0	Cone Spring (7.5x10.3x22)	1	#82	990-290-0	O-Ring (JW12)	1
# 23	194-440-0	Driving Blade	2	#57	975-598-0	Round Plate (18x1)	1				
# 24	194-904-0	Front Liner Plate	1	#58	979-318-0	Inner Snap Ring (IRTW-18)	1				
# 25	194-905-0	Liner Casing	1	#59	981-208-0	Ball (5/16)	1				
# 26	194-906-0	Liner Casing Setter	1	#60	982-402-0	Ball Bearing (EE-3)	1				
# 27	194-907-0	Relief Valve Spindle	1								
# 28	194-970-1	Relief Valve	1								
# 29	194-742-0	Oil Plug	1								
# 30	004-790-2	Suspension Ring	1								
# 31	194-853-0	Rear Packing	1								
#31-1	194-319-0	Anvil (O)	1								

When ordering spare parts, please specify tool type, code number and part name.

Printed in Japan



URYU SEISAKU, LTD. Osaka, Japan

OKA-317-02-08-10-2008