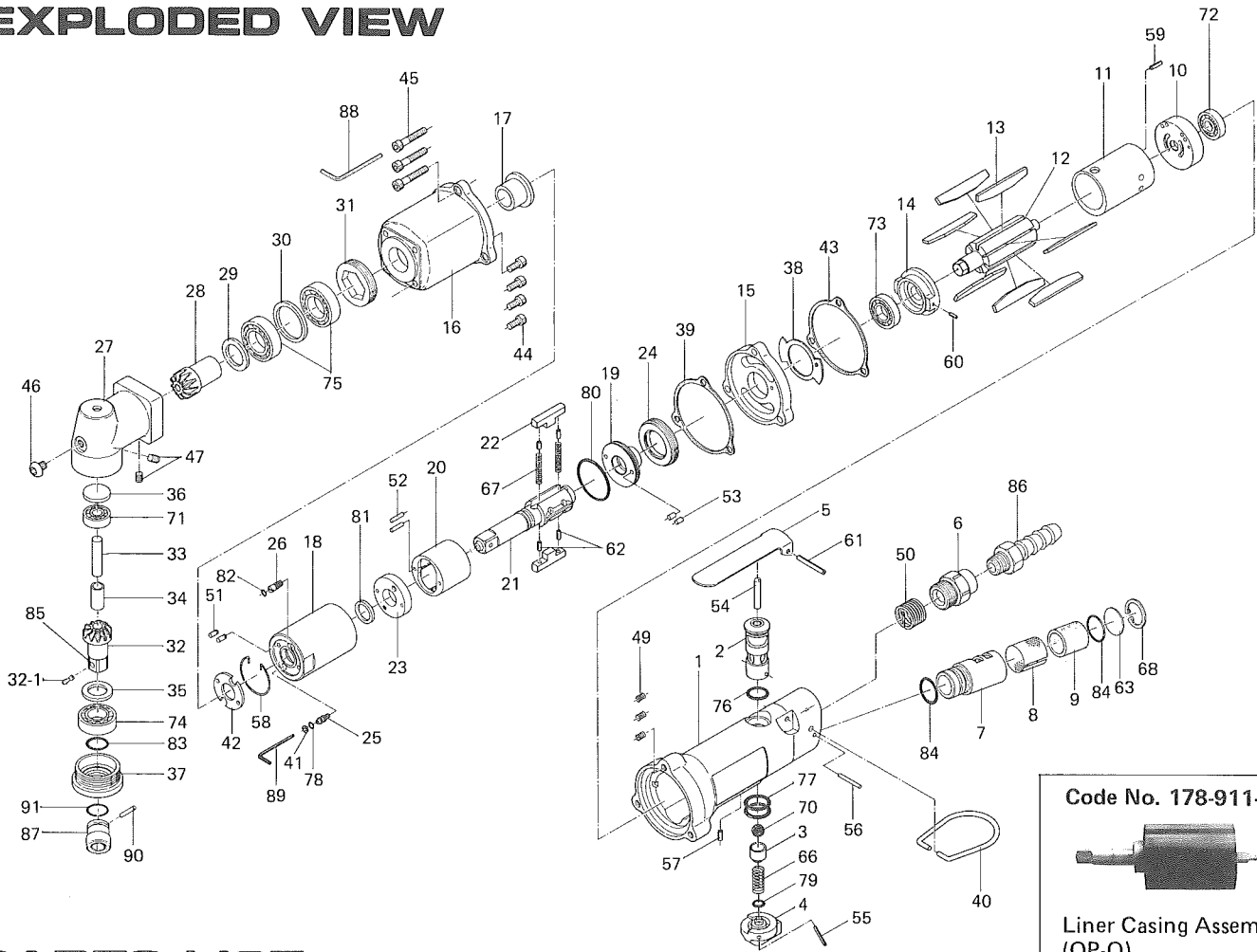
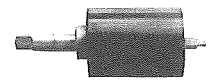


UX-612C UX-WRENCH

EXPLODED VIEW



Code No. 178-911-8



Liner Casing Assembly (OP-O)

PARTS LIST

Index No.	Parts No.	Parts Name	Quantity	Index No.	Parts No.	Parts Name	Quantity	Index No.	Parts No.	Parts Name	Quantity
# 1	179-025-3	Handle	1	#33	008-431-1	Driven Gear Spindle	1	#64	975-806-0	Adjusting Spacer (24x20xt)	1
# 2	180-210-2	Reverse Valve	1	#34	008-432-1	Driven Gear Spindle	1	#65	975-807-0	Adjusting Spacer (28x25xt)	1
# 3	180-100-2	Valve	1	#35	008-433-1	Driven Gear Spacer	1	#66	976-147-0	Spring (7x12)	1
# 4	180-212-2	Reverse Lever	1	#36	179-391-5	Spindle Upper Plate	1	#67	976-238-0	Spring (3.3x21)	2
# 5	500-107-1	Valve Lever	1	#37	179-488-3	Angle Casing Cover	1	#68	979-011-0	Inner Snap Ring (18)	1
# 6	180-091-6	Air Inlet Bushing	1	#38	179-856-3	Separator Packing	1	#69	981-225-0	Ball (2.5mm)	1
# 7	194-780-4	Exhaust Stack	1	#39	196-867-1	Front Casing Packing	2	#70	981-208-0	Ball (5/16)	1
# 8	194-042-4	Silencer	1	#40	010-790-1	Suspension Ring	1	#71	982-013-0	Ball Bearing (606)	1
# 9	499-780-7	Filter	1	#41	944-002-0	Supporter Ring (2.6x4.5x1)	1	#72	982-401-0	Ball Bearing (EE-2)	1
#10	180-285-2	Rear Plate	1	#42	178-327-8	Anvil Front Spacer	1	#73	982-402-0	Ball Bearing (EE-3)	1
#11	180-286-2	Cylinder	1	#43	179-854-3	Handle Packing	1	#74	982-902-0	Ball Bearing (6901)	1
#12	196-287-4	Rotor	1	#44	945-010-0	Allen Head Bolt (M4x10)	4	#75	982-903-0	Ball Bearing (6902)	2
#13	196-288-4	Blade	7	#45	945-020-0	Allen Head Bolt (M4x20)	3	#76	990-008-0	O-Ring (P10)	1
#14	177-289-9	Front Plate	1	#46	945-949-0	Allen Head Round Bolt (M5x6)	1	#77	990-014-0	O-Ring (P14)	2
#15	179-027-3	Separator	1	#47	954-105-0	Allen Head Cone Point Screw (M4x5)	2	#78	990-320-0	O-Ring (ARP568-003)	1
#16	179-439-3	Front Casing	1	#49	965-006-0	Heli-Sert (M4x1.5D)	3	#79	990-322-0	O-Ring (ARP568-107)	1
#17	185-328-2	Anvil Bushing	1	#50	965-071-0	Heli-Sert (UNF5/8x1D)	1	#80	990-329-0	O-Ring (JW1530-19)	1
#18	178-905-8	Liner Casing	1	#51	969-449-0	Pin (G) (3x6)	2	#81	995-512-0	Teflon Seal (P12)	1
#19	196-901-4	Rear Liner Plate	1	#52	970-135-0	Pin (H) (2.45x11)	2	#82	990-900-0	O-Ring (SNS-2)	1
#20	190-902-6	Liner	1	#53	970-130-0	Pin (H) (2.45x4.5)	2	#83	990-910-0	O-Ring (SNS-12.5)	1
#21	178-319-8	Anvil (OP-O)	1	#54	970-326-0	Pin (H) (4x25)	1	#84	990-914-0	O-Ring (SNS-16)	2
#22	190-440-6	Driving Blade	2	#55	971-122-0	Pin (2x22)	1	#85	008-430-1	Driven Gear (OP-O)	1
#23	178-904-8	Front Liner Plate	1	#56	971-163-0	Pin (2.5x23)	1	Accessories			
#24	190-906-6	Liner Casing Setter	1	#57	973-005-0	Roll Pin (2x5)	1	#86	940-114-0	Air Hose Nipple (NPT1/4x3/8)	1
#25	190-907-6	Relief Valve Spindle	1	#58	978-277-0	Snap Ring (28x1.0)	1	#87	900-028-0	Hexagon Socket (3/8SQ 10x19)	1
#26	178-742-9	Oil Plug	1	#59	973-008-0	Roll Pin (2x8)	1	#88	939-010-0	Allen Wrench (3mm)	1
#27	179-441-3	Angle Casing	1	#60	973-018-0	Roll Pin (2x18)	1	#89	939-090-0	Allen Wrench (1.5mm) (5x55)	1
#28	179-420-3	Driving Gear	1	#61	973-124-0	Roll Pin (3x24)	1	#90	971-990-0	Pin (3x16.5)	1
#29	179-425-3	Driving Gear Spacer	1	#62	973-390-0	Roll Pin (2x5)	4	#91	990-290-0	O-Ring (JW12)	1
#30	179-423-3	Driving Gear Bushing	1	#63	975-598-0	Spacer (18x1)	1				
#31	179-422-3	Driving Gear Bushing Screw	1								
#32	891-345-1	Driven Gear (OP-P)	1								
#32-1	891-300-1	Socket Retainer Pin Assy	1								

When ordering spare parts, please specify tool type, code number and part name.

Printed in Japan

URYU SEISAKU, LTD. Osaka, Japan