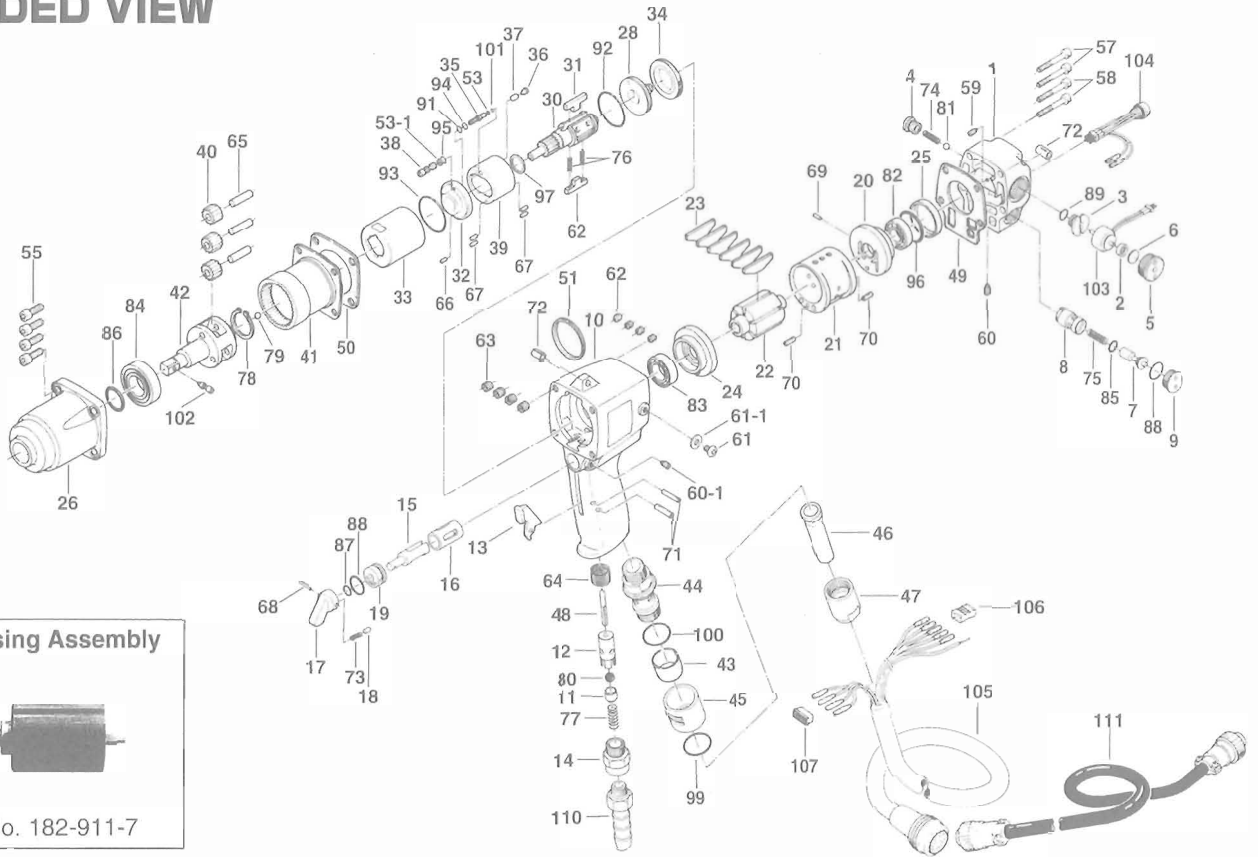


UX-120EC OIL-PULSE WRENCH

EXPLODED VIEW



Liner Casing Assembly



Code. No. 182-911-7

PARTS LIST

Index No.	Code No.	Parts Name	Quantity	Index No.	Code No.	Parts Name	Quantity	Index No.	Code No.	Parts Name	Quantity
# 1	182-012-7	Head Cover	1	#38	194-742-3	Oil Plug	1	#74	976-241-0	Spring (4.3×18)	1
# 2	193-120-6	Valve Packing Spacer	1	#40	182-470-7	Planet Gear	3	#75	976-143-0	Spring (7×18.5)	1
# 3	193-147-6	Stop Valve Bushing	1	#41	182-465-7	Internal Gear With Strain gauges	1	#76	976-794-0	Spring (3.8×33) WPC	2
# 4	193-148-6	Stop Valve Cover	1	#42	891-341-1	Socket Spindle Assy. (P)	1	#77	977-175-0	Cone Spring (7.5×10.3×22)	1
# 5	193-149-6	Stop Valve Plug	1	#43	193-099-7	Filter	1	#78	979-122-0	Outer Snap Ring (25)	1
# 6	193-872-6	Valve Packing	1	#44	193-780-6	Silencer	1	#79	981-006-0	Ball (1/4)	1
# 7	175-254-9	Shut-Off Valve	1	#45	193-782-6	Silencer Cover	1	#80	981-208-0	Ball (5/16)	1
# 8	182-253-7	Shut-Off Valve Bushing	1	#46	182-562-8	Stopper	1	#81	981-024-0	Polyurethane Ball (5)	1
# 9	195-927-2	Shut-Off Valve Cover	1	#47	182-018-8	Cap	1	#82	982-404-0	Ball Bearing (EE-5)	1
#10	182-025-6	Casing	1	#48	193-104-6	Valve Rod	1	#83	982-905-0	Ball Bearing (6904)	1
#11	188-100-1	Valve	1	#49	182-853-7	Head Cover Packing	1	#84	982-204-0	Ball Bearing (6204)	1
#12	063-102-3	Valve Bushing	1	#50	194-867-6	Front Casing Packing	1	#85	990-006-0	O-Ring (P8)	1
#13	187-107-1	Throttle Trigger	1	#51	004-790-2	Suspension Ring	1	#86	990-018-0	O-Ring (P20)	1
#14	185-091-7	Air Inlet Bushing	1	#53	944-002-0	Back-up Ring (2.6×4.5×1)	2	#87	990-205-0	O-Ring (JW1516-5)	1
#15	199-210-1	Reverse Valve	1	#53-1	944-003-0	Back-up Ring (3.0×5.0×1.0)	1	#88	990-914-0	O-Ring (SNS-16)	4
#16	199-211-1	Reverse Valve Bushing	1	#54	944-215-0	Back-up Ring (16×19.9×1.5)	1	#89	990-905-0	O-Ring (SNS-7)	1
#17	023-212-4	Reverse Lever	1	#55	945-224-0	Allen Head Bolt (M6×24)	4	#91	990-973-0	O-Ring (SNS-5) (NOK)	1
#18	054-220-1	Reverse Lever Notch	1	#57	945-114-0	Allen Head Bolt (M5×14)	2	#92	990-607-0	O-Ring (34×2.3)	1
#19	187-222-1	Reverse Valve Setter	1	#58	945-135-0	Allen Head Bolt (M5×35)	2	#93	990-338-0	O-Ring (JW1530-28)	1
#20	194-285-6	Rear Plate	1	#59	952-105-0	Allen Head Dog Point Screw (M4×5)	1	#94	990-900-0	O-Ring (SNS-2)	1
#21	063-286-7	Cylinder	1	#60	954-005-0	Allen Head Cone Point Screw (M3×5)	1	#95	990-970-0	O-Ring (SNS-2) (NOK)	1
#22	194-287-6	Rotor	1	#60-1	952-108-0	Allen Head Dog Point Screw (M4×8)	1	#96	990-929-0	O-Ring (SNS-36)	1
#23	182-288-9	Blade (PC)	6	#61	945-949-0	Hexagon Round Head Bolt (M5×6)	2	#97	995-516-0	Teflon Seal (P16GC)	1
#24	194-289-6	Front Plate	1	#61-1	961-012-0	Flat Washer (5)	2	#99	990-919-0	O-Ring (SNS-22)	1
#25	182-291-7	Rear Plate Spacer	1	#62	965-011-0	Heli-Sert (M5×1.5D)	4	#100	990-921-0	O-Ring (SNS-22.4)	1
#26	182-439-7	Front Casing	1	#63	965-021-0	Heli-Sert (M6×1.5D)	4	#101	990-320-0	O-Ring (ARP568-003)	1
#28	182-901-7	Rear Liner Plate	1	#64	965-073-0	Heli-Sert (UNF5/8) (N6)	1	#102	891-304-1	Socket Retainer Pin Assembly	1
#29	194-902-3	Liner	1	#65	972-264-0	Roller Pin (7×24.5)	3	#103	909-756-0	Solenoid Valve Assembly	1
#30	182-319-7	Anvil	1	#66	969-450-0	Pin (G)(3×8)	1	#104	909-778-0	LED Lump Assembly	1
#31	194-440-3	Driving Blade	2	#67	970-206-0	Pin (H)(3×8)	4	#105	909-758-0	Joint Cable Assembly	1
#32	194-904-3	Front Liner Plate	1	#68	973-016-0	Roll Pin(2×16)	1	#106	909-731-0	Connector (171822-4)	1
#33	194-905-3	Liner Cashing	1	#69	973-066-0	Roll Pin(2.5×6)	1	#107	909-733-0	Connector (RF-06)	1
#34	194-906-3	Liner Cashing Cover	1	#70	973-212-0	Roll Pin(4×12)	2	ACCESSORIES			
#35	194-907-3	Relief Valve Spindle	1	#71	973-116-0	Roll Pin(3×16)	2	#110	940-114-0	Air Hose Nipple(NPT1/4×3/8)	1
#36	194-969-2	Relief Valve Plug	1	#72	973-340-0	Roll Pin(6×10)	2	#111	909-752-0	Sensor Cable Assy (3E5)	1
#37	194-970-2	Relief Valve	1	#73	976-025-0	Spring(3×8.5)	1				

When ordering spare parts, please Specify tool type, code number and parts name.

Printed in Japan



URYU SEISAKU, LTD. Osaka, Japan

OKA-387-02-11-25-2003