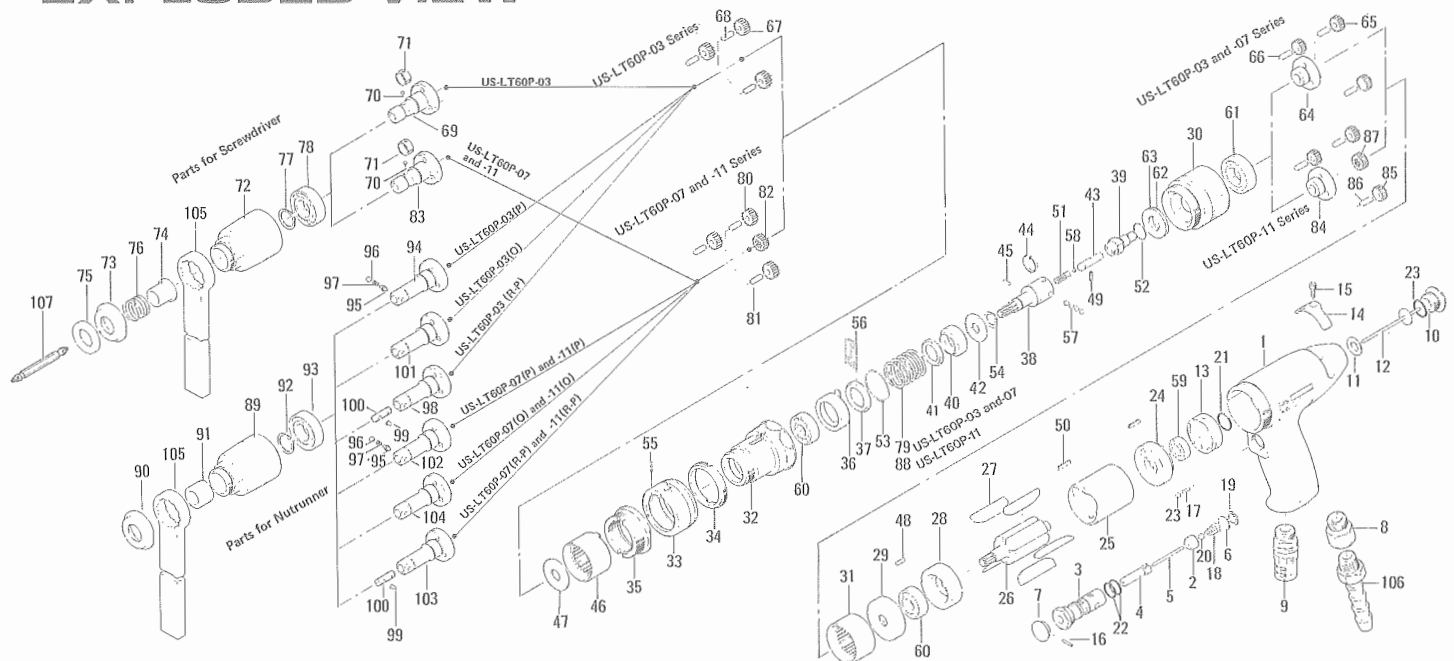


US-LT60P SERIES SCREWDRIVERS

EXPLODED VIEW



PARTS LIST

Index No.	Code No.	Parts Name	Quantity	Index No.	Code No.	Parts Name	Quantity	Index No.	Code No.	Parts Name	Quantity
COMMON PARTS								PARTS FOR US-LT60P-11			
499-004-7 HANDLE ASSEMBLY				#49	973-003-0	Roll Pin (1.5×8)	1	#84	499-480-0	Gear Cage	1
#1	499-025-8	Handle	1	#50	973-112-0	Roll Pin (3×12)	2	#85	499-470-0	First Planet Gear	3
#2	621-100-0	Valve	1	#51	976-139-0	Spring (4.5×18)	1	#86	972-111-0	Needle Roller (4×11)	3
#3	499-101-7	Valve Bushing	1	#52	978-150-0	Snap Ring (15×1)	1	#87	499-445-0	First Middle Gear	1
#4	499-103-8	Valve Rod Bushing	1	#53	978-289-0	Snap Ring (29×1)	1	#80	499-471-3	Second Planet Gear	3
#5	969-412-0	Pin (G) (2×12)	1	#54	979-107-0	Outer Snap Ring (10)	1	#81	972-111-0	Needle Roller (4×11)	3
#6	621-164-0	Spring Spacer	1	#55	981-000-0	Ball (1/16)	3	#82	499-445-3	Second Middle Gear	1
#7	603-107-2	Throttle Trigger	1	#56	981-000-0	Ball (1/16)	49	#83	499-350-3	Driver Anvil	1
#8	191-091-5	Air Inlet Bushing	1	#57	981-003-0	Ball (5/32)	4	#70	981-002-0	Ball (1/8)	1
#9	499-885-7	Silencer	1	#58	981-004-0	Ball (3/16)	1	#71	471-356-7	Bit Band	1
#10	499-108-7	Valve Plug	1	#59	982-035-0	Ball Bearing (698)	1	#72	499-029-7	Gear Casing	1
#11	996-421-0	Packing (16×8×1)	1	#60	982-100-0	Ball Bearing (6000)	2	#73	499-057-7	Bit Casing	1
#12	499-106-7	Operation Rod with Cap	1	#61	982-102-0	Ball Bearing (6002)	1	#74	472-351-7	Bit Sleeve	1
#13	499-210-7	Reverse Valve	1	#62	988-837-0	T/B Bearing (NTB 1226)	1	#75	444-567-4	Bit Casing Spacer	1
#14	496-212-2	Reverse Lever	1	#63	988-962-0	Thrust Washer (AS 1226)	1	#76	976-450-0	Spring (18.5×10)	1
#15	945-001-0	Allen Head (M3×10)	1	PARTS FOR US-LT60P-03				#77	979-112-0	Outer Snap Ring (15)	1
#16	973-010-0	Roll Pin (2×10)	1	#64	499-480-7	Gear Cage	1	#78	982-102-0	Ball Bearing (6002)	1
#17	976-033-0	Spring (3.6×7)	1	#65	499-470-7	First Planet Gear	3	#88	976-585-0	Spring (25×21)	1
#18	976-942-0	Spring (7.5×12)	1	#66	972-111-0	Needle Roller (4×11)	3	PARTS FOR NUTRUNNER			
#19	979-005-0	Inner Snap Ring (12)	1	#67	499-471-7	Second Planet Gear	3	COMMON PARTS			
#20	981-003-0	Ball (5/32)	2	#68	972-111-0	Needle Roller (4×11)	3	#89	499-029-7	Gear Casing	1
#21	990-011-0	O Ring (P12)	1	#69	499-350-6	Driver Anvil	1	#90	499-057-7	Bit Casing	1
#22	990-909-0	O Ring (SNS 11.2)	2	#70	981-002-0	Ball (1/8)	1	#91	499-328-7	Anvil Bushing	1
#23	990-912-0	O Ring (SNS 14)	1	#71	471-356-7	Bit Band	1	#92	979-112-0	Outer Snap Ring (15)	1
#24	499-285-7	Rear Plate	1	#72	499-029-7	Gear Casing	1	#93	982-102-0	Ball Bearing (6002)	1
#25	499-286-7	Cylinder	1	#73	499-057-7	Bit Casing	1	For US-LT60P-03 series			
#26	499-287-7	Rotor	1	#74	472-351-7	Bit Sleeve	1	#94	499-319-8	* Anvil (P)	1
#27	609-288-1	Blade	5	#75	444-567-4	Bit Casing Spacer	1	#95	135-800-1	Socket Retainer Pin	1
#28	499-289-7	Front Plate	1	#76	976-450-0	Spring (18.5×10)	1	#96	971-202-0	Pin (3×2)	1
#29	499-296-7	Front Plate Spacer	1	#77	979-112-0	Outer Snap Ring (15)	1	#97	976-018-0	Spring (2.8×8.5)	1
#30	499-036-7	Hammer Casing Connector	1	#78	982-102-0	Ball Bearing (6002)	1	#98	893-050-0	* Anvil (R-P)	1
#31	499-465-7	First Internal Gear	1	#79	976-586-0	Spring (25×21)	1	#99	891-105-1	Socket Retainer Pin (R-P)	1
#32	499-028-7	Hammer Casing	1	PARTS FOR US-LT60P-07				#100	891-106-1	Socket Pin Rubber (R-P)	1
#33	499-264-0	Regulating Dial	1	#64	499-480-7	Gear Cage	1	#101	499-319-7	* Anvil (O)	1
#34	499-257-7	Regulating Screw	1	#65	499-470-7	First Planet Gear	3	For US-LT60P-07 and 11 series			
#35	499-382-7	Hammer Casing Nut	1	#66	972-111-0	Needle Roller (4×11)	3	#102	499-319-5	* Anvil (P)	1
#36	499-164-7	Spring Setter	1	#80	499-471-3	Second Planet Gear	3	#95	135-800-1	Socket Retainer Pin	1
#37	499-379-7	Retainer	1	#81	972-111-0	Needle Roller (4×11)	3	#96	971-202-0	Pin (3×2)	1
#38	499-452-7	Cam Guide	1	#82	499-445-3	Second Middle Gear	1	#97	976-018-0	Spring (2.8×8.5)	1
#39	499-346-7	Cam	1	#83	499-350-3	Driver Anvil	1	#103	893-051-1	* Anvil (R-P)	1
#40	499-375-8	Cam Ring	1	#70	981-002-0	Ball (1/8)	1	#99	891-105-1	Socket Retainer Pin (R-P)	1
#41	499-165-7	Spring Holder	1	#71	471-356-7	Bit Band	1	#100	891-106-1	Socket Pin Rubber (R-P)	1
#42	499-682-7	Cushion Rubber	1	#72	499-029-7	Gear Casing	1	#104	499-319-4	* Anvil (O)	1
#43	471-318-7	Pilot Pin	1	#73	499-057-7	Bit Casing	1	ACCESSORIES			
#44	499-670-7	Cam Guide Band	1	#74	472-351-7	Bit Sleeve	1	#105	499-516-7	Reaction Bar	1
#45	499-764-7	Notch Pin	1	#75	444-567-4	Bit Casing Spacer	1	#106	940-114-0	A/H Nipple (NPT1/4×3/8)	1
#46	499-466-7	Second Internal Gear	1	#76	976-450-0	Spring (18.5×10)	1	#107	916-810-0	(+) Double Bit No.2×7.5	1
#47	499-483-7	Gear Cage Spacer	1	#77	979-112-0	Outer Snap Ring (15)	1				
#48	971-110-0	Pin (2×10)	1	#78	982-102-0	Ball Bearing (6002)	1				
				#79	976-586-0	Spring (25×21)	1				

When ordering spare parts, please specify tool type, code number and parts name.

Printed in Japan

URYU SEISAKU, LTD. Osaka, Japan