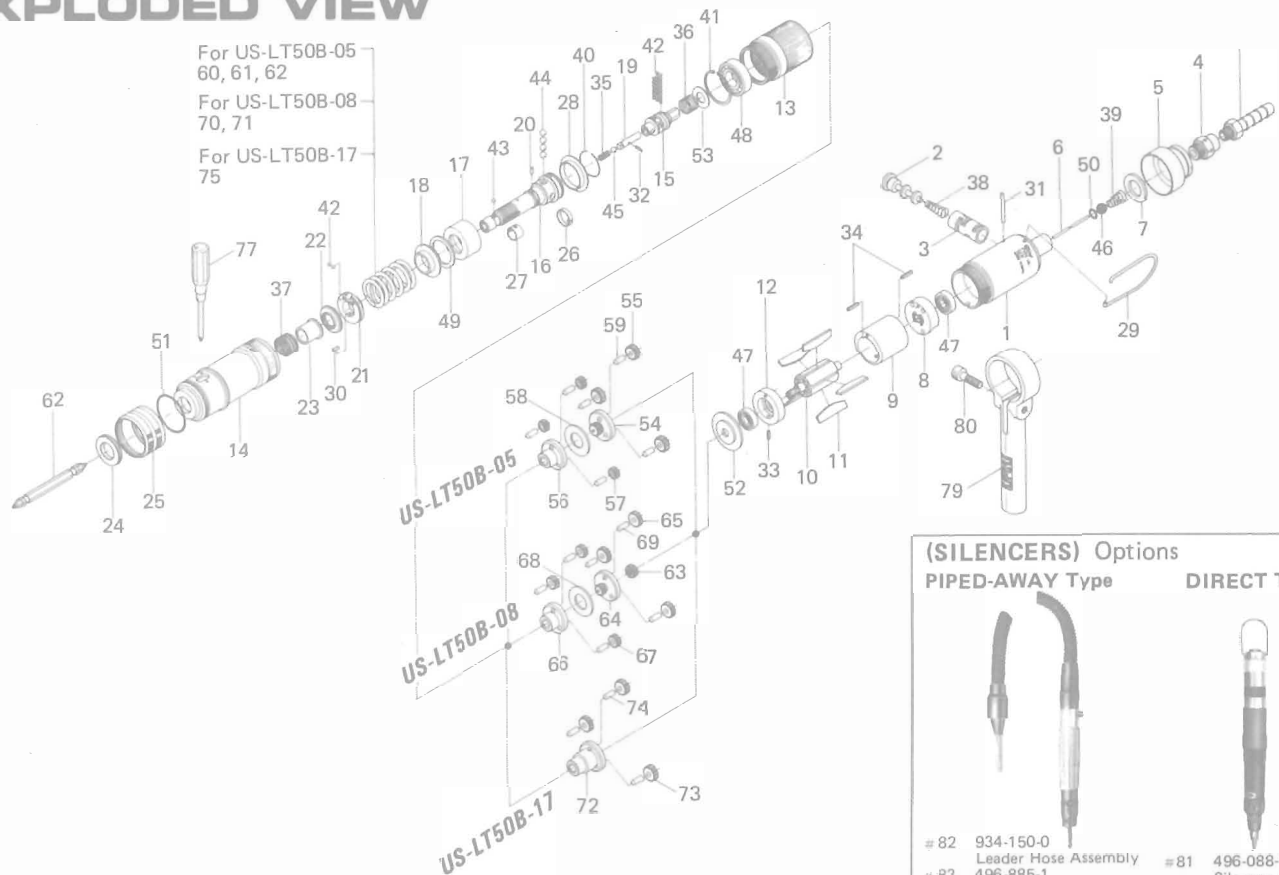


US-LT50B SERIES SCREW DRIVERS

EXPLODED VIEW



(SILENCERS) Options

PIPED-AWAY Type **DIRECT Type**

82 934-150-0 Leader Hose Assembly
83 496-885-1 Exhaust Hose Assembly

81 496-088-1 Silencer Assembly

PARTS LIST

Index No.	Code No.	Part Name	Q'ty	Index No.	Code No.	Part Name	Q'ty	Index No.	Code No.	Part Name	Q'ty
US-LT50 series											
Common parts											
# 1	444-025-4	Casing	1	# 32	969-470-0	Pin (2x8)	1	Parts for US-LT50B-08			
# 2	893-058-1	Reverse Valve	1	# 33	973-007-0	Roll Pin (2 x7)	1	# 63	444-460-3	Rotor Gear	1
# 3	444-211-4	Reverse Valve Bushing	1	# 34	973-072-0	Roll Pin (2.5x12)	2	# 64	444-480-3	First Gear Cage	1
# 4	480-091-8	Air Inlet Bushing	1	# 35	976-058-0	Spring (4.5x11)	1	# 65	444-471-4	First Planer Gear	3
# 5	444-782-4	Exhaust Deflector	1	# 36	976-332-0	Spring (13.5x10)	1	# 66	444-485-3	Second Gear Case	1
# 6	444-104-4	Valve Rod	1	# 37	976-450-0	Spring (18.5x10)	1	# 67	444-471-3	Second Planet Gear	3
# 7	472-835-7	Filter	1	# 38	977-103-0	Cone Spring (6x9.5x16)	1	# 68	444-483-4	Gear Cage Spacer	1
# 8	444-285-4	Rear Plate	1	# 39	977-157-0	Cone Spring (7x11x20)	1	# 69	972-110-0	Needle Roller (4x10)	6
# 9	444-286-4	Cylinder	1	# 40	978-229-0	Snap Ring (23x1)	1	# 70	976-614-0	Spring (Standard: 27x38)	1
# 10	444-287-4	Rotor	1	# 41	979-025-0	Inner Snap Ring (32)	1	# 71	976-588-0	Spring (Weaker: 25x38)	1
# 11	444-288-6	Blade (PC)	5	# 42	981-001-0	Ball (3/32)	24	Parts for US-LT50B-17			
# 12	444-289-4	Front Plate	1	# 43	981-002-0	Ball (1/8)	1	# 72	444-480-2	Gear Cage	1
# 13	444-029-4	Gear Casing	1	# 44	981-004-0	Ball (3/16)	1	# 73	444-470-4	First Planet Gear	3
# 14	444-369-4	Clutch Casing	1	# 45	981-005-0	Ball (7/32)	4	# 74	972-110-0	Needle Roller (4x10)	3
# 15	444-346-3	Cam	1	# 46	981-208-0	Ball (5/16)	1	# 75	976-588-0	Spring (Standard: 25x38)	1
# 16	444-319-4	Anvil	1	# 47	982-066-0	Ball Bearing (607ZZ)	2	Accessories			
# 17	444-375-3	Cam Ring	1	# 48	982-102-0	Ball Bearing (6002)	1	# 76	916-810-0	(+) Double Bit (No.2x75)	1
# 18	444-379-3	Retainer	1	# 49	944-023-0	Supporting Ring (P-22A)	1	# 77	939-402-0	Torque Adjusting Driver (No.2)	1
# 19	471-318-5	Pilot Pin	1	# 50	990-005-0	O Ring (P-7)	1	# 78	940-114-0	Air Hose Nipple	1
# 20	444-764-4	Notch Pin	1	# 51	990-935-0	O Ring (SNS-31.5)	1	Optional accessories			
# 21	444-562-4	Spring Holder	1	# 52	444-807-4	Spacer	1	# 79	444-516-4	Reaction Bar	1
# 22	472-257-8	Regulating Screw	1	# 53	975-109-0	Spacer (20x 9.5x1.5)	1	# 80	945-222-0	Allen Head Bolt (M6x22)	1
# 23	472-351-7	Bit Sleeve	1	Parts for US-LT50B-05				For Direct Type Silencer			
# 24	444-567-4	Bushing	1	# 54	444-480-4	First Gear Cage	1	# 81	496-088-1	Silencer Assembly	1
# 25	444-370-4	Clutch Casing Sleeve	1	# 55	444-470-4	First Planer Gear	3	For Piped-away Type			
# 26	444-670-4	Band	1	# 56	444-485-4	Second Gear Cage	1	# 82	934-150-0	Leader Hose Assembly	1
# 27	471-356-7	Bit Band	1	# 57	444-471-4	Second Planet Gear	3	# 83	496-885-1	Exhaust House Assembly	1
# 28	444-334-8	Anvil Spacer	1	# 58	444-483-4	Gear Cage Spacer	1				
# 29	191-790-1	Suspension Ring	1	# 59	972-110-0	Needle Roller (4x10)	6				
# 30	970-092-0	Pin (H) (2x5.5)	1	# 60	976-620-0	Spring (Standard: 27.5x38)	1				
# 31	970-226-0	Pin (H) (3x26)	1	# 61	976-614-0	Spring (Weaker: 27x38)	1				
				# 62	976-588-0	Spring (Weakest: 25x38)	1				

When ordering spare parts, please specify tool type, code number and parts name.

Printed in Japan



URYU SEISAKU, LTD. Osaka, Japan

OKA-253-01-01-20-2008