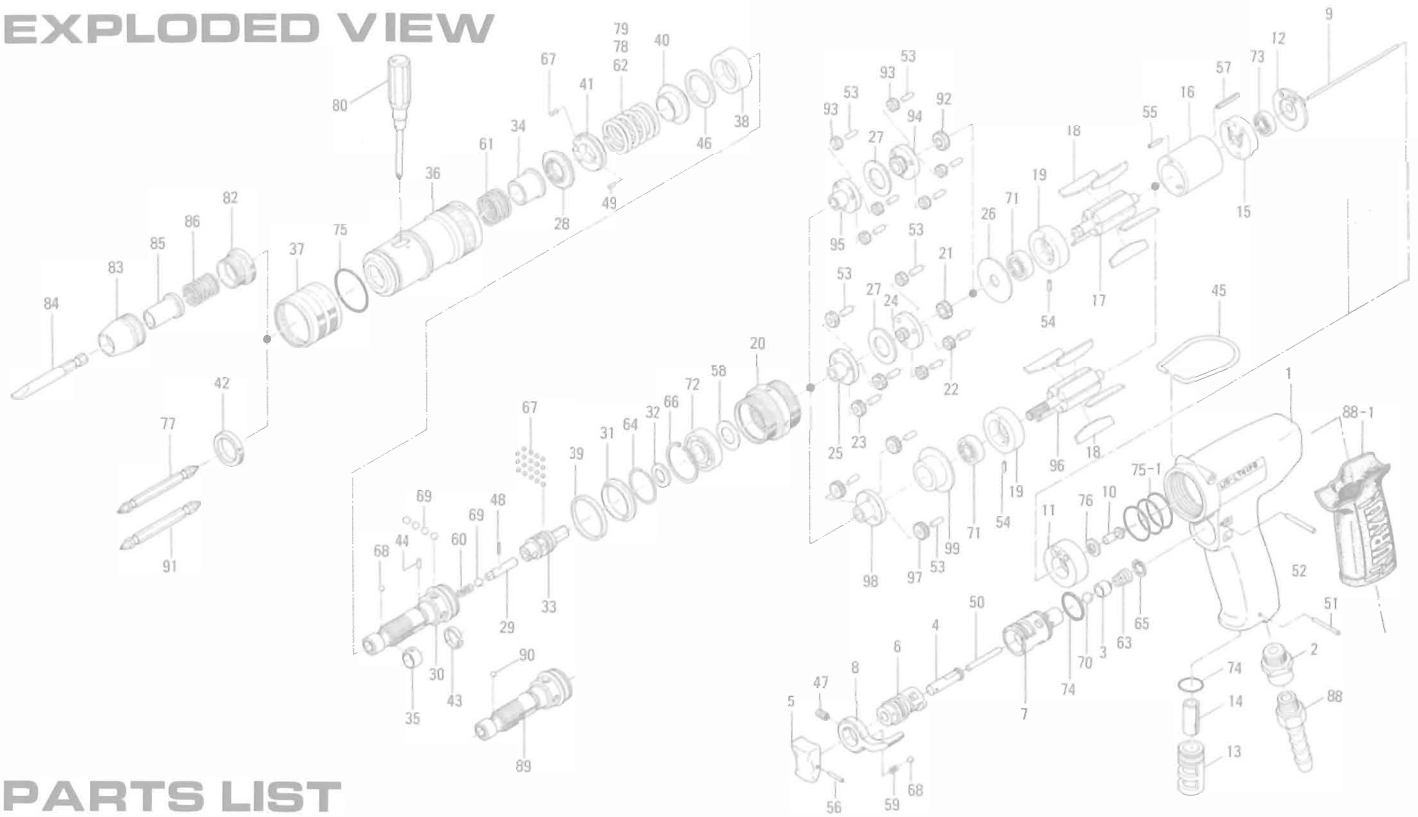


US-LT41P SERIES SCREW DRIVERS

EXPLODED VIEW



PARTS LIST

Index No.	Code No.	Parts Name	Quantity	Index No.	Code No.	Parts Name	Quantity	Index No.	Code No.	Parts Name	Quantity
# 1	443-025-6	Casing	1	#49	970-092-0	Pin (H) (2×5.5)	1	For US-LT41PA/PB-15			
# 2	480-091-8	Air Inlet Bushing	1	#50	970-228-0	Pin (H) (3×28)	1	#17	472-287-7	Rotor	1
# 3	480-100-9	Valve	1	#51	971-120-0	Pin (2×20)	1	#92	472-460-5	Rotor Gear	1
# 4	443-103-5	Valve Rod Bushing	1	#52	971-123-0	Pin (2×23)	1	#93	472-470-5	First Planet Gear	6
# 5	177-107-5	Valve Lever	1	#54	973-006-0	Roll Pin (2×6)	1	#94	472-480-5	First Gear Cage	1
# 6	480-210-9	Reverse Valve	1	#55	973-010-0	Roll Pin (2×10)	1	#95	472-485-5	Second Gear Cage	1
# 7	480-211-9	Reverse Valve Bushing	1	#56	973-012-0	Roll Pin (2×12)	1	#26	472-807-7	Spacer	1
# 8	480-212-8	Reverse Lever	1	#57	973-018-0	Roll Pin (2×18)	1	#27	496-483-1	Gear Cage Spacer	1
# 9	443-104-5	Valve Rod	1	#58	975-106-0	Spacer (18.5×11×1)	1	#53	972-089-0	Needle Roller (3×8)	6
#10	443-254-5	Shut-Off Valve	1	#59	976-006-0	Spring (3×5) (0.4)	1	#78	976-516-0	Spring (22.1×28) (2.3)	1
#11	443-282-6	Handle Bushing	1	#60	976-058-0	Spring (4.5×11) (0.4)	1	For US-LT41PA/PB-21			
#12	443-291-5	Rear Plate Spacer	1	#61	976-450-0	Spring (18.5×10) (1.0)	1	#96	472-287-3	Rotor	1
#13	480-780-8	Exhaust Stack	1	#63	977-150-0	Cone Spring (6.8×8.5×3)(0.4)	1	#97	472-470-3	Planet Gear	3
#14	177-835-6	Filter	1	#64	978-218-0	Snap Ring (22×1)	1	#98	472-480-3	Gear Cage	1
#15	472-285-7	Rear Plate	1	#65	979-002-0	Inner Snap Ring (9)	1	#99	472-807-3	Spacer	1
#16	443-286-5	Cylinder	1	#66	979-326-0	Inner Snap Ring (IRTW-26)	1	#53	972-089-0	Needle Roller (3×8)	3
#18	472-288-0	Blade (PC)	5	#67	981-001-0	Ball (3/32)	21	#79	976-517-0	Spring (21.5×31) (2.0)	1
#19	472-289-7	Front Plate	1	#68	981-002-0	Ball (1/8)	2	Parts for A Type (5mm Hex.) Anvil			
#20	463-029-8	Gear Casing	1	#69	981-004-0	Ball (3/16)	5	[Take out #31, #66, #75 and use below parts.]			
#28	472-257-8	Regulating screw	1	#70	981-206-0	Ball (1/4)	1	#89	472-319-6	Anvil	1
#29	471-318-5	Pilot Pin	1	#71	982-063-0	Ball Bearing (606ZZ)	1	#90	981-003-0	Ball (5/32)	1
#30	472-319-7	Anvil	1	#72	982-100-0	Ball Bearing (6000)	1	#91	916-710-0	Double Bit No. 2×70(5H)	1
#31	463-334-7	Anvil Spacer	1	#73	987-039-0	Miniature Ball Bearing (R1560ZZ)	1	Accessories			
#32	461-344-6	Cam Retainer	1					#77	916-810-0	Double Bit No. 2×75	1
#33	472-346-5	Cam	1					#80	939-402-0	Manual Driver(No.2)	1
#34	472-351-7	Bit Sleeve	1					#88	940-113-0	Air Hose Nipple	1
#35	471-356-7	Bit Band	1					Optional Accessories			
#36	463-369-7	Clutch Casing	1					For Slotted Head Bit and Finder (in common)			
#37	472-370-7	Clutch Casing Sleeve	1					[Take out #42 and use following]			
#38	472-375-7	Cam Ring	1					#82	472-082-7	Bit Casing Set Screw	1
#39	463-397-7	Nut Flange	1					#83	471-057-7	Bit Casing	1
#40	472-379-8	Retainer	1					#84	916-030-0	(-) Bit (5×56) (6.35H)	1
#41	472-562-8	Stopper	1					#85	917-350-0	Finder (7.3×56×24)	1
#42	472-567-7	Bushing	1					#86	976-330-0	Spring (13.8×18) (0.8)	1
#43	471-670-7	Band	1								
#44	471-764-7	Notch Pin	1								
#45	010-790-1	Suspension Ring	1								
#46	944-019-0	Back Up Ring (P19)	1								
#47	952-106-0	Allen Head Dog Point Screw (M4×6)	1								
#48	969-470-0	Pin (E) (2×8)	1								
				For US-LT41PA/PB-08							
				#17	472-287-7	Rotor	1				
				#21	472-460-7	Rotor Gear	1				
				#22	472-470-7	First Planet Gear	3				
				#23	472-471-7	Second Planet Gear	3				
				#24	472-480-7	First Gear Cage	1				
				#25	472-485-7	Second Gear Cage	1				
				#26	472-807-7	Spacer	1				
				#27	496-483-1	Gear Cage Spacer	1				
				#53	972-089-0	Needle Roller (3×8)	6				
				#62	976-515-0	Spring (22.7×28) (2.6)	1				

When ordering spare parts, please specify tool type, code number and part name.

Printed in Japan



URYU SEISAKU, LTD. Osaka, Japan

For further information, please contact at any time your nearest URYU distributor.

OKA-395-04-03-09-2006