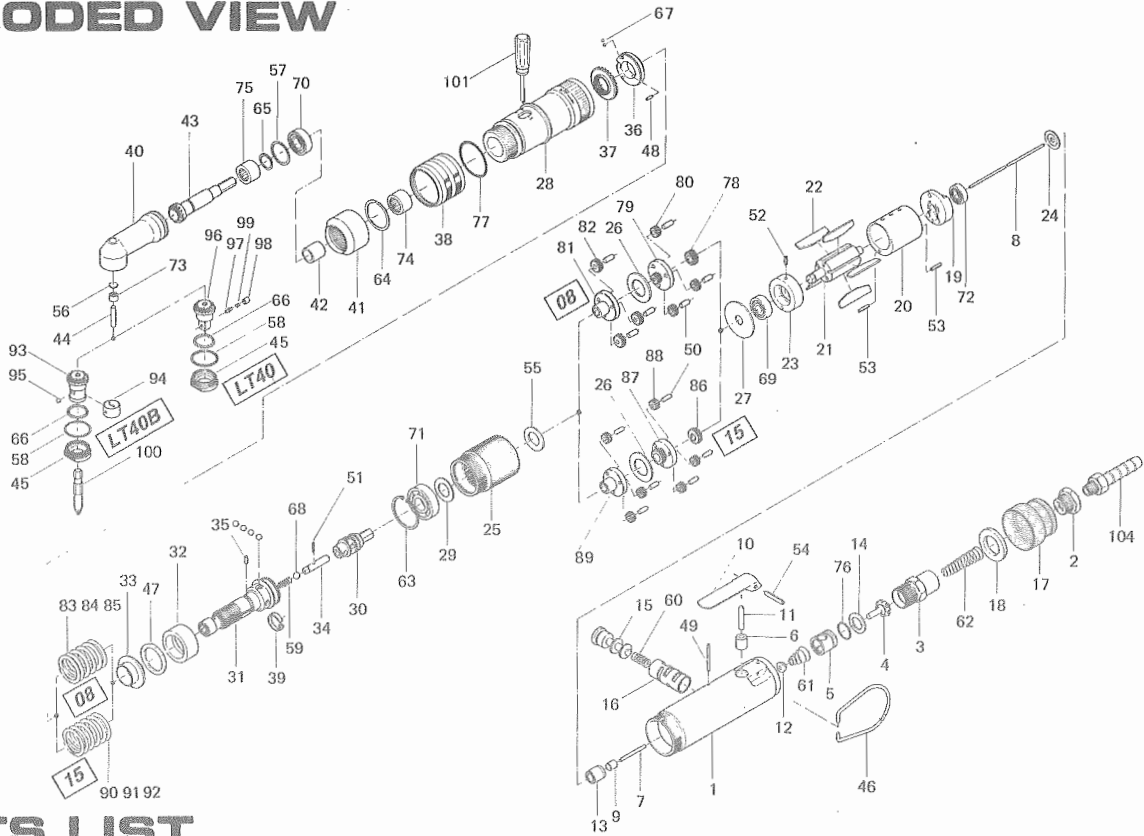


# US-LT40(B)-08(15)C SCREW DRIVER

## EXPLODED VIEW



## PARTS LIST

Index No.	Code No.	Part Name	Quantity	Index No.	Code No.	Part Name	Quantity	Index No.	Code No.	Part Name	Quantity
# 1	461-025-6	Casing	1	# 45	469-488-5	Angle Head Casing Cover	1	# 80	472-470-7	First Planet Gear	3
# 2	408-091-2	Air Inlet Bushing	1	# 46	010-790-1	Suspension Ring	1	# 81	472-485-7	Second Gear Cage	1
# 3	461-097-6	Air Inlet Connector	1	# 47	944-019-0	Back-up Ring (P19)	1	# 82	472-471-1	Second Planet Gear	3
# 4	259-100-0	Valve	1	# 48	970-092-0	Pin (H) (2x5.5)	1	# 83	976-515-0	Spring (22.7x28) (2.6) (STANDARD)	1
# 5	461-102-6	Valve Bushing	1	# 49	970-105-0	Pin (H) (2x24)	1	# 84	976-516-0	Spring (22.1x28) (2.3) (WEAK)	1
# 6	553-103-1	Valve Rod Bushing	1	# 50	972-089-0	Roller Pin (3x8)	6	# 85	976-517-0	Spring (21.5x31) (2.0) (WEAKER)	1
# 7	461-104-6	Valve Rear Rod	1	# 51	973-003-0	Roll Pin (1.5x8)	1	<b>Parts for US-LT40(B)-15C</b>			
# 8	463-104-7	Valve Rod	1	# 52	973-006-0	Roll Pin (2x6)	1	# 86	472-460-5	Rotor Gear	1
# 9	444-106-8	Valve Rod Cap	1	# 53	973-010-0	Roll Pin (2x10)	2	# 87	472-480-5	First Gear Cage	1
# 10	466-107-5	Valve Lever	1	# 54	973-118-0	Roll Pin (3x18)	1	# 88	472-470-5	First Planet Gear	6
# 11	461-114-6	Valve Pin	1	# 55	975-106-0	Spacer (18.5x11x1)	1	# 89	472-485-5	Second Gear Cage	1
# 12	259-254-0	Shut-off Valve	1	# 56	975-590-0	Round Plate (6.3x1)	1	# 90	976-516-0	Spring (22.1x28) (2.3) (STANDARD)	1
# 13	461-567-6	Bushing	1	# 57	975-768-0	Adjusting Spacer (19x16.2xT)	1	# 91	976-515-0	Spring (22.7x28) (2.6) (STRONG)	1
# 14	461-872-6	Valve Packing	1	# 58	975-771-0	Adjusting Spacer (20x18xT)	1	# 92	976-517-0	Spring (21.5x31) (2.0) (WEAK)	1
# 15	472-210-7	Reverse Valve	1	# 59	976-058-0	Spring (4.5x11) (0.4)	1	<b>Parts for US-LT40B</b>			
# 16	472-211-7	Reverse Valve Bushing	1	# 60	976-147-0	Spring (7x12) (0.6)	1	# 93	469-430-5	Driven Gear	1
# 17	472-782-7	Exhaust Deflector	1	# 61	977-071-0	Cone Spring (5.5x11.5x15)	1	# 94	430-356-1	Bit Band	1
# 18	472-835-7	Filter	1	# 62	977-155-0	Cone Spring (7x10x35)	1	# 95	981-002-0	Ball (1/8)	1
# 19	472-285-7	Rear Plate	1	# 63	979-019-0	Inner Snap Ring (26)	1	<b>Parts for US-LT40</b>			
# 20	472-286-7	Cylinder	1	# 64	979-190-0	Outer Snap Ring (22)	1	# 96	469-430-9	Driven Gear (P)	1
# 21	472-287-7	Rotor	1	# 65	979-351-0	Inner Snap Ring (ISTW-10)	1	# 97	469-800-9	Socket Retainer Pin	1
# 22	472-288-7	Blade	5	# 66	981-000-0	Ball (1/16)	24	# 98	469-567-9	Bushing	1
# 23	472-289-7	Front Plate	1	# 67	981-001-0	Ball (3/32)	2	# 99	976-018-0	Spring (2.8x8.5) (0.3)	1
# 24	461-291-6	Rear Plate Spacer	1	# 68	981-004-0	Ball (3/16)	5	<b>Accessories</b>			
# 25	472-029-7	Gear Casing	1	# 69	982-013-0	Ball Bearing (606)	1	#100	916-510-0	(+) Double Bit (No. 2x23) (6.35)	1
# 26	496-483-1	Gear Casing Spacer	1	# 70	982-035-0	Ball Bearing (698)	1	#101	939-400-0	Manual Driver (No. 1)	1
# 27	472-807-7	Spacer	1	# 71	982-100-0	Ball Bearing (6000)	1	#104	940-113-0	Air Hose Nipple (NPT 1/4x1/4)	1
# 28	461-369-6	Clutch Casing	1	# 72	987-015-0	Miniature Ball Bearing (R1560)	1				
# 29	461-344-6	Cam Retainer	1	# 73	988-090-0	Needle Roller Bearing (B-24)	1				
# 30	472-346-7	Cam	1	# 74	988-394-0	Needle Roller Bearing (FJ-1210)	1				
# 31	472-319-7	Anvil	1	# 75	988-689-0	Needle Roller Bearing (RLM-1010)	1				
# 32	472-375-7	Cam Ring	1	# 76	990-911-0	O-Ring (SNS-12)	1				
# 33	472-379-8	Retainer	1	# 77	990-923-0	O-Ring (SNS-26)	1				
# 34	471-318-7	Pilot Pin	1	<b>Parts for US-LT40(B)-08C</b>							
# 35	471-764-7	Notch Pin	1	# 78	472-460-7	Rotor Gear	1				
# 36	472-562-8	Spring Holder	1	# 79	472-480-7	First Gear Cage	1				
# 37	472-257-8	Regulating Screw	1								
# 38	472-370-7	Clutch Casing Sleeve	1								
# 39	471-670-7	Band	1								
# 40	469-441-6	Angle Casing	1								
# 41	469-081-5	Locking Nut	1								
# 42	469-807-5	Spacer	1								
# 43	469-420-5	Driving Gear	1								
# 44	469-431-6	Driven Gear Spindle	1								

When ordering spare parts, please specify tool type, code number and part name.

Printed in Japan

**URYU SEISAKU, LTD.** Osaka, Japan