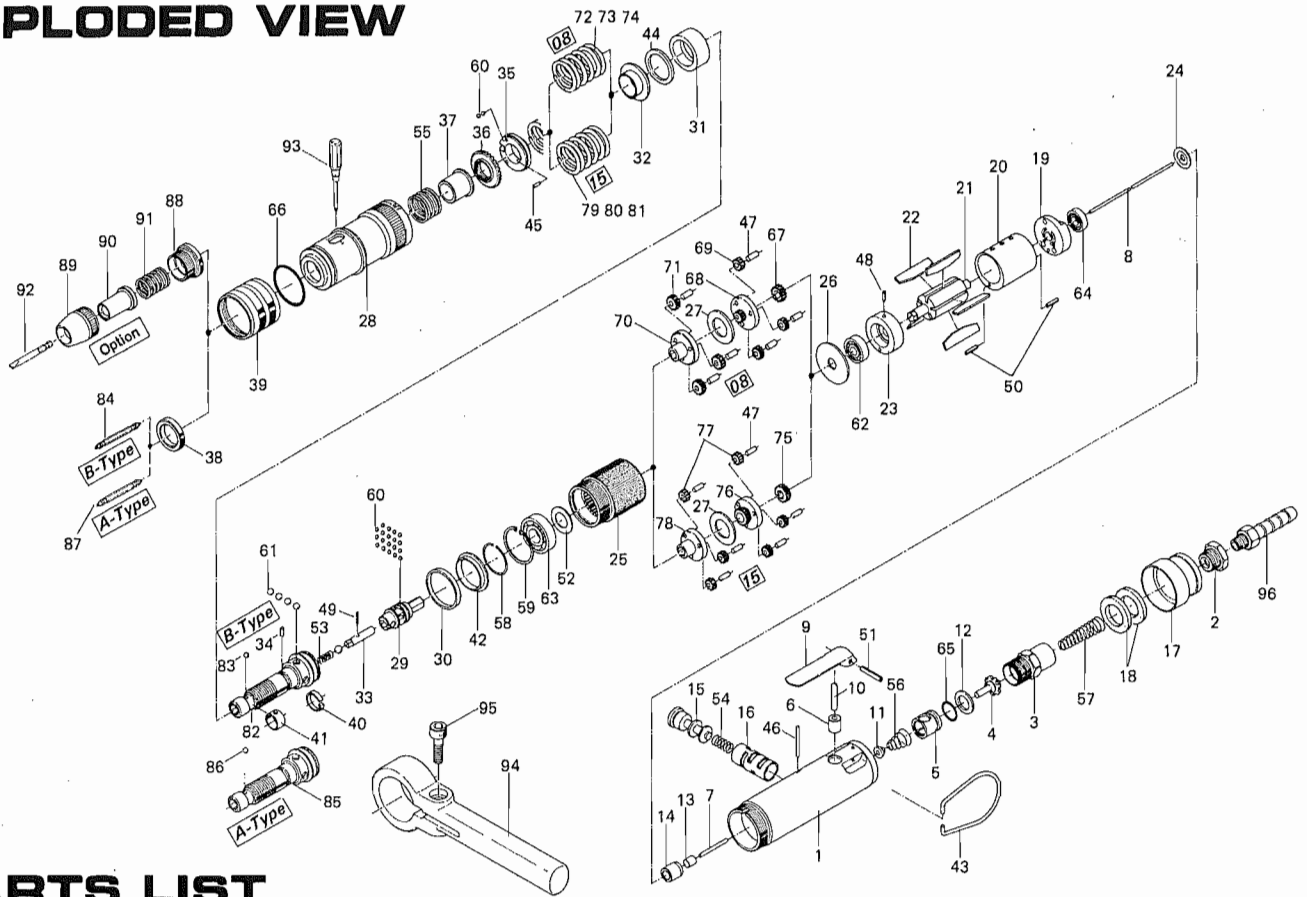


# US-LT40A(B)L SERIES SCREW DRIVER

## EXPLODED VIEW



## PARTS LIST

| Index No. | Code No.  | Part Name             | Quantity | Index No.                    | Code No.  | Part Name                        | Quantity | Index No.                    | Code No.  | Part Name                       | Quantity |  |
|-----------|-----------|-----------------------|----------|------------------------------|-----------|----------------------------------|----------|------------------------------|-----------|---------------------------------|----------|--|
| # 1       | 461-025-6 | Casing                | 1        | #41                          | 471-356-7 | Bit Band                         | 1        | <b>Parts for US-LT40L-15</b> |           |                                 |          |  |
| # 2       | 480-091-8 | Air Inlet Bushing     | 1        | #42                          | 463-334-7 | Anvil Spacer                     | 1        | #75                          | 472-460-5 | Rotor Gear                      | 1        |  |
| # 3       | 461-097-6 | Air Inlet Connector   | 1        | #43                          | 010-790-1 | Suspension Ring                  | 1        | #76                          | 472-480-5 | First Gear Cage                 | 1        |  |
| # 4       | 259-100-0 | Valve                 | 1        | #44                          | 944-019-0 | Back-up Ring (P-19)              | 1        | #77                          | 472-470-5 | First Planet Gear               | 1        |  |
| # 5       | 461-102-6 | Valve Bushing         | 1        | #45                          | 970-092-0 | Pin (2x5.5)                      | 1        | #78                          | 472-485-5 | Second Gear Cage                | 1        |  |
| # 6       | 553-103-1 | Valve Rod Bushing     | 1        | #46                          | 970-105-0 | Pin (2x24)                       | 1        | #79                          | 976-516-0 | Spring (22.1x28) (2.3) Standard | 1        |  |
| # 7       | 970-108-0 | Pin (H) (2x26.8 A)    | 1        | #47                          | 972-089-0 | Roller Pin (3x8)                 | 6        | #80                          | 976-515-0 | Spring (22.7x28) (2.6) Strong   | 1        |  |
| # 8       | 463-104-7 | Valve Rod             | 1        | #48                          | 973-006-0 | Roll Pin (2x6)                   | 1        | #81                          | 976-517-0 | Spring (21.5x31) (2.0) Weak     | 1        |  |
| # 9       | 466-107-5 | Valve Lever           | 1        | #49                          | 969-470-0 | Pin (E) (2x8)                    | 1        | <b>Parts for US-LT40BL</b>   |           |                                 |          |  |
| #10       | 461-114-6 | Valve Pin             | 1        | #50                          | 973-010-0 | Roll Pin (2x10)                  | 2        | #82                          | 472-319-7 | Anvil                           | 1        |  |
| #11       | 259-254-0 | Shut-Off Valve        | 1        | #51                          | 973-118-0 | Roll Pin (3x18)                  | 1        | #83                          | 981-002-0 | Ball (1/8)                      | 1        |  |
| #12       | 996-424-0 | Packing               | 1        | #52                          | 975-106-0 | Spacer (18.5x11x1)               | 1        | <b>Parts for US-LT40AL</b>   |           |                                 |          |  |
| #13       | 444-106-8 | Valve Rod Cap         | 1        | #53                          | 976-058-0 | Spring (4.5x11) (0.4)            | 1        | #85                          | 472-319-6 | Anvil                           | 1        |  |
| #14       | 461-567-6 | Bushing               | 1        | #54                          | 976-147-0 | Spring (7x12) (0.6)              | 1        | #86                          | 981-003-0 | Ball (5/32)                     | 1        |  |
| #15       | 893-057-1 | Reverse Valve (Lock)  | 1        | #55                          | 976-450-0 | Spring (18.5x10) (1.0)           | 1        | #88                          | 472-082-7 | Bit Casing Set Screw            | 1        |  |
| #16       | 472-211-7 | Reverse Valve Bushing | 1        | #56                          | 977-071-0 | Cone Spring (5.5x11.5x15)        | 1        | <b>Accessories</b>           |           |                                 |          |  |
| #17       | 472-782-7 | Exhaust Deflector     | 1        | #57                          | 977-155-0 | Cone Spring (7x10x35)            | 1        | #84                          | 916-810-0 | (+) Double Bit (No.2x75) (6.35) | 1        |  |
| #18       | 472-835-7 | Filter                | 2        | #58                          | 978-218-0 | Snap Ring (22x1)                 | 1        | #87                          | 916-710-0 | (+) Double Bit (No.2x70) (5H)   | 1        |  |
| #19       | 472-285-7 | Rear Plate            | 1        | #59                          | 979-326-0 | Inner Snap Ring (IRTW-26)        | 1        | #89                          | 471-057-7 | Bit Casing                      | 1        |  |
| #20       | 472-286-7 | Cylinder              | 1        | #60                          | 981-001-0 | Ball (3/32)                      | 21       | #90                          | 917-350-0 | Finder (7.3x56x24-4E)           | 1        |  |
| #21       | 472-287-7 | Rotor                 | 1        | #61                          | 981-004-0 | Ball (3/16)                      | 5        | #91                          | 976-330-0 | Spring (13.8x18) (0.8)          | 1        |  |
| #22       | 472-288-9 | Blade                 | 5        | #62                          | 982-063-0 | Ball Bearing (606ZZ)             | 1        | #92                          | 916-030-0 | (-) Bit (5x56)                  | 1        |  |
| #23       | 472-289-7 | Front Plate           | 1        | #63                          | 982-100-0 | Ball Bearing (6000)              | 1        | #93                          | 939-402-0 | Manual Driver (No.2)            | 1        |  |
| #24       | 461-291-6 | Rear Plate Spacer     | 1        | #64                          | 987-039-0 | Miniature Ball Bearing (R1560ZZ) | 1        | #94                          | 472-516-7 | Dead Handle                     | 1        |  |
| #25       | 472-029-7 | Gear Casing           | 1        | #65                          | 990-911-0 | O-Ring (SNS-12)                  | 1        | #95                          | 945-222-0 | Allen Head Bolt (M6x22)         | 1        |  |
| #26       | 472-807-7 | Spacer                | 1        | #66                          | 990-923-0 | O-Ring (SNS-26)                  | 1        | #96                          | 940-113-0 | Air Hose Nipple (NPT 1/4x1/4)   | 1        |  |
| #27       | 496-483-1 | Gear Cage Spacer      | 1        | <b>Parts for US-LT40L-08</b> |           |                                  |          |                              |           |                                 |          |  |
| #28       | 463-369-7 | Clutch Casing         | 1        | #67                          | 472-460-7 | Rotor Gear                       | 1        |                              |           |                                 |          |  |
| #29       | 472-346-5 | Cam                   | 1        | #68                          | 472-480-7 | First Gear Cage                  | 1        |                              |           |                                 |          |  |
| #30       | 463-397-7 | Back-up Spacer        | 1        | #69                          | 472-470-7 | First Planet Gear                | 3        |                              |           |                                 |          |  |
| #31       | 472-375-7 | Cam Ring              | 1        | #70                          | 472-485-7 | Second Gear Cage                 | 1        |                              |           |                                 |          |  |
| #32       | 472-379-8 | Retainer              | 1        | #71                          | 472-471-7 | Second Planet Gear               | 3        |                              |           |                                 |          |  |
| #33       | 471-318-5 | Pilot Pin             | 1        | #72                          | 976-515-0 | Spring (22.7x28) (2.6) Standard  | 1        |                              |           |                                 |          |  |
| #34       | 471-764-7 | Notch Pin             | 1        | #73                          | 976-516-0 | Spring (22.1x28) (2.3) Weak      | 1        |                              |           |                                 |          |  |
| #35       | 472-562-8 | Spring Holder         | 1        | #74                          | 976-517-0 | Spring (21.5x31) (2.0) Weaker    | 1        |                              |           |                                 |          |  |
| #36       | 472-257-8 | Regulating Screw      | 1        |                              |           |                                  |          |                              |           |                                 |          |  |
| #37       | 472-351-7 | Bit Sleeve            | 1        |                              |           |                                  |          |                              |           |                                 |          |  |
| #38       | 472-567-7 | Bushing               | 1        |                              |           |                                  |          |                              |           |                                 |          |  |
| #39       | 472-370-7 | Clutch Casing Sleeve  | 1        |                              |           |                                  |          |                              |           |                                 |          |  |
| #40       | 471-670-7 | Band                  | 1        |                              |           |                                  |          |                              |           |                                 |          |  |

When ordering spare parts, please specify tool type, code number and part name.

Printed in Japan

**URYU SEISAKU, LTD.** Osaka, Japan