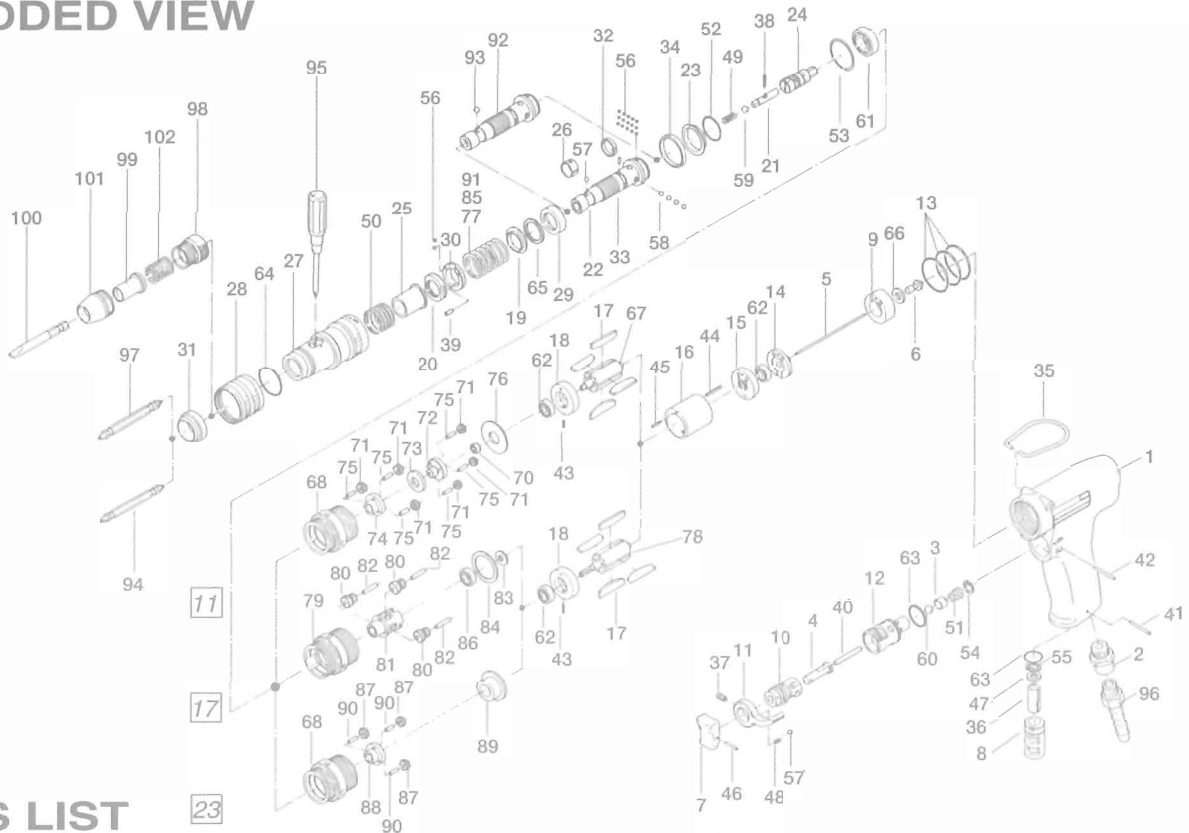


US-LT31PA/PB-[11,17,23]SERIES PISTOL-TYPE SCREWDRIVERS

EXPLODED VIEW



PARTS LIST

Index. No.	Code No.	Parts Name	Quantity	Index. No.	Code No.	Parts Name	Quantity	Index. No.	Code No.	Parts Name	Quantity	
# 1	442-025-5	Casing	1	# 45	973-003-U	Roll Pin (1.5×8)	1	# 79	462-029-6	Gear Casing	1	
# 2	480-091-8	Air Inlet Bushing	1	# 46	973-012-0	Roll Pin (2×12)	1	# 80	471-470-5	Planet Gear	3	
# 3	480-100-9	Valve	1	# 47	975-026-0	Spacer (11×3.9×2)	1	# 81	471-480-5	Gear Cage	1	
# 4	443-103-5	Valve Rod Bushing	1	# 48	976-006-0	Spring (3×5)(0.4)	1	# 82	972-036-0	Roller Pin (2.5×15.8A)	3	
# 5	442-104-4	Valve Rod	1	# 49	976-058-0	Spring (4.5×11)(0.4)	1	# 83	975-009-0	Spacer (9×5.2×0.3)	1	
# 6	443-254-5	Shut-Off Valve	1	# 50	976-450-0	Spring (18.5×10)(1.0)	1	# 84	975-188-0	Spacer (26×20×1.5)	1	
# 7	177-107-5	Valve Leve	1	# 51	977-150-0	Corn Spring (6.8×8.5×8)(0.4)	1	# 85	976-493-0	Spring (20.8×22)(2.0)	1	
# 8	480-780-8	Exhaust Stack	1	# 52	978-185-0	Snap Ring (19×1)	1			(Standard)	1	
# 9	442-282-5	Shut-Off Valve Bushing	1	# 53	978-229-0	Snap Ring (23×1)	1	# 85-1	976-471-0	Spring (19.4×22)(1.6)(Weak)	1	
# 10	480-210-9	Reverse Valve	1	# 54	979-002-0	Inner Snap Ring (9)	1	# 85-2	976-504-0	Spring (21×22)(2.3)(Strong)	1	
# 11	480-212-8	Reverse Lever	1	# 55	979-004-0	Inner Snap Ring (11)	1	# 86	987-013-0	Miniature Ball Bearing(R-1350)	1	
# 12	480-211-9	Reverse Valve Bushing	1	# 56	981-001-0	Ball (3/32)	17	For US-LT31PA/PB-23				
# 13	990-917-0	O-Ring (SNS-24)	3	# 57	981-002-0	Ball (1/8)	2	# 78	471-287-5	Rotor	1	
# 14	442-291-4	Rear Plate Spacer	1	# 58	981-003-0	Ball (5/32)	4	# 68	462-029-8	Gear Casing	1	
# 15	471-285-7	Rear Plate	1	# 59	981-004-0	Ball (3/16)	1	# 87	471-470-3	Planet Gear	3	
# 16	442-286-4	Cylinder	1	# 60	981-206-0	Ball (1/4)	1	# 88	471-480-3	Gear Cage	1	
# 17	471-288-0	Blade (PC)	4	# 61	982-901-0	Ball Bearing (6900)	1	# 89	471-483-3	Gear Cage Spacer	1	
# 18	471-289-7	Front Plate	1	# 62	987-041-0	Miniature Ball Bearing (1350ZZ)	2	# 90	92-033-0	Roller Pin (2.5×8)	3	
# 19	471-164-8	Spring Holder	1	# 63	990-912-0	O-Ring(SNS-14)	2	# 91	976-471-0	Spring (19.4×22)(1.6)	1	
# 20	471-257-7	Regulator Screw	1	# 64	990-919-0	O-Ring(SNS-22)	1			(Standard)	1	
# 21	471-318-5	Pilot Pin	1	# 65	944-016-0	Back-Up Ring (P16)	1	# 91-1	976-493-0	Spring (20.8×22)(2.0)(Strong)	1	
# 22	471-319-2	Anvil	1	# 66	996-411-0	Packing (11×6×1)	1	Part for A-type (5mm Hex.) Anvil				
# 23	462-334-7	Anvil Spacer	1	For US-LT31PA/PB-11				# 92	471-319-5	Anvil	1	
# 24	471-346-5	Cam	1	# 67	471-287-7	Rotor	1	# 93	981-003-0	Ball (5/32)	1	
# 25	471-351-6	Bit Sleeve	1	# 68	462-029-8	Gear Casing	1	ACCESSORIES				
# 26	471-356-7	Bit Band	1	# 69	471-445-7	Middle Gear Casing	1	# 94	916-810-0	(+)Double-end Bit (No.2×75)(6.35H)	1	
# 27	462-369-7	Clutch Casing	1	# 70	471-460-7	Rotor Gear	1	# 95	939-402-0	Screwdriver (No.2)	1	
# 28	471-370-7	Clutch Casing Sleeve	1	# 71	471-471-7	Second Planet Gear	6	# 96	940-113-0	Air Hose Nipple (NPT1/4×1/4)	1	
# 29	471-375-8	Cam Ring	1	# 72	471-480-7	First Gear Cage	1	# 97	916-710-0	(+)Double-end Bit (No.2×70)(5H)	1	
# 30	471-562-7	Retainer	1	# 73	471-483-7	Gear Cage Spacer	1	OPTIONAL ACCESSORIES				
# 31	471-567-6	Bushing	1	# 74	471-485-7	Second Gear Cage	1	For Slotted Head Bit and Finder(in common)				
# 32	471-670-7	Band	1	# 75	972-033-0	Roller Pin (2.5×8)	6	(Take out #31 471-567-6 Bushing and use following)				
# 33	471-764-7	Notch Pin	1	# 76	975-188-0	Spacer (26×10×1.5)	1	# 98	471-082-7	Bit Casing Set Screw	1	
# 34	462-397-7	Back-Up Spacer	1	# 77	976-472-0	Spring (20.6×22)(2.1)(Standard)	1	# 99	471-057-7	Bit Casing	1	
# 35	010-790-1	Suspension Ring	1	# 77-1	976-493-0	Spring (20.8×22)(2.0)(Weak)	1	# 100	916-030-0	(-)Bit (5×56)(6.35H)	1	
# 36	442-835-4	Filter (φ 10×φ 5×2.5)	1	# 77-2	976-471-0	Spring (19.4×22)(1.6)(Weaker)	1	# 101	917-350-0	Finder	1	
# 37	952-106-0	Allen Head Dog Point Screw (M4×6)	1	# 77-3	976-504-0	Spring (22×22)(2.3)(Strong)	1	# 102	976-330-0	Spring (13.8×18)(0.8)	1	
# 38	969-470-0	Pin (2×8)	1	For US-LT31PA/PB-17								
# 39	970-091-0	Pin (H)(2×4.5)	1	# 78	471-287-5	Rotor	1					
# 40	970-228-0	Pin (H)(3×28)	1									
# 41	971-122-0	Pin (2×22)	1									
# 42	971-123-0	Pin (2×23)	1									
# 43	973-001-0	Roll Pin (1.5×6)	1									
# 44	973-002-0	Roll Pin (1.5×15)	1									

When ordering spare parts, please specify tool type, code number and part name.

Printed in Japan



URYU SEISAKU, LTD. Osaka, Japan