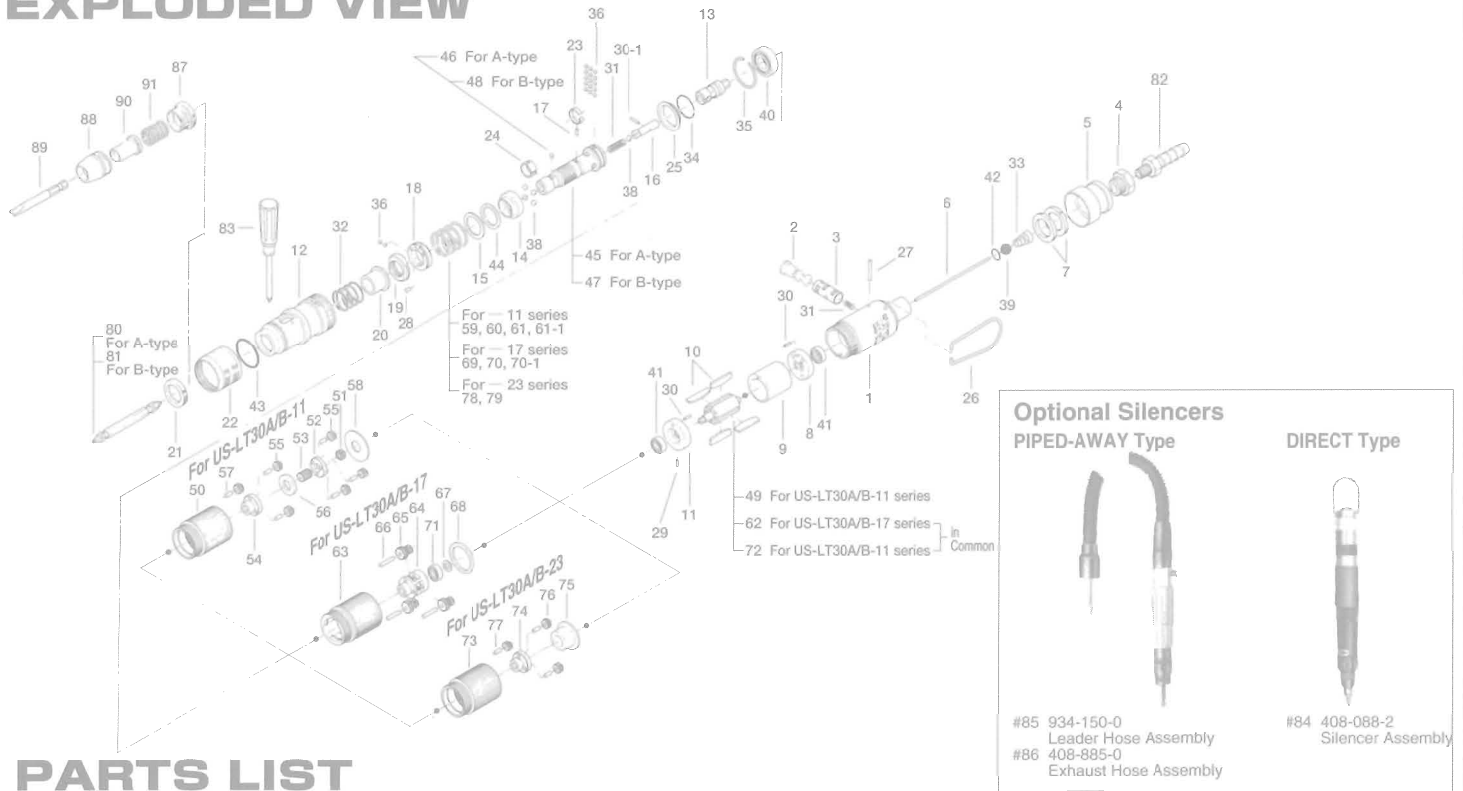


US-LT30 SERIES SCREW DRIVERS

EXPLODED VIEW



PARTS LIST

Index. No.	Code No.	Parts Name	Quantity	Index. No.	Code No.	Parts Name	Quantity	Index. No.	Code No.	Parts Name	Quantity
Common Parts for US-LT30 series											
# 1	471-025-8	Casing	1	# 38	981-003-0	Ball (5/32)	5	# 67	975-009-0	Spacer (9×5.2×0.3)	1
# 2	893-056-1	Reverse Valve (Lock)	1	# 39	981-208-0	Ball (5/16) Black	1	# 68	975-188-0	Spacer (26×20×1.5)	1
# 3	471-211-7	Reverse Valve Bushing	1	# 40	982-901-0	Ball Bearing (6900)	1	# 69	976-493-0	Spring (Red-Standard)	1
# 4	480-091-8	Air Inlet Bushing	1	# 41	987-041-0	Miniature Ball Bearing (R1350ZZ)	2	# 70	976-471-0	Spring (Pink-Weak)	1
# 5	408-782-1	Exhaust Deflector	1	# 42	990-004-0	O Ring (P-6)	1	# 70-1	976-472-0	Spring (Blue-Strong)	1
# 6	471-104-7	Valve Rod	1	# 43	990-919-0	O Ring (SNS-22)	1	# 71	987-013-0	Miniature Ball Bearing (R1350)	1
# 7	471-835-5	Filter (F100)	2	# 44	944-016-0	Back-Up Ring (P-16)	1	Parts for US-LT30A-23 and 30B-23			
# 8	471-285-7	Rear Plate	1	Parts for US-LT30A series				# 72	471-287-5	Rotor	1
# 9	471-286-7	Cylinder	1	# 45	471-319-5	Anvil	1	# 73	471-029-7	Gear Casing	1
# 10	471-288-0	Rotor Blade (PC)	4	# 46	981-004-0	Ball (3/16)	1	# 74	471-480-3	Gear Cage	1
# 11	471-289-7	Front Plate	1	Parts for US-LT30B series				# 75	471-483-3	Gear Cage Spacer	1
# 12	471-369-7	Clutch Casing	1	# 47	471-319-2	Anvil	1	# 76	471-470-3	Planet Gear	3
# 13	471-346-5	Cam	1	# 48	981-004-0	Ball (3/16)	1	# 77	972-033-0	Roller Pin (2.5×8)	3
# 14	471-375-8	Cam Ring	1	Parts for US-LT30A-11 and 30B-11				# 78	976-471-0	Spring (Pink-Standard)	1
# 15	471-164-8	Spring Setter	1	# 49	471-287-7	Rotor	1	# 79	976-493-0	Spring (Red-Strong)	1
# 16	471-318-5	Pilot Pin	1	# 50	471-029-7	Gear Casing	1	ACCESSORIES			
# 17	471-764-7	Notch Pin	1	# 51	471-460-7	Rotor Gear	1	# 80	916-710-0	(+) Double-end Bit (No.2×70) for LT30A	1
# 18	471-562-7	Retainer	1	# 52	471-480-7	First Gear Cage	1	# 81	916-810-0	(+) Double-end Bit (No.2×75) for LT30B	1
# 19	471-257-7	Regulating Screw	1	# 53	471-445-7	Middle Gear	1	# 82	940-113-0	Air Hose Nipple	1
# 20	471-351-6	Bit Sleeve	1	# 54	471-485-7	Second Gear Cage	1	# 83	939-402-0	Manual Driver No.2 (φ5)	1
# 21	471-567-6	Bushing	1	# 55	471-471-7	Second Planet Gear	6	For Direct Type			
# 22	471-370-7	Clutch Casing Sleeve	1	# 56	471-483-7	Gear Cage Spacer	1	# 84	408-088-2	Silencer Assembly	1
# 23	471-670-7	Band	1	# 57	972-033-0	Roller Pin (2.5×8)	6	For Piped-away Type			
# 24	471-356-7	Bit Band	1	# 58	975-178-0	Spacer (26×10×1.5)	1	# 85	934-150-0	Leader Hose Assembly	1
# 25	462-334-7	Anvil Spacer	1	# 59	976-472-0	Spring (Blue-Standard)	1	# 86	408-885-0	Exhaust Hose Assembly	1
# 26	401-790-1	Suspension Ring	1	# 60	976-493-0	Spring (Red-Weak)	1	For Slotted Head Bit and Finder			
# 27	972-020-0	Roller Pin (2×19.8A)	1	# 61	976-471-0	Spring (Pink-Weaker)	1	# 87	471-082-7	Bit Casing Set Ccrew	1
# 28	970-091-0	Pin (2×4.5)	1	# 61-1	976-504-0	Spring (Black-Strong)	1	# 88	471-057-7	Bit Casing	1
# 29	973-001-0	Roll Pin (1.5×6)	1	Parts for US-LT30A-17 and 30B-17				# 89	916-020-0	(-) Bit (4×51) (5H)	1
# 30	973-003-0	Roll Pin (1.5×8)	2	# 62	471-287-5	Rotor	1	# 90	917-299-0	Finder (4×51×15)	1
# 30-1	969-470-0	Pin (E) (2×8)	1	# 63	471-029-5	Gear Casing	1	# 91	976-330-0	Spring (13.8×18×0.8)	1
# 31	976-058-0	Spring (4.5×11)	2	# 64	471-480-5	Gear Cage	1				
# 32	976-450-0	Spring (18.5×10)	1	# 65	471-470-5	Planet Gear	3				
# 33	977-157-0	Cone Spring (7×11×20)	1	# 66	972-036-0	Roller Pin (2.5×15.8A)	3				
# 34	978-185-0	Snap Ring (19×1)	1								
# 35	978-229-0	Snap Ring (23×1)	1								
# 36	981-001-0	Ball (3/32)	17								

When ordering spare parts, please specify tool type, code number and part name.

Printed in Japan



URYU SEISAKU, LTD. Osaka, Japan