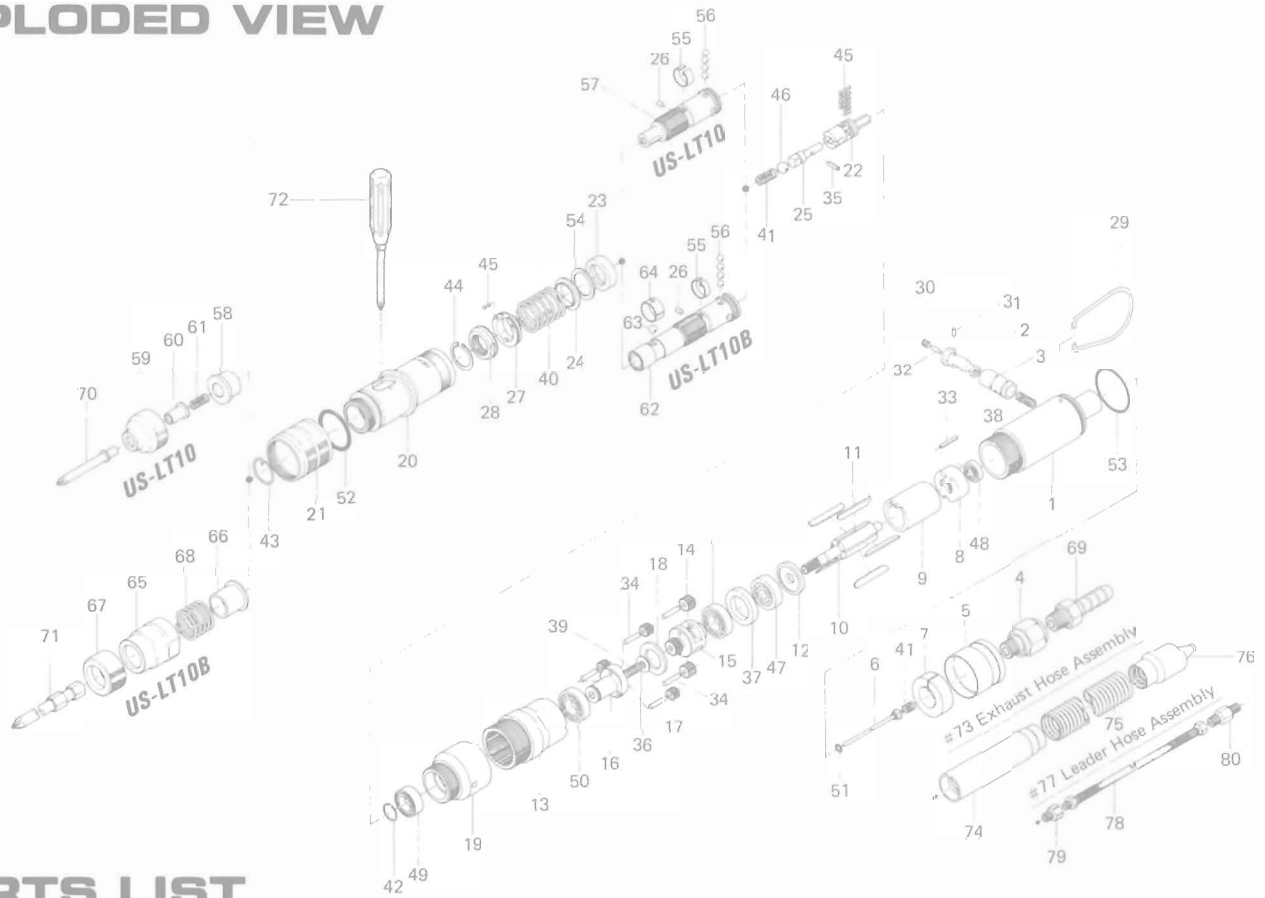


US-LT10 SERIES SCREWDRIVERS

EXPLODED VIEW



PARTS LIST

Index. No.	Code No.	Part Name	Quantity	Index. No.	Code No.	Part Name	Quantity	Index. No.	Code No.	Part Name	Quantity
US-LT10 Series Screwdrivers											
Common Parts											
# 1	473-025-2	Casing	1	#31	971-000-0	Pin (1.5x3)	1	#60	917-001-0	Finder (3.1x21x10)	1
# 2	459-210-1	Reverse Valve	1	#32	971-001-0	Pin (1.5x5)	1	#61	976-048-0	Spring (4x10)	1
# 3	459-211-1	Reverse Valve Bushing	1	#33	971-007-0	Pin (1.5x12)	1	Parts for US-LT10B			
# 4	405-091-1	Air Inlet Bushing	1	#34	972-009-0	Needle Roller (2x9)	5	#62	473-319-6	Anvil	1
# 5	459-782-1	Exhaust Deflector	1	#35	973-001-0	Roll Pin (1.5x6)	1	#63	981-002-0	Ball (1/8)	1
# 6	473-881-2	Valve Rod Assy.	1	#36	975-008-0	Spacer (9x2x1)	1	#64	470-356-8	Bit Band	1
# 7	459-835-2	Filter	1	#37	975-105-0	Spacer (18.3x12x3.5)	1	#65	473-057-4	Bit Casing	1
# 8	459-285-1	Rear Plate	1	#38	976-035-0	Spring (3.6x10)	1	#66	473-351-4	Bit Sleeve	1
# 9	459-286-1	Cylinder	1	#39	976-037-0	Spring (3.4x11)	1	#67	473-567-4	Bushing	1
#10	400-287-1	Rotor	1	#40	976-379-0	Spring (15x18)	1	#68	976-345-0	Spring (14 x 17)	1
#11	400-288-1	Blade	5	#41	976-058-0	Spring (4.5x11)	2	ACCESSORIES			
#12	400-289-1	Front Plate	1	#42	978-080-0	Snap Ring (8x1)	1	#69	940-103-0	Air Hose Nipple (NPT 1/8 x 1/4)	1
#13	459-029-2	Gear Casing	1	#43	978-141-0	Snap Ring (14x1)	1	#70	916-110-0	(+) Bit (No. 1 x 31) for US-LT10	1
#14	459-470-1	First Planet Gear	2	#44	979-351-0	Inner Snap Ring (ISTW-10)	1	#71	916-137-0	(+) Bit (No. 1 x 50) for US-LT10B	1
#15	459-480-1	First Gear Cage	1	#45	981-000-0	Ball (1/16)	18	#72	939-400-0	Torque Adjusting Driver (No.1)	1
#16	459-485-1	Second Gear Cage	1	#46	981-004-0	Ball (3/16)	1	OPTIONAL ACCESSORIES			
#17	459-471-1	Second Planet Gear	3	#47	987-017-0	Miniature Ball Bearing (R-1650)	1	#73	459-885-1	Exhaust Hose Assembly	1
#18	459-483-1	Gear Cage Spacer	1	#48	987-112-0	Miniature Ball Bearing (L-1040)	1	#74	459-779-1	Exhaust Stack Bushing Connector	1
#19	459-037-1	Gear Casing Connector	1	#49	987-122-0	Miniature Ball Bearing (L-1480)	1	#75	935-500-0	Exhaust Hose	1
#20	473-369-2	Clutch Casing	1	#50	987-123-0	Miniature Ball Bearing (L-1680)	2	#76	408-780-0	Exhaust Stack	1
#21	473-370-2	Clutch Casing Sleeve	1	#51	990-901-0	O Ring (SNS-3)	1	#77	934-201-0	Leader Hose Assembly	1
#22	473-346-2	Cam	1	#52	990-916-0	O Ring (SNS-18)	1	#78	934-200-0	Air Hose Assembly	1
#23	473-375-2	Cam Ring	1	#53	990-590-0	O Ring (17x1)	1	#79	942-100-0	Connecting Screw (NPT 1/8 x 1/8)	1
#24	473-164-2	Spring Setter	1	#54	944-013-0	Back-up Ring (P-12)	1	#80	942-140-0	Connecting Screw (NPT 1/4 x PS 1/4)	1
#25	473-318-2	Pilot Pin	1	#55	473-670-2	Band	1				
#26	473-764-2	Notch Pin	2	#56	981-002-0	Ball (1/8)	4				
#27	473-562-2	Retainer	1	Parts for US-LT10							
#28	473-257-2	Regulating Screw	1	#57	473-319-2	Anvil	1				
#29	401-790-1	Suspension Ring	1	#58	473-328-2	Anvil Bushing	1				
#30	953-053-0	Allen Head Flat Point Screw (M3x3)	1	#59	473-057-2	Bit Casing	1				

When ordering spare parts, please specify tool type, code number and part name.



URYU SEISAKU, LTD. Osaka, Japan

OKA-250-03-07-17-2006