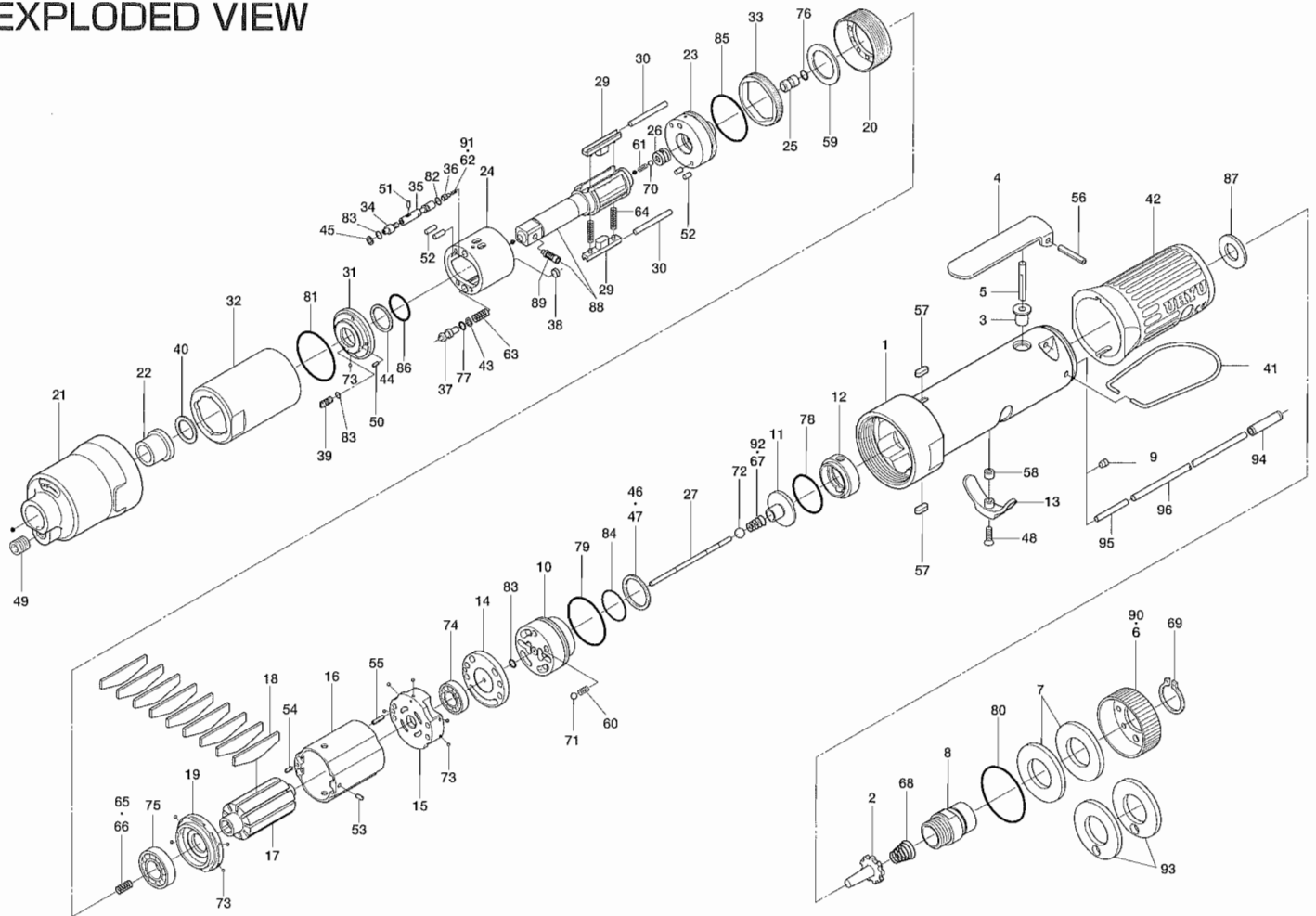


# ULT70S SERIES OIL-PULSE WRENCHES

## EXPLODED VIEW



## PARTS LIST

Index No.	Code No.	Parts Name	Quantity	Index No.	Code No.	Parts Name	Quantity	Index No.	Code No.	Parts Name	Quantity
# 1	129-025-6	Casing	1	#37	145-972-6	Accumulator	1	#72	981-003-0	Ball(5/32)	1
# 2	259-100-0	Valve	1	#38	145-908-7	Accumulator Cover	1	#73	981-045-0	Ball(1.5)	10
# 3	161-103-3	Valve Rod Bushing	1	#39	194-742-0	Oil Plug	1	#74	982-014-0	Ball Bearing(607)	1
# 4	196-107-7	Valve Lever	1	#40	178-327-9	Anvil Front Spacer	1	#75	982-902-0	Ball Bearing(6901)	1
# 5	128-104-8	Valve Rod	1	#41	191-790-1	Suspension Ring	1	#76	990-305-0	O-Ring(ARP568-003)(KS)	1
# 6	128-782-8	Exhaust Cover(Red)	1	#42	129-842-6	Casing Cover(Brown)	1	#77	990-320-0	O-Ring(ARP568-003)	1
# 7	128-835-8	Filter(K200)	2	#43	944-002-0	Supporting Ring(2.6×4.5×1)	1	#78	990-329-0	O-Ring(JW1530-19)	1
# 8	128-091-8	Air Inlet Bushing	1	#44	944-013-0	Supporting Ring(P-12)	1	#79	990-331-0	O-Ring(JW1530-21)	1
# 9	147-064-6	Filler	1	#45	944-203-0	Supporting Ring(3.1×5×1)	1	#80	990-603-0	O-Ring(28.5×1.3)	1
#10	129-253-2	Shut-Off Valve Bushing	1	#46	944-216-0	Supporting Ring(14×20×1.85)	1	#81	990-334-0	O-Ring(JW1530-24)	1
#11	145-254-6	Shut-Off Valve	1	#47	944-218-0	Supporting Ring(14×20×1.9)	1	#82	990-621-0	O-Ring(3.8×1.8×1.0)	1
#12	129-684-6	Cushion Spacer(Brown)	1	#48	948-426-0	Allen Flush Head Screw(M3×12)	1	#83	990-900-0	O-Ring(SNS-2)	3
#13	161-212-3	Reverse Lever	1	#49	966-099-0	Allen Head Plug 1/16(GM TYPE)	1	#84	990-914-0	O-Ring(SNS-16)	1
#14	128-291-8	Rear Plate Spacer	1	#50	969-449-0	Pin(G)(3×6)	1	#85	990-923-0	O-Ring(SNS-26)	1
#15	129-285-2	Rear Plate	1	#51	970-013-0	Pin(H)(1.5×4)	1	#86	992-020-0	SU-Ring(Q12)(NTN)	1
#16	129-286-6	Cylinder	1	#52	970-204-0	Pin(H)(3×6)	4	#87	996-424-0	Packing(16×9×2)	1
#17	129-287-6	Rotor	1	#53	971-102-0	Pin(2×3.8)	1	#88	891-550-1	Anvil Assembly	1
#18	129-288-6	Blade(PC)	9	#54	973-008-0	Roll Pin(2×8)	1	#89	891-300-1	Socket Pin Assembly	1
#19	128-289-8	Front Plate	1	#55	973-018-0	Roll Pin(2×18)	1	<b>Parts for ULT70SL</b>			
#20	147-036-6	Hammer Casing Connector	1	#56	973-122-0	Roll Pin(3×22)	1	#90	129-782-0	Exhaust Cover	1
#21	147-439-6	Front Casing	1	#57	974-008-0	Key(3×8)	2	#91	976-710-0	Spring(2.8×6.8)(0.4)	1
#22	190-328-6	Anvil Bushing	1	#58	975-004-0	Spacer(5.5×3.1×2.7)	1	#92	977-046-0	Cone Spring(4.0×4.6×9)(0.4)	1
#23	147-901-6	Rear Liner Plate	1	#59	975-752-0	Adjusting Spacer(15×10×t)	1	<b>Parts for TM-Type</b>			
#24	147-902-6	Liner	1	#60	976-006-0	Spring(3×5)	1	#93	851-053-1	Filter(K200)	2
#25	145-546-6	Piston	1	#61	976-645-0	Spring(2.4×5)(0.3)	1	#94	909-442-0	Quick Exhaust(AQ240F-04-00)	1
#26	145-929-6	Check Valve Cover	1	#62	976-709-0	Spring(2.8×6.9)(0.4)	1	#95	935-240-0	Nylon Tube(18NY)	1
#27	129-130-6	Operating Rod(2.1×70.7)	1	#63	976-666-0	Spring(4.3×23)(0.55)	1	#96	935-350-0	Polyurethane Hose(F1504)	1
#29	147-440-6	Driving Blade	2	#64	976-788-0	Spring(3.5×25)(0.45)WPC	2	<b>Accessories</b>			
#30	147-974-6	Roller(2.5×28)	2	#65	976-650-0	Spring(3.3×16)(0.45)	1	#97	939-091-0	Allen Wrench(1.5mm)	1
#31	147-904-6	Front Liner Plate	1	#66	976-662-0	Spring(Yellow)(3.3×18)(0.45)	1	#98	939-105-0	Allen Wrench(4mm)	1
#32	147-905-6	Liner Casing	1	#67	977-045-0	Cone Spring(4.0×4.6×9)(0.45)	1	#99	940-114-0	Air Hose Nipple(NPT 1/4×3/8)	1
#33	147-906-6	Liner Casing Cover	1	#68	977-227-0	Cone Spring(9×12×25)(0.8)	1	#100	909-449-0	Speed Controller(AS1001F-04)	1
#34	174-907-2	Relief Valve Spindle	1	#69	979-358-0	Inner Snap Ring(ISTW-17)	1				
#35	147-970-6	Relief Valve	1	#70	981-001-0	Ball(3/32)	1				
#36	144-270-0	Plug	1	#71	981-002-0	Ball(1/8)	1				

When ordering spare parts, please Specify tool type, code number and parts name.

Printed in Japan



**URYU SEISAKU, LTD.** Osaka, Japan

For further information, please contact at any time your nearest URYU distributor.

OKA-492-04-09-13-2001