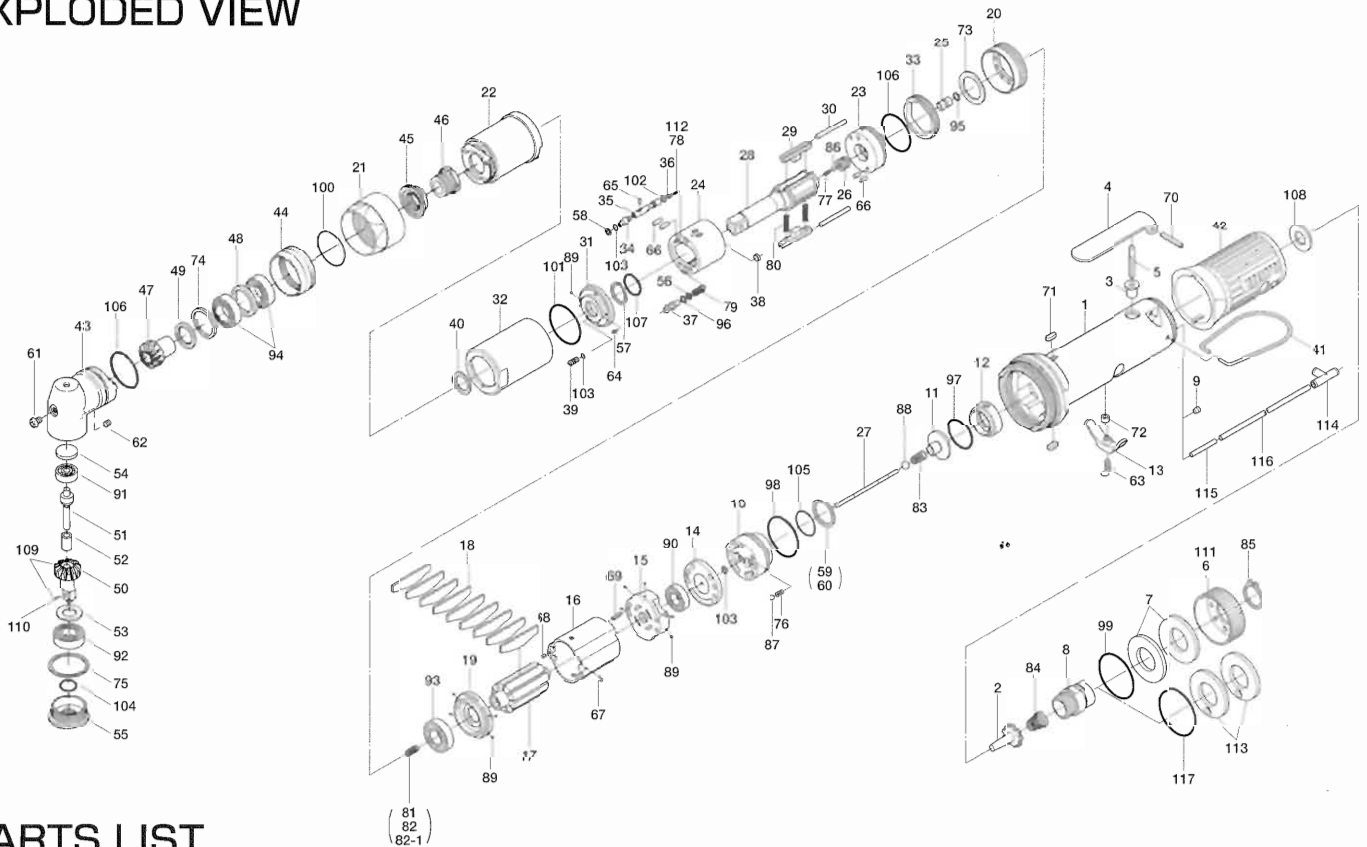


ULT70C SERIES OIL-PULSE WRENCHES

EXPLODED VIEW



PARTS LIST

Index No.	Code No.	Parts Name	Quantity	Index No.	Code No.	Parts Name	Quantity	Index No.	Code No.	Parts Name	Quantity
# 1	127-025-7	Casing	1	#44	127-382-7	Hammer Casing Nut	1	#83	977-045-0	Cone Spring (4.0×4.6×9) (0.45)	1
# 2	259-100-0	Valve	1	#45	160-797-7	Ball Bearing Setting Spindle	1	#84	977-227-0	Cone Spring (9×12×25) (0.8)	1
# 3	161-103-3	Valve Rod Bushing	1	#46	160-799-7	Ball Bearing Setting Spindle Nut	1	#85	979-358-0	Inner Snap Ring (ISTW-17)	1
# 4	196-107-7	Valve Lever	1	#47	179-420-6	Driving Gear	1	#86	981-001-0	Ball (3/32)	1
# 5	128-104-8	Valve Rod	1	#48	179-423-6	Driving Gear Bushing Spacer	1	#87	981-002-0	Ball (1/8)	1
# 6	128-782-8	Exhaust Cover	1	#49	179-425-6	Driving Gear Spacer	1	#88	981-003-0	Ball (5/32)	1
# 7	128-835-8	Filter (K200)	2	#50	020-430-1	Driven Gear (O)	1	#89	981-045-0	Ball (1.5mm)	10
# 8	128-091-8	Air Inlet Bushing	1	#51	188-431-7	Driven Gear Spindle	1	#90	982-014-0	Ball Bearing (607)	1
# 9	147-064-6	Filler	1	#52	020-432-1	Driven Gear Collar	1	#91	982-021-0	Ball Bearing (626)	1
#10	129-253-2	Shut-Off Valve Bushing	1	#53	020-433-1	Driven Gear Spacer	1	#92	982-101-0	Ball Bearing (6001)	1
#11	145-254-6	Shut-Off Valve	1	#54	562-391-7	Spindle Upper Plate	1	#93	982-902-0	Ball Bearing (6901)	1
#12	129-684-6	Bumper Spacer	1	#55	179-488-6	Angle Casing Cover	1	#94	982-904-0	Ball Bearing (6903)	2
#13	161-212-3	Reverse Lever	1	#56	944-002-0	Supporting Ring (2.6×4.5×1)	1	#95	990-305-0	O-Ring (ARP568-003) (KS)	1
#14	128-291-8	Rear Plate Spacer	1	#57	944-013-0	Supporting Ring (P12)	1	#96	990-320-0	O-Ring (ARP568-003)	1
#15	129-285-2	Rear Plate	1	#58	944-203-0	Supporting Ring (3.1×5.1)	1	#97	990-329-0	O-Ring (JW1530-19)	1
#16	129-286-6	Cylinder	1	#59	944-216-0	Supporting Ring (14×20×1.85)	1	#98	990-331-0	O-Ring (JW1530-21)	1
#17	129-287-6	Rotor	1	#60	944-218-0	Supporting Ring (14×20×1.9)	1	#99	990-603-0	O-Ring (28.5×1.3)	1
#18	129-288-6	Blade (PC)	9	#61	945-949-0	Hexagon Round Head Bolt (M5×6)	1	#100	990-605-0	O-Ring (25×1.45)	1
#19	128-289-8	Front Plate	1	#62	954-206-0	Allen Head Cone Point Screw (M5×6)	1	#101	990-334-0	O-Ring (JW1530-24)	1
#20	127-036-7	Hammer Casing Connector	1	#63	948-426-0	Allen Flush Head Screw (M3×12)	1	#102	990-621-0	O-Ring (3.8×1.8×1.0)	1
#21	180-081-4	Front Case Nut	1	#64	969-449-0	Pin (G) (3×6)	1	#103	990-900-0	O-Ring (SNS-2)	3
#22	127-439-7	Front Casing	1	#65	970-013-0	Pin (H) (1.5×4)	1	#104	990-910-0	O-Ring (SNS-12.5)	1
#23	147-901-6	Rear Liner Plate	1	#66	970-204-0	Pin (H) (3×6)	1	#105	990-914-0	O-Ring (SNS-16)	1
#24	147-902-6	Liner	1	#67	971-102-0	Pin (2×3.8)	1	#106	990-923-0	O-Ring (SNS-26)	2
#25	145-546-6	Piston	1	#68	973-008-0	Roll Pin (2×8)	1	#107	992-020-0	SU-Ring (Q12) (NTN)	1
#26	145-929-6	Check Valve Cover	1	#69	973-018-0	Roll Pin (2×18)	1	#108	996-424-0	Urethane Packing (16×9×2)	1
#27	129-130-6	Operating Rod (2.1×70.7)	1	#70	973-122-0	Roll Pin (3×22)	1	#109	891-346-1	Driven Gear Assembly	1
#28	147-319-6	Anvil	1	#71	974-008-0	Key (3×8)	2	#110	891-300-1	Socket Pin Assembly	1
#29	147-440-6	Driving Blade	2	#72	975-004-0	Spacer (5.5×3.1×2.7)	1	Parts for ULT70CL			
#30	147-974-6	Roller (2.5×28)	2	#73	975-752-0	Adjusting Spacer (15×10×t)	1	#111	129-782-0	Exhaust Cover	1
#31	147-904-6	Front Liner Plate	1	#74	975-803-0	Adjusting Spacer (30×26×t)	1	#112	976-673-0	Spring (2.8×7.8) (0.4)	1
#32	147-905-6	Liner Casing	1	#75	975-836-0	Adjusting Spacer (36×32.5×t)	1	Parts for (TM)-Type			
#33	147-906-6	Liner Casing Setter	1	#76	976-006-0	Spring (3×5) (0.4)	1	#113	851-053-1	Filter (K200)	2
#34	174-907-2	Relief Valve Spindle	1	#77	976-645-0	Spring (2.4×5) (0.3)	1	#114	909-442-0	Quick Exhaust (AQ240F-04-00)	1
#35	127-970-7	Relief Valve	1	#78	976-604-0	Spring (2.9×7.1) (0.45)	1	#115	935-240-0	Nylon Tube (18NY)	1
#36	144-270-0	Pressure Regulator Valve	1	#79	976-666-0	Spring (4.3×23) (0.55)	1	#116	935-350-0	Polyurethane Hose (F-1504)	1
#37	145-972-6	Accumulator	1	#80	976-788-0	Spring (3.5×25) (0.45)WPC	2	#117	990-333-0	O-Ring (JW1530-23)	1
#38	145-908-7	Accumulator Cover	1	#81	976-650-0	Spring (3.3×16) (0.45)Standard	1	ACCESSORIES			
#39	194-742-0	Oil Plug	1	#82	976-697-0	Spring (3.3×17) (0.45)Standard-Strong	1	#118	939-091-0	Allen Wrench (1.5mm)	1
#40	145-327-6	Anvil Front Spacer	1	#82-1	976-661-0	Spring (3.3×17) (0.4) (Black)Weak	1	#119	909-449-0	Speed Controller (AS1001F-04)	1
#41	191-790-1	Suspension Ring	1								
#42	129-842-6	Handle Protector	1								
#43	160-441-7	Angle Casing	1								

When ordering spare parts, please specify tool type, code number and part name.

Printed Japan



URYU SEISAKU, LTD. Osaka Japan

For further information, please contact at any time your nearest URYU distributor.

OKA-521-07-03-14-2001