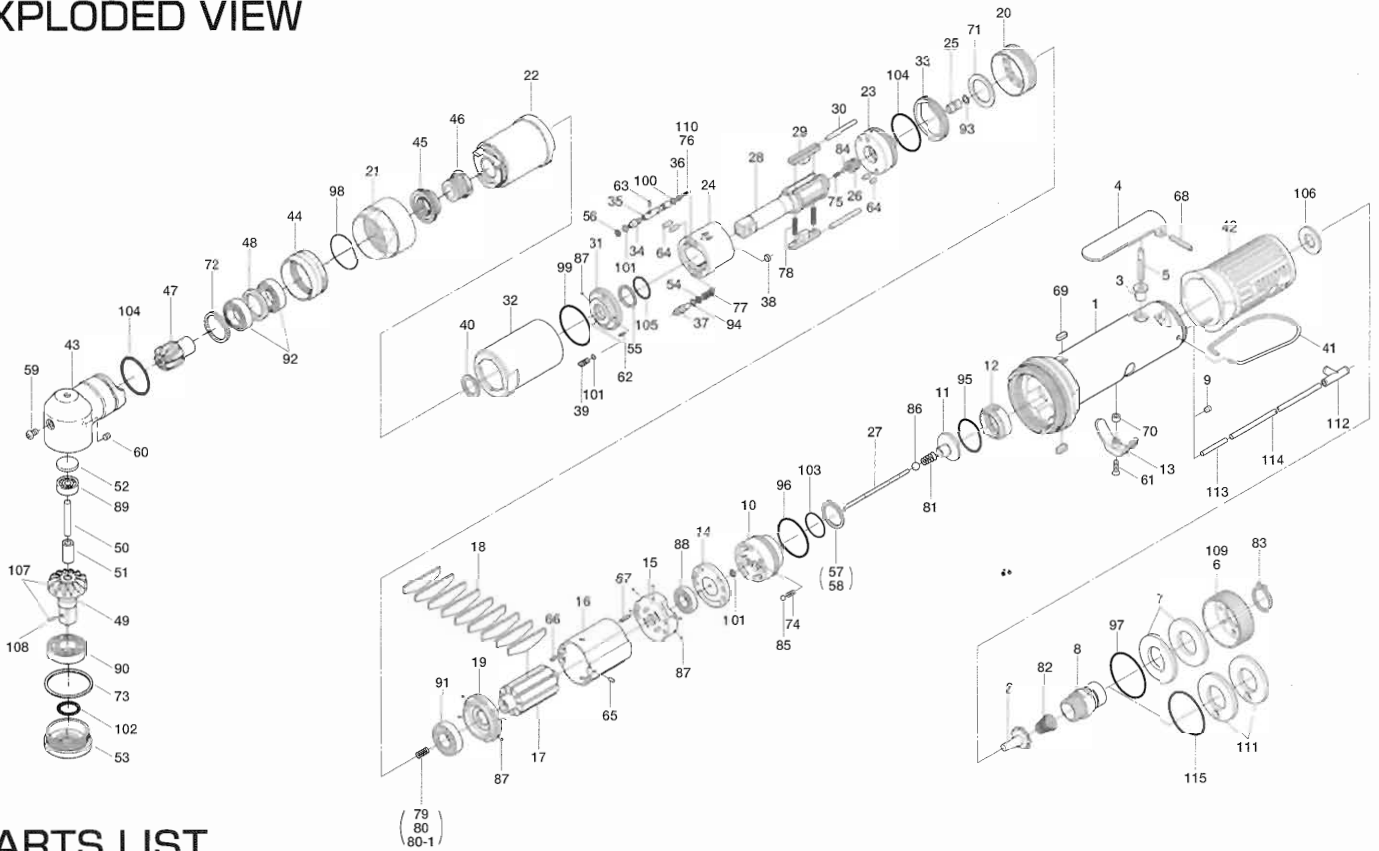


# ULT70CH SERIES OIL-PULSE WRENCHES

## EXPLODED VIEW



## PARTS LIST

Index No.	Code No.	Parts Name	Quantity	Index No.	Code No.	Parts Name	Quantity	Index No.	Code No.	Parts Name	Quantity
# 1	127-025-7	Casing	1	#44	127-382-7	Hammer Casing Nut	1	#84	981-001-0	Ball (3/32)	1
# 2	259-100-0	Valve	1	#45	160-797-7	Ball Bearing Setting Spindle	1	#85	981-002-0	Ball (1/8)	1
# 3	161-103-3	Valve Rod Bushing	1	#46	160-799-7	Ball Bearing Setting Spindle Collar	1	#86	981-003-0	Ball (5/32)	1
# 4	196-107-7	Valve Lever	1	#47	171-420-0	Driving Gear	1	#87	981-045-0	Ball (1.5mm)	10
# 5	128-104-8	Valve Rod	1	#48	179-423-6	Driving Gear Bushing Spacer	1	#88	982-014-0	Ball Bearing (607)	1
# 6	128-782-8	Exhaust Cover	1	#49	171-430-0	Driven Gear (O)	1	#89	982-021-0	Ball Bearing (626)	1
# 7	128-835-8	Filter (K200)	2	#50	171-431-0	Driven Gear Spindle	1	#90	982-103-0	Ball Bearing (6003)	1
# 8	128-091-8	Air Inlet Bushing	1	#51	171-432-0	Driven Gear Collar	1	#91	982-902-0	Ball Bearing (6901)	1
# 9	147-064-6	Filler	1	#52	562-391-7	Spindle Upper Plate	1	#92	982-904-0	Ball Bearing (6903)	2
#10	129-253-2	Shut-Off Valve Bushing	1	#53	171-488-0	Angle Casing Cover	1	#93	990-305-0	O-Ring (ARP568-003) (KS)	1
#11	145-254-6	Shut-Off Valve	1	#54	944-002-0	Supporting Ring (2.6×4.5×1)	1	#94	990-320-0	O-Ring (ARP568-003)	1
#12	129-684-6	Bumper Spacer	1	#55	944-013-0	Supporting Ring (P12)	1	#95	990-329-0	O-Ring (JW1530-19)	1
#13	161-212-3	Reverse Lever	1	#56	944-203-0	Supporting Ring (3.1×5×1)	1	#96	990-331-0	O-Ring (JW1530-21)	1
#14	128-291-8	Rear Plate Spacer	1	#57	944-216-0	Supporting Ring (14×20×1.85)	1	#97	990-603-0	O-Ring (28.5×1.3)	1
#15	129-285-2	Rear Plate	1	#58	944-218-0	Supporting Ring (14×20×1.9)	1	#98	990-605-0	O-Ring (25×1.45)	1
#16	129-286-6	Cylinder	1	#59	945-949-0	Hexagon Round Head Bolt (M5×6)	1	#99	990-334-0	O-Ring (JW1530-24)	1
#17	129-287-6	Rotor	1	#60	954-206-0	Allen Head Cone Point Screw (M5×6)	1	#100	990-621-0	O-Ring (3.8×1.8×1.0)	1
#18	129-288-6	Blade (PC)	9	#61	948-426-0	Allen Flush Head Screw (M3×12)	1	#101	990-900-0	O-Ring (SNS-2)	3
#19	128-289-8	Front Plate	1	#62	969-449-0	Pin (G) (3×6)	1	#102	990-156-0	O-Ring (SNS-16) (NTN)	1
#20	127-036-7	Hammer Casing Connector	1	#63	970-013-0	Pin (H) (1.5×4)	1	#103	990-914-0	O-Ring (SNS-16)	1
#21	180-081-4	Front Case Nut	1	#64	970-204-0	Pin (H) (3×6)	4	#104	990-923-0	O-Ring (SNS-26)	2
#22	127-439-7	Front Casing	1	#65	971-102-0	Pin (2×3.8)	1	#105	992-020-0	SU-Ring (Q12) (NTN)	1
#23	147-901-6	Rear Liner Plate	1	#66	973-008-0	Roll Pin (2×8)	1	#106	996-424-0	Urethane Packing (16×9×2)	1
#24	147-902-6	Liner	1	#67	973-018-0	Roll Pin (2×18)	1	#107	891-428-1	Driven Gear Assembly	1
#25	145-546-6	Piston	1	#68	973-122-0	Roll Pin (3×22)	1	#108	891-304-1	Socket Snap Pin Assembly	1
#26	145-929-6	Check Valve Cover	1	#69	974-008-0	Key (3×8)	2	<b>Parts for ULT70CHL</b>			
#27	129-130-6	Operating Rod (2.1×70.7)	1	#70	975-004-0	Spacer (5.5×3.1×2.7)	1	#109	129-782-0	Exhaust Cover	1
#28	147-319-6	Anvil	1	#71	975-752-0	Adjusting Spacer (15×10×1)	1	#110	976-836-0	Spring (2.9×7) (0.4)	1
#29	147-440-6	Driving Blade	2	#72	975-803-0	Adjusting Spacer (30×26×1)	1	<b>Parts for TM-Type</b>			
#30	147-974-6	Roller (2.5×28)	2	#73	975-875-0	Adjusting Spacer (44×40.2×1)	1	#111	851-053-1	Filter (K200)	2
#31	147-904-6	Front Liner Plate	1	#74	976-006-0	Spring (3×5) (0.4)	1	#112	909-442-0	Quick Exhaust (AQ240F-04-00)	1
#32	147-905-6	Liner Casing	1	#75	976-645-0	Spring (2.4×5) (0.3)	1	#113	935-240-0	Nylon Tube (18NY)	1
#33	147-906-6	Liner Casing Setter	1	#76	976-835-0	Spring (2.75×7.2) (0.4)	1	#114	935-350-0	Polyurethane Hose (F-1504)	1
#34	174-907-2	Relief Valve Spindle	1	#77	976-666-0	Spring (4.3×23) (0.55)	1	#115	990-333-0	O-Ring (JW1530-23)	1
#35	127-970-7	Relief Valve	1	#78	976-788-0	Spring (3.5×25) (0.45)WPC	2	<b>ACCESSORIES</b>			
#36	144-270-0	Pressure Regulator Valve	1	#79	976-650-0	Spring (3.3×16) (0.45)Standard	1	#116	939-091-0	Allen Wrench (1.5mm)	1
#37	145-972-6	Accumulator	1	#80	976-662-0	Spring (Yellow) (3.3×18) (0.45)Strong	1	#117	909-449-0	Speed Controller (AS1001F-04)	1
#38	145-908-7	Accumulator Cover	1	#80-1	976-661-0	Spring (Black) (3.3×17) (0.4)Weak	1				
#39	194-742-0	Oil Plug	1	#81	977-045-0	Cone Spring (4.0×4.6×9) (0.45)	1				
#40	145-327-6	Anvil Front Spacer	1	#82	977-227-0	Cone Spring (9×12×25) (0.8)	1				
#41	191-790-1	Suspension Ring	1	#83	979-358-0	Inner Snap Ring (ISTW-17)	1				
#42	129-842-6	Handle Protector	1								
#43	171-441-0	Angle Casing	1								

When ordering spare parts, please Specify tool type, code number and part name.

Printed Japan



**URYU SEISAKU, LTD.** Osaka Japan

For further information, please contact at any time your nearest URYU distributor.

OKA-522-07-03-19-2001