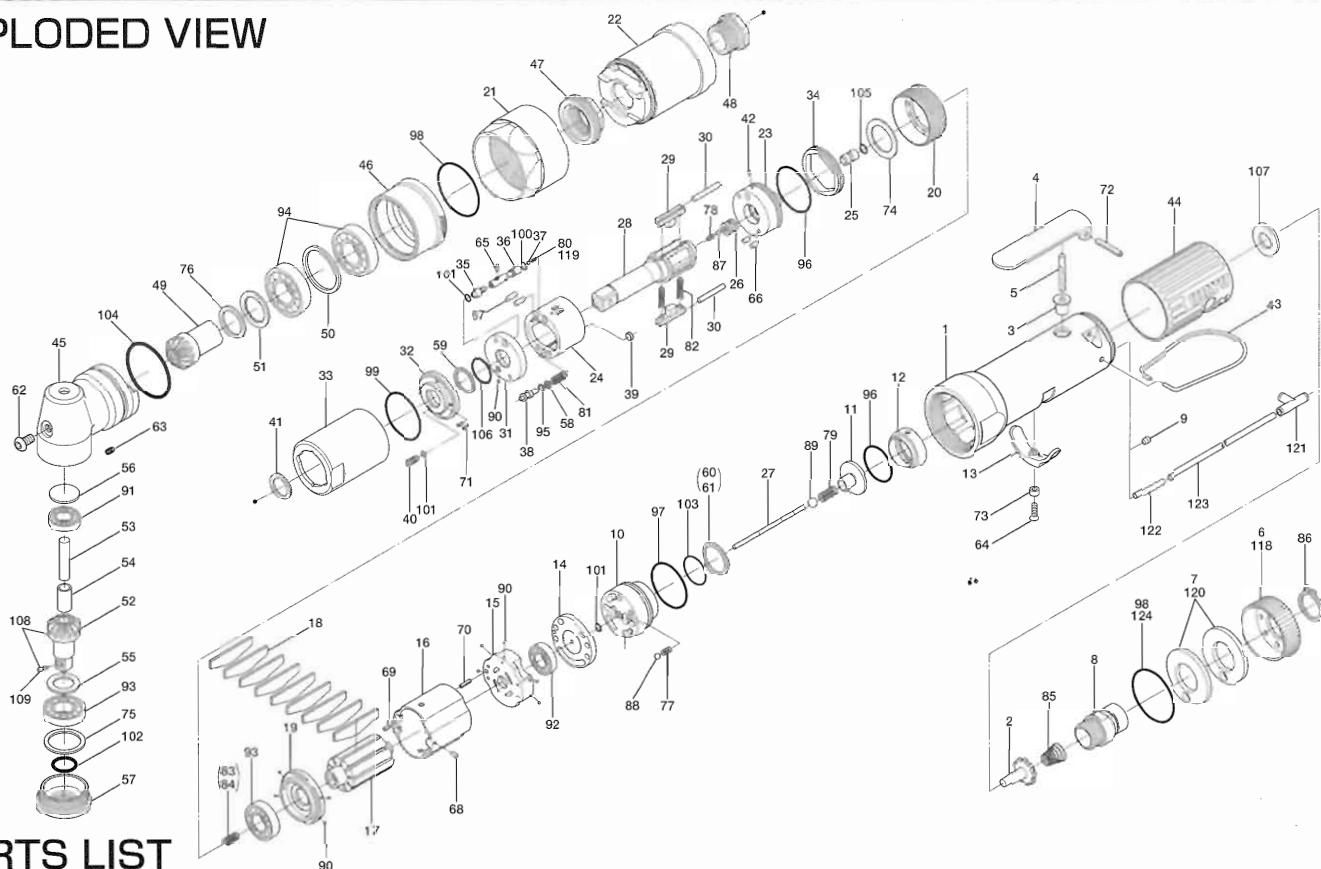


ULT60C SERIES OIL-PULSE WRENCHES

EXPLODED VIEW



PARTS LIST

Index No.	Code No.	Parts Name	Quantity	Index No.	Code No.	Parts Name	Quantity	Index No.	Code No.	Parts Name	Quantity
# 1	127-025-5	Casing	1	#44	129-842-3	Handle Cover	1	#85	977-227-0	Cone Spring(9×12×25)	1
# 2	259-100-0	Valve	1	#45	127-441-3	Angle Casing	1	#86	979-358-0	Inner Snap Ring(ISTW-17)	1
# 3	161-103-3	Valve Rod Bushing	1	#46	127-382-3	Hammer Casing Nut	1	#87	981-001-0	Ball(3/32)	1
# 4	196-107-7	Valve Lever	1	#47	127-797-3	Ball Bearing Setting Spindle	1	#88	981-002-0	Ball(1/8)	1
# 5	128-104-8	Valve Rod	1	#48	127-799-3	Ball Bearing Setting Spindle Nut	1	#89	981-003-0	Ball(5/32)	1
# 6	128-782-8	Exhaust Cover	1	#49	127-420-3	Driving Gear	1	#90	981-045-0	Ball(1.5mm)	10
# 7	128-835-8	Filter(K200)	2	#50	179-423-3	Driving Gear Bushing Spacer	1	#91	982-013-0	Ball Bearing(606)	1
# 8	128-091-8	Air Inlet Bushing	1	#51	179-425-3	Driving Gear Spacer	1	#92	982-014-0	Ball Bearing(607)	1
# 9	147-064-6	Filler	1	#52	008-430-1	Driven Gear(O)	1	#93	982-902-0	Ball Bearing(6901)	2
#10	129-253-2	Shut-Off Valve Bushing	1	#53	008-431-1	Driven Gear Spindle	1	#94	982-903-0	Ball Bearing(6902)	2
#11	145-254-6	Shut-Off Valve	1	#54	008-432-1	Driven Gear Spindle Collar	1	#95	990-320-0	O-Ring(ARP568-003)	1
#12	129-684-2	Bumper Spacer	1	#55	008-433-1	Driving Gear Spacer	1	#96	990-329-0	O-Ring(JW1530-19)	2
#13	161-212-3	Reverse Lever	1	#56	179-391-5	Spindle Upper Plate	1	#97	990-331-0	O-Ring(JW1530-21)	1
#14	128-291-8	Rear Plate Spacer	1	#57	179-488-3	Angle Casing Setter	1	#98	990-603-0	O-Ring(28.5×1.3)	2
#15	129-285-2	Rear Plate	1	#58	944-002-0	Supporting Ring(2.6×4.5×1)	1	#99	990-605-0	O-Ring(25×1.45)	1
#16	129-286-2	Cylinder	1	#59	944-212-0	Supporting Ring(12×16×1.5)	1	#100	990-621-0	O-Ring(3.8×1.8×1.0)	1
#17	145-287-6	Rotor	1	#60	944-216-0	Supporting Ring(14×20×1.85)	1	#101	990-900-0	O-Ring(SNS-2)	3
#18	147-288-2	Blade(PC)	9	#61	944-218-0	Supporting Ring(14×20×1.9)	1	#102	990-910-0	O-Ring(SNS-12.5)	1
#19	128-289-8	Front Plate	1	#62	945-949-0	Hexagon Round Head Bolt(M5×6)	1	#103	990-914-0	O-Ring(SNS-16)	1
#20	127-036-3	Hammer Casing Connector	1	#63	954-105-0	Allen Head Cone Point Screw(M4×5)	1	#104	990-915-0	O-Ring(SNS-29)	1
#21	127-081-3	Connecting Nut	1	#64	948-426-0	Allen Flush Head Screw(M3×12)	1	#105	990-305-0	O-Ring(ARP568-003)(KS)	1
#22	127-439-5	Front Casing	1	#65	970-013-0	Pin(H)(1.5×4)	1	#106	992-020-0	SU-Ring(Q12)(NTN)	1
#23	145-901-6	Rear Liner Plate	1	#66	970-130-0	Pin(H)(2.45×4.5)	2	#107	996-424-0	Packing(16×9×2)	1
#24	145-902-6	Liner	1	#67	970-131-0	Pin(H)(2.45×9.5)	2	#108	891-345-1	Driven Gear Assembly(P)	1
#25	145-546-6	Piston	1	#68	971-102-0	Pin(2×3.8)	1	#109	891-300-1	Socket Pin Assembly	1
#26	145-929-6	Check Valve Cover	1	#69	973-008-0	Roll Pin(2×8)	1	Parts for ULT60CL			
#27	129-130-2	Operation Rod(2.1×64.7)	1	#70	973-018-0	Roll Pin(2×18)	1	#118	129-782-0	Exhaust Cover	1
#28	145-319-6	Anvil	1	#71	973-040-0	Roll Pin(1.5×5)	2	#119	976-676-0	Spring(2.7×7.4)(0.4)	1
#29	145-440-6	Driving Blade	2	#72	973-122-0	Roll Pin(3×22)	1	Parts for TM-Type			
#30	145-974-6	Roller(2.5×26)	2	#73	975-004-0	Spacer(5.5×3.1×2.7)	1	#120	851-053-1	Filter(K200)	2
#31	145-973-6	Liner Casing Spacer	1	#74	975-752-0	Adjusting Spacer(15×10×t)	1	#121	909-442-0	Quick Exhaust(AQ240F-04-00)	1
#32	145-904-6	Front Liner Plate	1	#75	975-806-0	Adjusting Spacer(24×20×t)	1	#122	935-240-0	Nylon Tube(18NY)	1
#33	145-905-6	Liner Casing	1	#76	975-807-0	Adjusting Spacer(28×25×t)	1	#123	935-350-0	Polyurethane Hose(F1504)	1
#34	145-906-6	Liner Casing Setter	1	#77	975-006-0	Spring(3×5)(0.4)	1	#124	990-333-0	O-Ring(JW1530-23)	1
#35	145-907-6	Relief Valve Spindle	1	#78	976-653-0	Spring(2.4×5)(0.26)	1	ACCESSORIES			
#36	145-970-7	Relief Valve	1	#79	976-687-0	Spring(4.3×10)(0.45)	1	#125	939-091-0	Allen Wrench(1.5mm)	1
#37	144-270-0	Pressure Regulator Valve	1	#80	976-832-0	Spring(2.8×7.2)(0.45)	1	#126	909-449-0	Speed Controller(AS1001F-04)	1
#38	145-972-6	Accumulator	1	#81	976-665-0	Spring(4.3×19)(0.55)	1				
#39	145-908-7	Accumulator Cover	1	#82	976-792-0	Spring(3.5×21)(0.45)WPC	2				
#40	194-742-0	Oil Plug	1	#83	976-650-0	Spring(3.3×16)(0.45)	1				
#41	145-327-6	Anvil Front Spacer	1	#84	976-662-0	Spring(Yellow)(3.3×18)(0.45)	1				
#42	150-064-5	Plug	1								
#43	191-790-1	Suspension Ring	1								

When ordering spare parts, please Specify tool type, code number and part name.

Printed Japan



URYU SEISAKU, LTD. Osaka Japan

For further information, please contact at any time your nearest URYU distributor.

OKA-520-06-11-01-2001