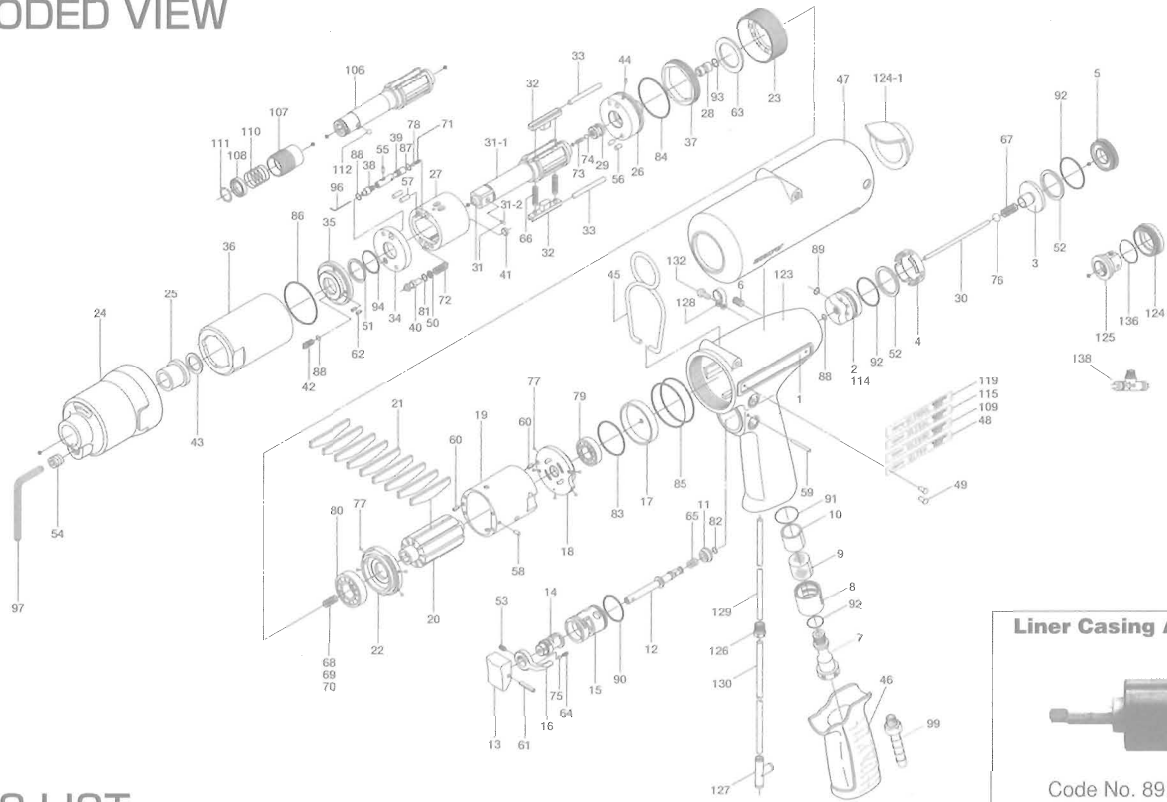


ULT50 SERIES OIL-PULSE WRENCHES

EXPLODED VIEW



PARTS LIST

Index No.	Code No.	Parts Name	Quantity	Index No.	Code No.	Parts Name	Quantity	Index No.	Code No.	Parts Name	Quantity
# 1	145-025-0	Handle	1	# 43	145-327-6	Anvil Front Spacer	1	# 88	990-900-0	O-Ring (SNS-2)	3
# 2	145-253-0	Shut-off Valve Bushing	1	# 44	150-064-5	Plug	1	# 89	990-901-0	O-Ring (SNS-3)	1
# 3	145-254-6	Shut-off Valve	1	# 45	174-790-0	Suspension Ring	1	# 90	990-912-0	O-Ring (SNS-14)	1
# 4	145-684-6	Cushion Spacer	1	# 46	147-842-2	Handle Cover	1	# 91	990-914-0	O-Ring (SNS-16)	1
# 5	145-019-6	Valve Cover	1	# 47	145-840-7	Casing Cover	1	# 92	990-916-0	O-Ring (SNS-18)	3
# 6	150-108-5	Valve Plug	1	# 48	145-924-0	Name Plate (ULT50)	1	# 93	990-305-0	O-Ring (ARP568-003KS)	1
# 7	147-091-2	Air Inlet Bushing	1	# 49	930-205-0	Pin (No.0x2.6)	2	# 94	992-020-0	SU-Ring (Q12) NTN	1
# 8	147-780-3	Exhaust Stack	1	# 50	944-002-0	Support Ring (2.6x4.5x1)	1	Parts for ULT50D			
# 9	147-042-2	Silencer	1	# 51	944-212-0	Support Ring (12x16x1.5)	1	#106	145-350-2	Driver Anvil	1
# 10	147-835-3	Filter (K200)	1	# 52	944-217-0	Support Ring (14x20x1.8)	2	#107	011-351-1	Bit Sleeve (1/8)	1
# 11	147-100-2	Valve	1	# 53	952-106-0	Allen Head Dog Point Screw (M4x6)	1	#108	011-352-1	Bit Spacer	1
# 12	142-104-6	Valve Rod	1	# 54	966-099-0	Allen Head Plug (NPT1/16) GDL	1	#109	145-924-2	Name Plate (ULT50D)	1
# 13	147-107-2	Valve Lever	1	# 55	970-013-0	Pin (H) (1.5x4)	1	#110	976-327-0	Spring (13.5x11x0.9)	1
# 14	147-210-2	Reverse Valve	1	# 56	970-130-0	Pin (H) (2.45x4.5)	2	#111	978-117-0	Snap Ring (11.7x1)	1
# 15	147-211-2	Reverse Valve Bushing	1	# 57	970-131-0	Pin (H) (2.45x9.5)	2	#112	981-002-0	Ball (1/8)	1
# 16	480-212-8	Reverse Lever	1	# 58	971-102-0	Pin (2x3.8)	1	Parts for ULT50L			
# 17	145-291-7	Rear Plate Spacer	1	# 59	971-123-0	Pin (2x23)	1	#114	145-253-3	Shut-off Valve Bushing	1
# 18	145-285-6	Rear Plate	1	# 60	973-008-0	Roll Pin (2x8)	2	#115	145-924-3	Name Plate	1
# 19	145-286-0	Cylinder	1	# 61	973-014-0	Roll Pin (2x14)	2	Parts for ULT50DL			
# 20	145-287-0	Rotor	1	# 62	973-040-0	Roll Pin (1.5x5)	2	#114	145-253-3	Shut-off Valve Bushing	1
# 21	145-288-0	Blade (PC)	9	# 63	975-752-0	Adjusting Spacer (15x10xt)	1	#119	145-924-4	Name Plate	1
# 22	145-289-6	Front Plate	1	# 64	976-006-0	Spring (3x5x0.4)	1	PARTS FOR (TM)-TYPE			
# 23	147-036-2	Hammer Casing Connector	1	# 65	976-457-0	Spring (7x12x0.9)	1	#123	851-030-1	Handle	1
# 24	145-439-0	Front Casing	1	# 66	976-791-0	Spring (3.3x21x0.4) WPC	2	#124	851-017-1	Valve Cover	1
# 25	190-328-6	Anvil Bushing	1	# 67	977-043-0	Cone Spring (4.1x4.7x9) (0.45)	1	#124-1	851-060-1	Cap	1
# 26	145-901-0	Rear Liner Plate	1	# 68	976-650-0	Spring (3.3x16x0.45) [Standard]	1	#125	851-050-1	Valve Spacer	1
# 27	145-902-0	Liner	1	# 69	976-662-0	Spring (3.3x18x0.45) Yellow [Strong]	1	#126	850-610-1	Connecting Screw	1
# 28	145-546-6	Piston	1	# 70	976-682-0	Spring (2.7x7.2x0.35) for ULT50	1	#127	909-442-0	Quick Exhaust (AQ240F-04-00)	1
# 29	145-929-6	Check Valve Cover	1	# 71	976-674-0	Spring (4.3x14x0.55)	1	#128	929-050-0	Coupling (φ 3)	1
# 30	145-130-0	Operating Rod (2.1x51.2)	1	# 72	976-653-0	Spring (2.4x5x0.26)	1	#129	935-240-0	Nylon Tube (18NY)	1
# 31	891-554-1	Anvil Assembly (P)	1	# 73	976-653-0	Spring (2.4x5x0.26)	1	#130	935-350-0	Polyurethane Hose (F-1504)	1
# 31-1	145-319-0	Anvil (O)	1	# 74	981-001-0	Ball (3/32)	1	#132	957-006-0	Cross Pan Head Screw (M3x6)	1
# 31-2	891-300-1	Socket Pin Assembly	1	# 75	981-002-0	Ball (1/8)	1	#136	990-916-0	O-Ring (SNS-18)	1
# 32	145-440-0	Driving Blade	2	# 76	981-003-0	Ball (5/32)	1	ACCESSORIES			
# 33	145-974-0	Roller (2.5x21)	2	# 77	981-045-0	Ball (1.5)	9	# 96	939-091-0	Allen Wrench (1.5x80x20)	1
# 34	145-973-6	Liner Casing Spacer	1	# 78	981-150-0	Ball (3)	1	# 97	939-105-0	Allen Wrench (4)	1
# 35	145-904-6	Front Liner Plate	1	# 79	982-014-0	Ball Bearing (607)	1	# 99	940-114-0	Air Hose Nipple (NPT1/4x3/8)	1
# 36	145-905-0	Liner Casing	1	# 80	982-902-0	Ball Bearing (6901)	1	#138	909-449-0	Speed Controller (AS1001F-04)	1
# 37	145-906-6	Liner Casing Cover	1	# 81	990-320-0	O-Ring (ARP568-003)	1				
# 38	145-907-6	Relief Valve Spindle	1	# 82	990-306-0	O-Ring (APR568-004H)	1				
# 39	145-970-0	Relief Valve	1	# 83	990-327-0	O-Ring (JW1530-18)	1				
# 40	145-972-6	Accumulator	1	# 84	990-329-0	O-Ring (JW1530-19)	1				
# 41	145-908-7	Accumulator Cover	1	# 85	990-337-0	O-Ring (JW1530-27)	2				
# 42	194-742-0	Oil Plug	1	# 86	990-605-0	O-Ring (25x1.45)	1				
				# 87	990-621-0	O-Ring (3.8x1.8x1.0)	1				

When ordering spare parts, please Specify tool type, code number and part name.

Printed Japan



URYU SEISAKU, LTD. Osaka Japan

For further information, please contact at any time your nearest URYU distributor.

OKA-481-03-12-01-2002