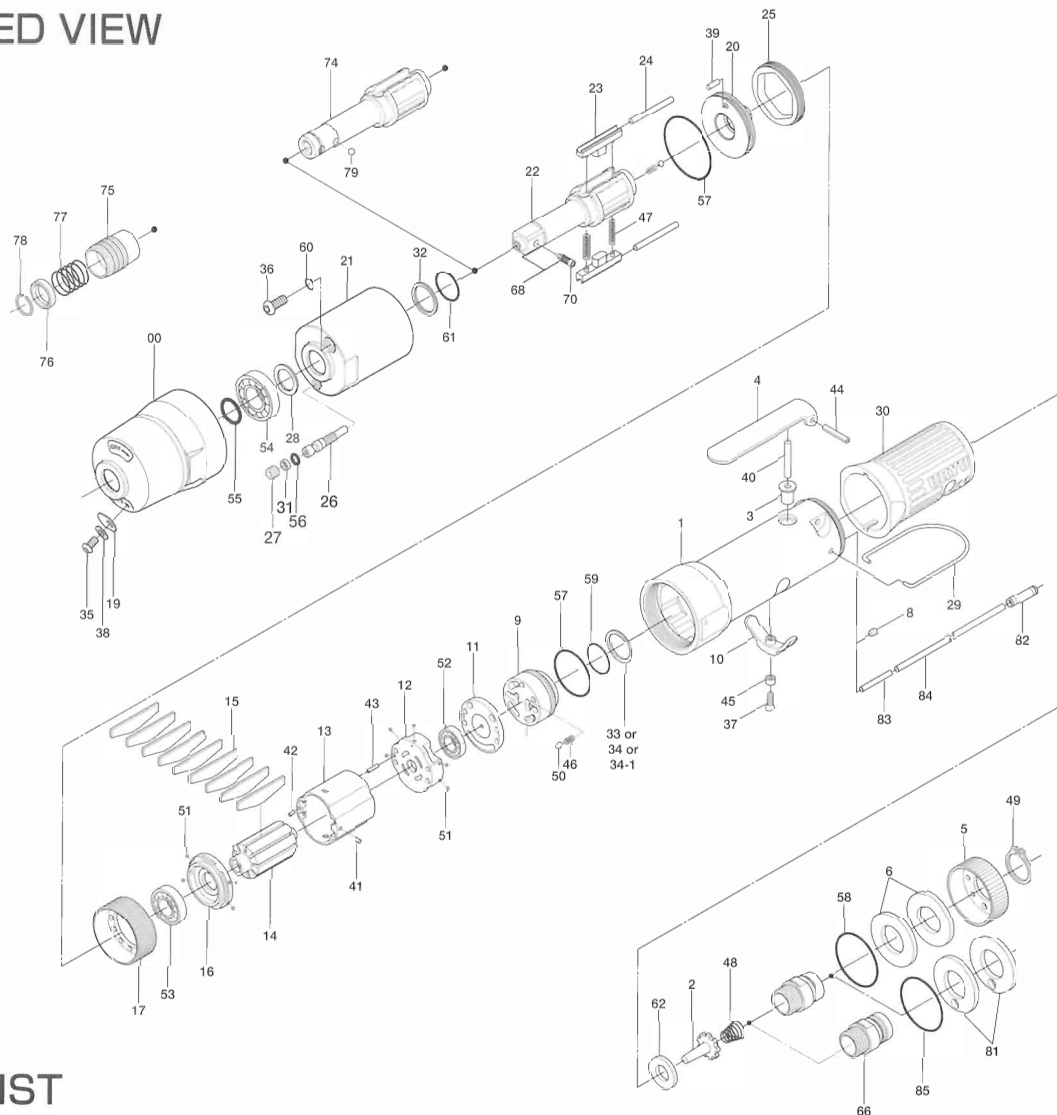


UL60S SERIES OIL-PULSE WRENCH

EXPLODED VIEW



PARTS LIST

Index No.	Code No.	Parts Name	Quantity	Index No.	Code No.	Parts Name	Quantity	Index No.	Code No.	Parts Name	Quantity
# 1	107-025-2	Casing	1	#32	944-212-0	Supporting Ring (12×16×1.5)	1	#59	990-912-0	O-Ring (SNS-14)	1
# 2	259-100-0	Valve	1	#33	944-216-0	Supporting Ring (14×20×1.85)	1	#60	990-971-0	O-Ring (SNS-3)(NOK)	1
# 3	161-103-3	Valve Rod Bushing	1	#34	944-218-0	Supporting Ring (14×20×1.9)	1	#61	992-020-0	SU-Ring (Q12)(NTN)	1
# 4	196-107-7	Valve Lever	1	#34-1	944-232-0	Supporting Ring (14×20×1.95)	1	#62	996-424-0	Packing (16×9×2)	1
# 5	128-782-8	Exhaust Cover	1	#35	945-935-0	Hexagon Round Head Bolt (M3×6)	1	#68	891-561-1	Socket Spindle Assembly (P)	1
# 6	128-835-8	Filter(K200)	2	#36	945-942-0	Hexagon Round Head Bolt (M4×6)	1	#70	891-300-1	Socket Snap Pin	1
#66	128-091-8	Air Inlet Bushing Plug	1	#37	948-426-0	Allen Flush Head Screw (M3×12)	1	PARTS FOR UL60SD			
# 8	147-064-6	Reverse Valve	1	#38	961-008-0	Flat Washer (3)	1	#74	143-350-7	Driver Anvil	1
# 9	106-210-8	Reverse Lever	1	#39	970-148-0	Pin (H) (2.5×3.8)	1	#75	011-351-1	Bit Sleeve (1/8)	1
#10	161-212-3	Rear Plate Spacer	1	#40	970-221-0	Pin (H) (3×21.5)	1	#76	011-352-1	Bit Spacer	1
#11	128-291-8	Rear Plate	1	#41	971-102-0	Pin (2×3.8)	1	#77	976-327-0	Spring (13.5×11)(0.9)	1
#12	129-285-2	Cylinder	1	#42	973-008-0	Roll Pin (2×8)	1	#78	978-117-0	Snap Ring (11.7×1)	1
#13	129-285-2	Rotor	1	#43	973-018-0	Roll Pin (2×18)	1	#79	981-002-0	Ball (1/8)	1
#14	145-287-6	Blade (P.C.)	9	#44	973-122-0	Roll Pin (3×22)	1	PARTS FOR (TM)-TYPE			
#15	147-283-2	Front Plate	1	#45	975-004-0	Spacer (5.5×3.1×2.7)	1	#81	851-053-1	Filter (K200)	2
#16	128-289-8	Hammer Casing Connector	1	#46	976-006-0	Spring (3×5)(0.4)	1	#82	933-250-0	One-Touch Connector (SLS-04)	1
#17	147-036-2	Front Casing	1	#47	976-78E-0	Spring (3.5×25) (0.45) (WPC)	2	#83	935-240-0	Nylon Tube (18NY)	1
#18	107-439-2	Regulator Valve Cover	1	#48	977-227-0	Cone Spring (9×12×25)(0.8)	1	#84	935-350-0	Polyurethane Hose (F-1504)	1
#19	143-243-8	Rear Liner Plate	1	#49	979-35E-0	Inner Snap Ring (ISTW-17)	1	#85	990-333-0	O-Ring (JW1530-23)	1
#20	143-901-6	Liner	1	#50	981-002-0	Ball (1/8)	1	ACCESSORIES			
#21	143-902-6	Anvil	1	#51	981-04E-0	Ball (1.5mm)	9	939-091-0	Allen Wrench 1.5(80×20)	1	
#22	143-319-6	Driving Blade	2	#52	982-014-0	Ball Bearing (607)	1	939-107-0	Allen Wrench 2	1	
#23	143-440-6	Roller (2.5×25)	2	#53	982-902-0	Ball Bearing (6901)	1	916-810-0	(+) Double Bit NO.2×75 (6.35H)	1	
#24	143-974-6	Liner Casing Cover	1	#54	982-922-0	Ball Bearing (6901ZZ)	1				
#25	143-906-3	Relief Valve	1	#55	990-012-0	O-Ring (P12.5)	1				
#26	143-970-6	Relief Valve Cover	1	#56	990-320-0	O-Ring (ARP568-003)	1				
#27	136-969-7	Anvil Front Spacer	1	#57	990-331-0	O-Ring (JW1530-21)	2				
#28	178-327-9	Suspension Bail	1	#58	990-603-0	O-Ring (28.5×1.3)	1				
#29	191-790-1	Handle Cover	1								
#30	129-842-3	Supporting Ring (2.6×4.5×1)	1								
#31	944-002-0										

When ordering spare parts, please Specify tool type, code number and parts name.

Printed in Japan



URYU SEISAKU, LTD. Osaka, Japan

For further information, please contact at any time your nearest URYU distributor.

OKA-518-07-09-28-501