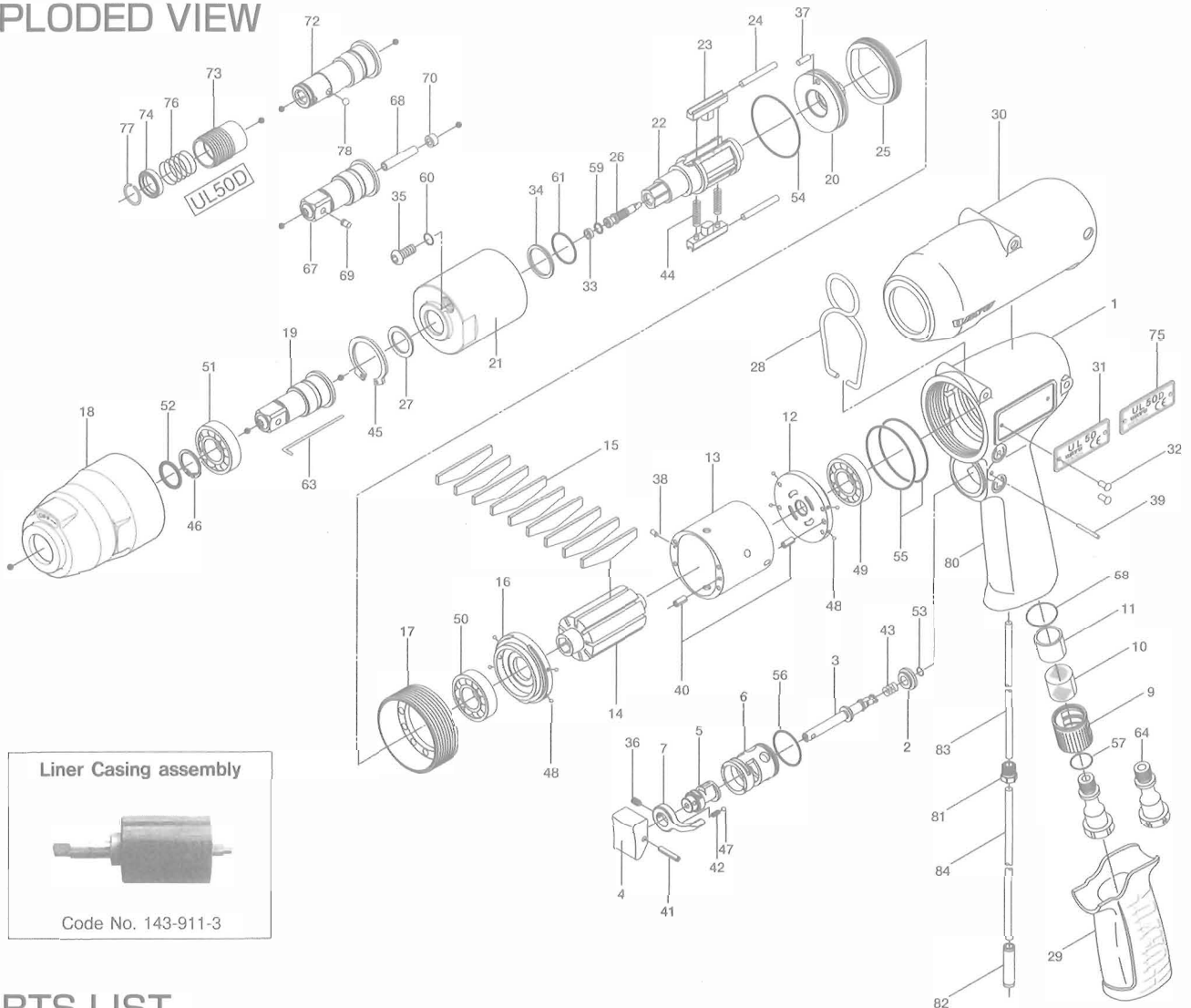


UL50(D) OIL-PULSE WRENCHES

EXPLODED VIEW



Liner Casing assembly



Code No. 143-911-3

PARTS LIST

Index No.	Code No.	Parts Name	Quantity	Index No.	Code No.	Parts Name	Quantity	Index No.	Code No.	Parts Name	Quantity
# 1	143-025-3	Handle	1	#30	143-840-3	Casing Protector	1	#59	990-970-0	O-Ring (SNS-2)	1
# 2	147-100-2	Valve	1	#31	143-924-3	Name Plate	1	#60	990-971-0	O-Ring (SNS-3)	1
# 3	147-104-2	Valve Rod	1	#32	930-205-0	Screw (No.0x2.6)	2	#61	992-020-0	SU-Ring (Q-12)(NTN)	1
# 4	147-107-2	Valve Lever	1	#33	944-002-0	Supporting Ring (2.6x4.5x1)	1	#67	891-558-1	Socket Spindle Assembly (P)	1
# 5	147-210-2	Reverse Valve	1	#34	944-212-0	Supporting Ring (12x16x1.5)	1	#68	891-559-1	Pipe	1
# 6	147-211-2	Reverse Valve Bushing	1	#35	945-942-0	Hexagon Round Head Bolt (M4x6)	1	#69	891-560-1	Socket Snap Pin	1
# 7	480-212-8	Reverse Lever	1	#36	952-106-0	Allen Head Dog Point Screw (M4x6)	1	#70	975-001-1	Spacer (6x2.8x3)	1
#64	147-091-2	Air Inlet Bushing	1	#37	970-145-0	Pin (H)(2.5x3.5)	1	PARTS FOR UL50D			
# 9	147-780-3	Exhaust Stack	1	#38	971-102-0	Pin (2x3.8)	1	#72	158-350-6	Driver Anvil	1
#10	147-042-2	Silencer	1	#39	971-123-0	Pin (2x23)	1	#73	011-351-1	Bit Sleeve (1/8)	1
#11	145-835-8	Filter (K100)	1	#40	973-008-0	Roll Pin (2x8)	2	#74	011-352-1	Bit Spacer	1
#12	147-285-2	Rear Plate	1	#41	973-014-0	Roll Pin (2x14)	1	#75	143-924-5	Name Plate	1
#13	143-286-3	Cylinder	1	#42	976-006-0	Spring (3x5)(0.4)	1	#76	976-327-0	Spring (13.5x11)(0.9)	1
#14	143-287-3	Rotor	1	#43	976-457-0	Spring (7x12)(0.9)	1	#77	978-117-0	Snap Ring (11.7x1.0)	1
#15	143-288-3	Blade (PC)	9	#44	976-792-0	Spring (3.5x21x0.45)WPC	2	#78	981-002-0	Ball (1/8)	1
#16	147-289-3	Front Plate	1	#45	979-327-0	Inner Snap Ring (IRTW-28)	1	PARTS FOR (TM)-TYPE			
#17	147-036-2	Hammer Casing Connector	1	#46	979-356-0	Inner Snap Ring (ISTW-15)	1	#80	851-038-1	Handle	1
#18	143-439-3	Front Casing	1	#47	981-002-0	Ball (1/8)	1	#81	850-610-1	Connecting Screw	1
#19	143-454-3	Socket Spindle	1	#48	981-045-0	Ball (1.5)	8	#82	933-250-0	One-Touch Connector (SLS-04)	1
#20	143-901-3	Rear Liner Plate	1	#49	982-014-0	Ball Bearing (607)	1	#83	935-240-0	Nylon Tube (18NY)	1
#21	143-902-3	Liner	1	#50	982-902-0	Ball Bearing (6901)	1	#84	935-350-0	Polyurethane Hose (F1504)	1
#22	143-319-3	Anvil	1	#51	982-923-0	Ball Bearing (6902ZZ)	1	ACCESSORIES			
#23	143-440-3	Driving Blade	2	#52	990-016-0	O-Ring (P16)	1	#63	939-091-0	Allen Wrench 1.5 (80x20)	1
#24	143-974-3	Roller (2.5x22)	2	#53	990-306-0	O-Ring (ARP-568-004) (H)	1	#79	916-810-0	(+) Double Bit No.2x75 (6.35H)	1
#25	143-906-3	Liner Casing Cover	1	#54	990-331-0	O-Ring (JW1530-21)	1				
#26	143-970-3	Relief Valve	1	#55	990-337-0	O-Ring (JW1530-27)	2				
#27	178-327-9	Anvil Front Spacer	1	#56	990-912-0	O-Ring (SNS-14)	1				
#28	174-790-0	Suspension Bail	1	#57	990-914-0	O-Ring (SNS-16)	1				
#29	147-842-2	Handle Cover	1	#58	990-916-0	O-Ring (SNS-18)	1				

When ordering spare parts, please Specify tool type, code number and parts name.

Printed in Japan



URYU SEISAKU, LTD. Osaka, Japan

For further information, please contact at any time your nearest URYU distributor.

OKA-476-03-12-25-2002