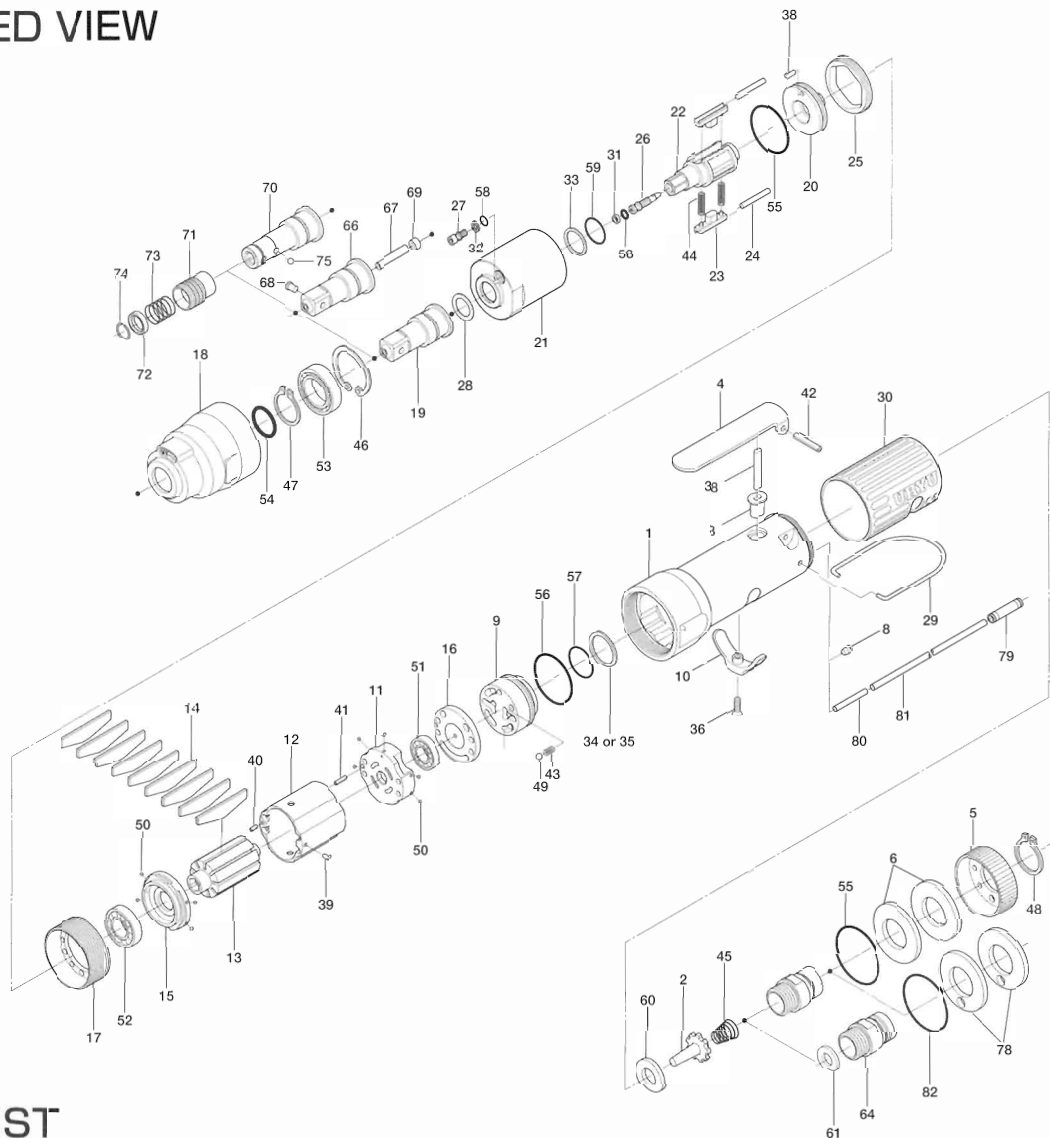


UL40S SERIES OIL-PULSE WRENCH

EXPLODED VIEW



PARTS LIST

Index No.	Code No.	Parts Name	Quantity	Index No.	Code No.	Parts Name	Quantity	Index No.	Code No.	Parts Name	Quantity
# 1	106-025-5	Handle	1	#30	128-842-5	Handle Cover	1	#58	990-970-0	O-Ring (SNS-2)(NOK)	2
# 2	259-100-0	Valve	1	#31	944-002-0	Supporting Ring (2.6×4.5×1)	1	#59	992-019-0	SU-Ring (Q10)(NTN)	1
# 3	161-103-3	Valve Rod Bushing	1	#32	944-003-0	Supporting Ring (3×5×1)	1	#60	996-409-0	Packing (12×2.5×2)	1
# 4	196-107-7	Valve Lever	1	#33	944-211-0	Supporting Ring (10×14×1.5)	1	#61	996-424-0	Packing (16×9×2)	1
# 5	128-782-5	Exhaust Cover	1	#34	944-216-0	Supporting Ring (14×20×1.85)	1	#66	891-565-1	Socket Spindle Assembly (P)	1
# 6	128-835-5	Filter (K200)	2	#35	944-218-0	Supporting Ring (14×20×1.9)	1	#67	891-559-1	Pipe	1
#64	128-091-8	Air Inlet Bushing	1	#36	948-426-0	Allen Flush Head Screw (M3×12)	1	#68	891-560-1	Socket Snap Pin	1
# 8	147-064-6	Plug	1	#37	970-148-0	Pin (H)(2.5×3.8)	1	#69	975-001-0	Spacer (6×2.8×3)	1
# 9	106-210-5	Reverse Valve	1	#38	970-220-0	Pin (H)(3×20)	1	PARTS FOR UL40SD			
#10	161-212-3	Reverse Lever	1	#39	971-102-0	Pin (2×3.8)	1	#70	143-350-2	Driver Anvil	1
#11	128-285-5	Rear Plate	1	#40	973-008-0	Roll Pin (2×8)	1	#71	011-351-1	Bit Sleeve (1/8)	1
#12	106-286-5	Cylinder	1	#41	973-018-0	Roll Pin (2×18)	1	#72	011-352-1	Bit Spacer	1
#13	143-287-0	Rotor	1	#42	973-122-0	Roll Pin (3×22)	1	#73	976-327-0	Spring (13.5×11)(0.9)	1
#14	143-288-0	Blade (PC)	9	#43	976-006-0	Spring (3×5)(0.4)	1	#74	978-117-0	Snap Ring (11.7×1)	1
#15	128-289-5	Front Plate	1	#44	976-803-0	Spring (2.8×18)(0.4)(WPC)	1	#75	981-002-0	Ball (1/8)	1
#16	128-291-5	Rear Plate Spacer	1	#45	977-227-0	Cone Spring (9×12×25)(0.8)	1	PARTS FOR (TM)-TYPE			
#17	143-036-0	Hammer Casing Connector	1	#46	979-324-0	Inner Snap Ring (IRTW-24)	1	#78	851-065-1	Filter (K200)	2
#18	143-439-0	Front Casing	1	#47	979-353-0	Inner Snap Ring (ISTW-12)	1	#79	933-250-0	One-Touch Connector (SLS-04)	1
#19	143-454-0	Socket Spindle	1	#48	979-358-0	Inner Snap Ring (ISTW-17)	1	#80	935-240-0	Nylon Tube (18NY)	1
#20	143-901-0	Rear Liner Plate	1	#49	981-002-0	Ball (1/8)	1	#81	935-350-0	Polyurethane Hose (F-1504)	1
#21	142-902-0	Liner	1	#50	981-045-0	Ball (1.5)	1	#82	990-331-0	O-Ring (JW1530-21)	1
#22	143-319-0	Anvil	1	#51	982-014-0	Ball Bearing (607)	1	ACCESSORIES			
#23	143-440-0	Driving Blade	2	#52	982-901-0	Ball Bearing (6900)	1	939-090-0	Allen Wrench 1.5 (55×55)	1	
#24	143-974-0	Roller (2.5×21)(C)	2	#53	982-922-0	Ball Bearing (6901ZZ)	1	916-810-0(+)	Double Bit No.2×75 (6.35H)	1	
#25	143-906-0	Liner Casing Cover	1	#54	990-012-0	O-Ring (P12.5)	1				
#26	143-970-3	Relief Valve	1	#55	990-329-0	O-Ring (JW1530-19)	2				
#27	194-742-3	Oil Plug	1	#56	990-331-0	O-Ring (JW1530-21)	1				
#28	143-327-0	Anvil Front Spacer	1	#57	990-912-0	O-Ring (SNS-14)	1				
#29	010-790-1	Suspension Bail	1								

When ordering spare parts, please Specify tool type, code number and parts name.

Printed in Japan



URYU SEISAKU, LTD. Osaka, Japan

For further information, please contact at any time your nearest URYU distributor.

OKA-516-07-09-28-501