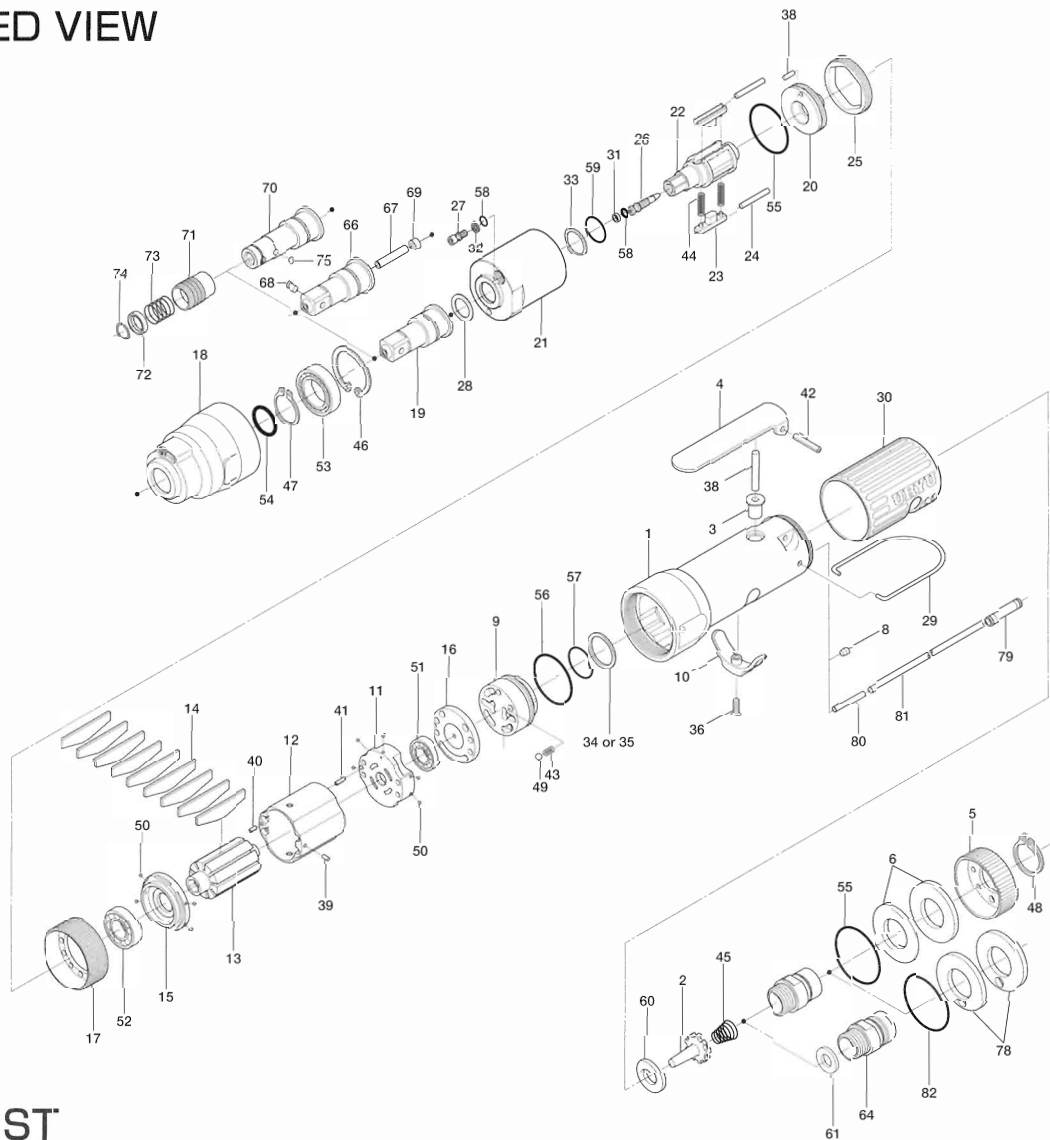


# UL30S SERIES OIL-PULSE WRENCH

## EXPLODED VIEW



## PARTS LIST

Index No.	Code No.	Parts Name	Quantity	Index No.	Code No.	Parts Name	Quantity	Index No.	Code No.	Parts Name	Quantity
# 1	106-025-5	Handle	1	#30	128-842-5	Handle Cover	1	#58	990-970-0	O-Ring (SNS-2)(NOK)	2
# 2	259-100-0	Valve	1	#31	944-002-0	Supporting Ring (2.6×4.5×1)	1	#59	992-019-0	SU-Ring (Q10)(NTN)	1
# 3	161-103-3	Valve Rod Bushing	1	#32	944-003-0	Supporting Ring (3×5×1)	1	#60	996-409-0	Packing (12×2.5×2)	1
# 4	196-107-7	Valve Lever	1	#33	944-211-0	Supporting Ring (10×14×1.5)	1	#61	996-424-0	Packing (16×9×2)	1
# 5	128-782-5	Exhaust Cover	1	#34	944-216-0	Supporting Ring (14×20×1.85)	1	#66	891-565-1	Socket Spindle Assembly (P)	1
# 6	128-835-5	Filter (K200)	2	#35	944-218-0	Supporting Ring (14×20×1.9)	1	#67	891-559-1	Pipe	1
#64	128-091-8	Air Inlet Bushing	1	#36	948-426-0	Allen Flush Head Screw (M3×12)	1	#68	891-560-1	Socket Snap Pin	1
# 8	147-064-6	Plug	1	#37	970-148-0	Pin (H)(2.5×3.8)	1	#69	975-001-0	Spacer (6×2.8×3)	1
# 9	106-210-5	Reverse Valve	1	#38	970-220-0	Pin (H)(3×20)	1	<b>PARTS FOR UL30SD</b>			
#10	161-212-3	Reverse Lever	1	#39	971-102-0	Pin (2×3.8)	1	#70	143-350-2	Driver Anvil	1
#11	128-285-5	Rear Plate	1	#40	973-008-0	Roll Pin (2×8)	1	#71	011-351-1	Bit Sleeve (1/8)	1
#12	106-286-5	Cylinder	1	#41	973-018-0	Roll Pin (2×18)	1	#72	011-352-1	Bit Spacer	1
#13	143-287-0	Rotor	1	#42	973-122-0	Roll Pin (3×22)	1	#73	976-327-0	Spring (13.5×11)(0.9)	1
#14	143-288-0	Blade (PC)	9	#43	976-006-0	Spring (3×5)(0.4)	1	#74	978-117-0	Snap Ring (11.7×1)	1
#15	128-289-5	Front Plate	1	#44	976-803-0	Spring (2.8×18)(0.4)(WPC)	1	#75	981-002-0	Ball (1/8)	1
#16	128-291-5	Rear Plate Spacer	1	#45	977-227-0	Cone Spring (9×12×25)(0.8)	1	<b>PARTS FOR (TM)-TYPE</b>			
#17	143-036-0	Hammer Casing Connector	1	#46	979-324-0	Inner Snap Ring (IRTW-24)	1	#78	851-065-1	Filter (K200)	2
#18	143-439-0	Front Casing	1	#47	979-353-0	Inner Snap Ring (ISTW-12)	1	#79	933-250-0	One-Touch Connector (SLS-04)	1
#19	143-454-0	Socket Spindle	1	#48	979-358-0	Inner Snap Ring (ISTW-17)	1	#80	935-240-0	Nylon Tube (18NY)	1
#20	143-901-0	Rear Liner Plate	1	#49	981-002-0	Ball (1/8)	1	#81	935-350-0	Polyurethane Hose (F-1504)	1
#21	142-902-8	Liner	1	#50	981-045-0	Ball (1.5)	9	#82	990-331-0	O-Ring (JW1530-21)	1
#22	143-319-0	Anvil	1	#51	982-014-0	Ball Bearing (607)	1	<b>ACCESSORIES</b>			
#23	143-440-0	Driving Blade	2	#52	982-901-0	Ball Bearing (6900)	1	939-090-0	Allen Wrench 1.5 (55×55)	1	
#24	143-974-0	Roller (2.5×21)(C)	2	#53	982-922-0	Ball Bearing (6901ZZ)	1	916-810-0(+)	Double Bit No.2×75 (6.35H)	1	
#25	143-906-0	Liner Casing Cover	1	#54	990-012-0	O-Ring (P12.5)	1				
#26	143-970-3	Relief Valve	1	#55	990-329-0	O-Ring (JW1530-19)	2				
#27	194-742-3	Oil Plug	1	#56	990-331-0	O-Ring (JW1530-21)	1				
#28	143-327-0	Anvil Front Spacer	1	#57	990-912-0	O-Ring (SNS-14)	1				
#29	010-790-1	Suspension Bail	1								

When ordering spare parts, please Specify tool type, code number and parts name.

Printed in Japan



**URYU SEISAKU, LTD.** Osaka, Japan

For further information, please contact at any time your nearest URYU distributor.

OKA-515-07-09-28-501