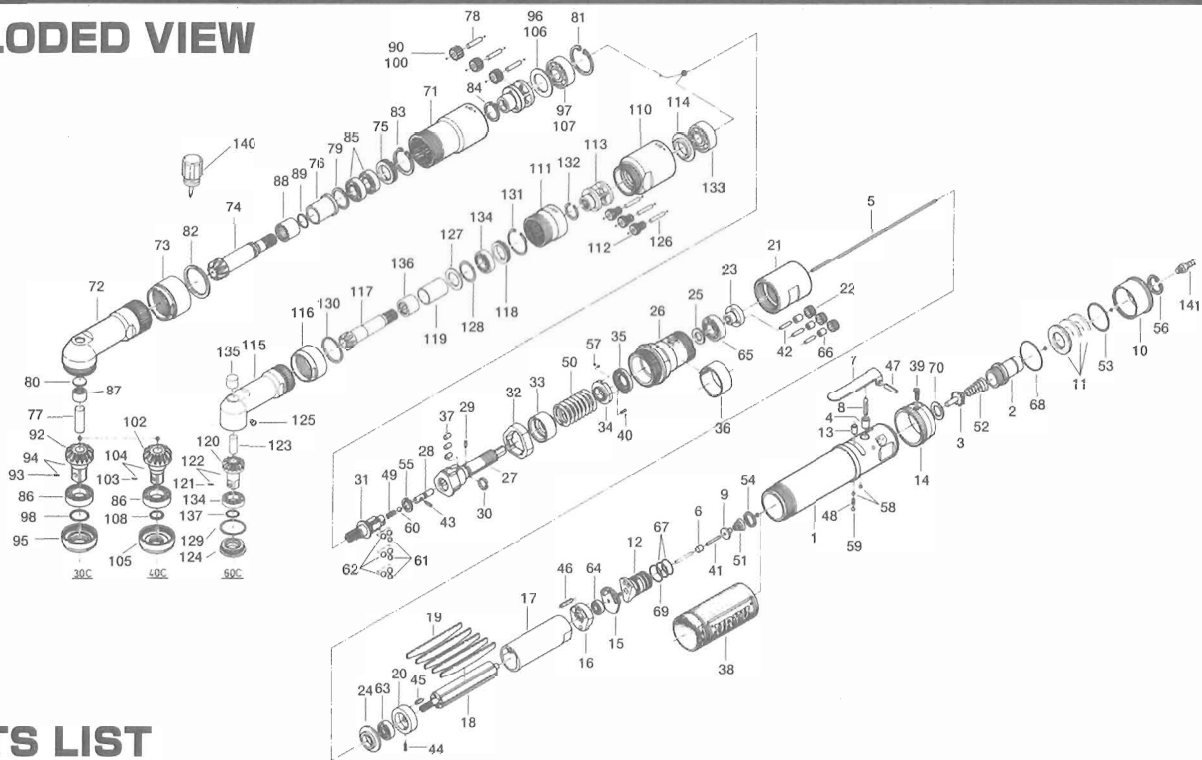


UAN-701R-30C, 40C&60C Torque Control Angle Nutrunners

EXPLODED VIEW



PARTS LIST

Index No.	Code No.	Parts Name	Quantity	Index No.	Code No.	Parts Name	Quantity	Index No.	Code No.	Parts Name	Quantity
# 1	269-025-5	Casing	1	#52	977-275-0	Cone Spring (11×14×32)	1	#97	982-201-0	Ball Bearing (6201)	1
# 2	259-091-6	Air Inlet Bushing	1	#53	978-337-0	Snap Ring (34×1.4×13)	1	#98	990-156-0	O-Ring (P16NTN)	1
# 3	259-100-6	Valve	1	#54	979-008-0	Inner Snap Ring (15)	1	Parts for UAN-701R-40C			
# 4	553-103-1	Valve Rod Bushing	1	#55	979-351-0	Inner Snap Ring (ISTW-10)	1	# 31	269-346-6	Cam	1
# 5	269-104-5	Valve Rod	1	#56	979-358-0	Inner Snap Ring (ISTW-17)	1	#100	612-470-2	First Planet Gear	3
# 6	444-106-8	Valve Rod Cap	1	#57	981-001-0	Ball (3/32)	2	#101	259-485-6	Second Gear Cage	1
# 7	196-107-7	Valve Lever	1	#58	981-002-0	Ball (1/8)	2	#102	269-430-6	Driven Gear (O)	1
# 8	259-114-0	Valve Spindle	1	#59	981-003-0	Ball (5/32)	1	#103	891-300-1	Socket Retainer Pin Assy	1
# 9	259-254-6	Shut-Off Valve	1	#60	981-004-0	Ball (3/16)	1	#104	895-043-1	Driven Gear Assy (P)	1
#10	259-780-6	Exhaust Stack	1	#61	981-005-0	Ball (7/32)	3	#105	259-488-6	Angle Casing Setter	1
#11	259-835-6	Filter	3	#62	981-006-0	Ball (1/4)	1	#106	975-245-0	Spacer (32×24×2.5H)	1
#12	269-210-5	Reverse Valve	1	#63	982-021-0	Ball Bearing (626)	1	#107	982-102-0	Ball Bearing (6002)	1
#13	268-211-6	Reverse Valve Bushing	1	#64	982-033-0	Ball Bearing (696)	1	#108	990-910-0	O-Ring (SNS-12.5)	1
#14	268-212-6	Reverse Lever	1	#65	982-101-0	Ball Bearing (6001)	1	Parts for UAN-701R-60C			
#15	268-291-7	Rear Plate Spacer	1	#66	988-590-0	Needle Roller Bearing (KT367N)	3	# 31	269-346-7	Cam	1
#16	259-285-6	Rear Plate	1	#67	990-590-0	O-Ring (17×1)	2	#110	269-381-7	Cam Casing	1
#17	269-286-5	Cylinder	1	#68	990-603-0	O-Ring (28.5×1.3)	1	#111	259-466-0	Second Internal Gear	1
#18	269-287-5	Rotor	1	#69	990-914-0	O-Ring (SNS-16)	1	#112	268-471-9	Second Planet Gear	3
#19	269-288-5	Blade (PC)	5	#70	996-433-0	Urethane Packing (19×12×1)	1	#113	268-485-9	Second Gear Cage	1
#20	269-289-5	Front Plate	1	Parts for UAN-701R-30C & 40C				#114	269-487-7	Second Gear Cage Spacer	1
#21	269-465-5	First Internal Gear	3	#71	269-466-5	Second Internal Gear	1	#115	268-441-6	Angle Casing	1
#22	259-470-6	First Planet Gear	1	#72	269-441-5	Angle Casing	1	#116	259-081-0	Locking Nut	1
#23	259-480-6	First Gear Cage	1	#73	259-081-6	Locking Nut	1	#117	268-420-6	Driving Gear	1
#24	259-807-6	Spacer	1	#74	269-420-5	Driving Gear	1	#118	259-426-0	Driving Gear Spindle Retainer Screw	1
#25	408-483-0	Gear Cage Spacer	1	#75	259-426-0	Driving Gear Spindle Retainer Screw	1	#119	259-567-2	Bushing	1
#26	269-369-5	Clutch Casing	1	#76	259-427-6	Driving Gear Spindle Retainer Spacer	1	#120	268-430-6	Driven Gear (O)	1
#27	269-654-5	Cam Guide	1	#77	972-360-1	Roller Pin (10×28)	1	#121	891-300-1	Socket Retainer Pin Assy	1
#28	268-318-6	Pilot Pin	1	#78	972-120-0	Roller Pin (4×19)	3	#122	895-044-1	Driven Gear Assy (P)	1
#29	471-764-7	Notch Pin	1	#79	975-806-0	Adjusting Spacer (24×20×t)	1	#123	972-320-0	Roller Pin (8×20)	1
#30	471-670-7	Band	1	#80	975-596-0	Round Plate (14×1)	1	#124	268-488-6	Angle Casing Setter	1
#32	269-375-5	Cam Ring	1	#81	979-025-0	Inner Snap Ring (32)	1	#125	968-130-0	Grease Cup (3/16)	1
#33	269-164-5	Spring Setter	1	#82	979-194-0	Outer Snap Ring (32)	1	#126	972-107-0	Roller Pin (3.5×21.8F)	3
#34	269-562-5	Stopper	1	#83	979-207-0	Snap Ring (30)	1	#127	975-166-0	Spacer (24×16×1.5)	1
#35	259-257-6	Regulator Screw	1	#84	979-358-0	Inner Snap Ring (ISTW-17)	1	#128	975-806-0	Adjusting Spacer (24×20×t)	1
#36	259-670-0	Eland	1	#85	982-902-0	Ball Bearing (6901)	2	#129	975-807-0	Adjusting Spacer (28×25×t)	1
#37	269-651-5	Cam Roller	3	#86	982-904-0	Ball Bearing (6903)	1	#130	978-308-0	Snap Ring (30×1.6)	1
#38	269-840-5	Casing Protector	1	#87	988-388-0	Needle Roller Bearing (F1010)	1	#131	979-206-0	Snap Ring (28)	1
#39	345-001-0	Allen Head Bolt (M3×10)	1	#88	988-389-0	Needle Roller Bearing (F1616)	1	#132	979-358-0	Inner Snap Ring (ISTW-17)	1
#40	970-091-0	Pin (H) (2×4.5)	1	#89	990-910-0	O-Ring (SNS-12.5)	1	#133	982-102-0	Ball Bearing (6002)	1
#41	970-104-0	Pin (H) (2×21.5)	1	Parts for UAN-701R-30C				#134	982-902-0	Ball Bearing (6901)	2
#42	972-094-0	Roller Pin (3×14)	3	#31	269-346-5	Cam	1	#135	988-480-0	Needle Roller Bearing (BK-810)	1
#43	969-470-0	Pin (E) (2×8)	1	#90	269-471-5	Second Planet Gear	3	#136	988-393-0	Needle Roller Bearing (NF-1416)	1
#44	973-007-0	Roll Pin (2×7)	1	#91	269-485-5	Second Gear Cage	1	#137	990-910-0	O-Ring (SNS-12.5)	1
#45	973-108-0	Roll Pin (3×8)	1	#92	269-430-5	Driven Gear (O)	1	ACCESSORIES			
#46	973-116-0	Roll Pin (3×16)	1	#93	891-304-1	Socket Retainer Pin Assy	1	#140	939-402-0	Manual Driver (No.2)	1
#47	973-124-0	Roll Pin (3×24)	1	#94	895-042-1	Driven Gear Assy (P)	1	#141	940-114-0	Air Hose Nipple (NPT 1/4×3/8)	1
#48	976-022-0	Spring (3×5.5×0.4)	1	#95	269-488-5	Angle Casing Setter	1				
#49	976-058-0	Spring (4.5×11×0.4)	1	#96	975-249-0	Spacer (32×21×1.5H)	1				
#50	976-579-0	Spring (26×43.5×4.0)	1								
#51	977-072-0	Cone Spring (5.5×15×14)	1								

When ordering spare parts, please specify tool type, code number and part name.

Printed Japan



URYU SEISAKU, LTD. Osaka Japan