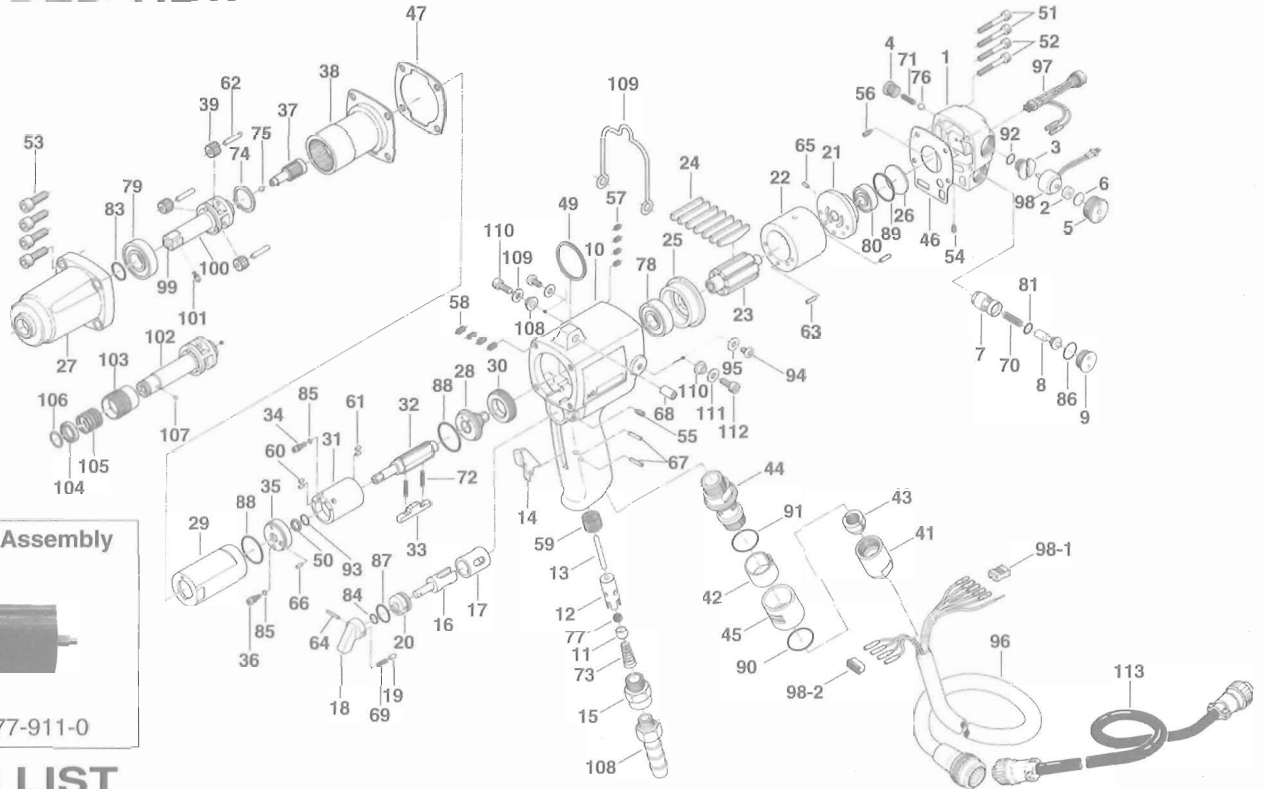


U-50(D) EC OIL-PULSE WRENCH

EXPLODED VIEW



Liner Casing Assembly



Code. No. 177-911-0

PARTS LIST

Index. No.	Code No.	Parts Name	Quantity	Index. No.	Code No.	Parts Name	Quantity	Index. No.	Code No.	Parts Name	Quantity
# 1	193-012-5	Head Cover	1	# 44	177-780-0	Silencer	1	# 85	990-319-0	O-Ring (ARP568-002)	2
# 2	193-120-6	Valve Packing Spacer	1	# 45	193-782-6	Exhaust Cover	1	# 86	990-908-0	O-Ring (SNS-10)	1
# 3	193-147-6	Stop Valve Bushing	1	# 46	193-854-5	Handle Packing	1	# 87	990-910-0	O-Ring (SNS-12.5)	1
# 4	193-148-6	Stop Valve Cover	1	# 47	190-867-6	Front Casing Packing	1	# 88	990-916-0	O-Ring (SNS-18)	2
# 5	193-149-6	Stop Valve Plug	1	# 49	004-790-2	Suspension Ring	1	# 89	990-918-0	O-Ring (SNS-20)	1
# 6	193-872-6	Valve Packing	1	# 50	944-006-0	Supporter Ring (5.85×9.1×1)	1	# 90	990-919-0	O-Ring (SNS-22)	1
# 7	193-253-5	Shut-Off Valve Bushing	1	# 51	945-030-0	Allen Head Bolt (M4×30)	2	# 91	990-921-0	O-Ring (SNS-22.4)	1
# 8	177-254-0	Shut-Off Valve	1	# 52	945-035-0	Allen Head Bolt (M4×35)	2	# 92	990-905-0	O-Ring (SNS-7)	1
# 9	193-927-5	Shut-Off Valve Cover	1	# 53	945-120-0	Allen Head Bolt (M5×20)	4	# 93	990-952-0	O-Ring (P6) (NOK)	1
# 10	177-025-0	Casing	1	# 54	952-006-0	Allen Head Dog Point Screw (M3×6)	1	# 94	945-949-0	Hexagon Round Head Bolt (M5×6)	2
# 11	185-100-1	Main Valve	1	# 55	952-108-0	Allen Head Dog Point Screw (M4×8)	1	# 95	961-012-0	Flat Washer (5MM)	2
# 12	063-102-3	Valve Bushing	1	# 56	954-005-0	Allen Head Cone Point Screw (M3×5)	1	# 96	909-751-0	Joint Cable Assembly	1
# 13	193-104-6	Valve Rod	1	# 57	965-006-0	Heli-Sert (M4×1.5D)	1	# 97	909-754-0	LED Lamp Assembly	1
# 14	187-107-1	Throttle Trigger	1	# 58	965-011-0	Heli-Sert (M5×1.5D)	4	# 98	909-753-0	Solenoid Valve Assembly	1
# 15	185-091-7	Air Inlet Bushing	1	# 59	965-073-0	Heli-Sert (UNF5/8) (N6)	4	#98-1	909-731-0	Connector (171822-4)	1
# 16	194-210-0	Reverse Valve	1	# 60	972-010-0	Roller Pin (1.5×6.8)	2	#98-2	909-733-0	Connector (RF-06)	1
# 17	194-211-0	Reverse Valve Bushing	1	# 61	972-011-0	Roller Pin (1.5×4.8)	2	PARTS FOR U-50EC			
# 18	194-212-0	Reverse Lever	1	# 62	972-095-0	Roller Pin (3×15)	3	# 99	891-339-1	Socket Spindle Assembly (P)	1
# 19	054-220-1	Reverse Lever Notch	1	# 63	973-008-0	Roll Pin (2×8)	2	# 100	177-454-0	Socket Anvil (O)	1
# 20	194-222-0	Reverse Valve Setter	1	# 64	973-047-0	Roll Pin (1.5×14)	1	# 101	891-300-1	Socket Pin Assembly (3/8)	1
# 21	177-285-0	Rear Plate	1	# 65	973-066-0	Roll Pin (2.5×6)	1	PARTS FOR U-50DEC			
# 22	177-286-0	Cylinder	1	# 66	969-449-0	Pin (G) (3×6)	1	# 102	177-350-3	Driver Anvil	1
# 23	177-287-0	Rotor	1	# 67	973-114-0	Roll Pin (3×14)	2	# 103	011-351-1	Bit Sleeve	1
# 24	177-288-2	Rotor Blade (PC)	7	# 68	973-340-0	Roll Pin (6×10)	1	# 104	011-352-1	Bit Spacer	1
# 25	177-289-0	Front Plate	1	# 69	976-025-0	Spring (3×8.5) (0.5)	1	# 105	976-327-0	Spring (13.5×11) (0.9)	1
# 26	193-291-6	Rear Plate Spacer	1	# 70	976-228-0	Spring (4.7×14) (0.4)	1	# 106	978-117-0	Snap Ring (11.7×1.0)	1
# 27	177-439-0	Front Casing	1	# 71	976-240-0	Spring (4.3×14) (0.4)	1	# 107	981-002-0	Ball (1/8)	1
# 28	177-901-0	Rear Liner Plate	1	# 72	976-242-0	Spring (2.8×13.5) (0.4)	1	STANDARD ACCESSORIES			
# 29	196-905-6	Liner Casing	1	# 73	977-175-0	Cone Spring (7.5×10.3×22)	1	# 108	940-114-0	Air Hose Nipple (NPT1/4×3/8)	1
# 30	196-906-6	Liner Casing Setter	1	# 74	979-113-0	Outer Snap Ring (16)	1	OPTIONAL ACCESSORIES			
# 31	196-902-6	Liner	1	# 75	981-003-0	Ball (5/32)	1	# 109	193-790-6	Suspension Ball (OPTION)	1
# 32	196-319-6	Anvil	1	# 76	981-024-0	Polyurethane Ball (5)	1	# 110	193-791-6	Suspension Receiver	2
# 33	177-440-0	Driving Blade	1	# 77	981-208-0	Steel Ball (5/16) Black	1	# 111	193-792-6	Suspension Plate	2
# 34	196-970-6	Release Valve	1	# 78	982-100-0	Ball Bearing (6000)	1	# 112	945-112-0	Allen Head Bolt (M5×12)	2
# 35	196-904-6	Front Liner Plate	1	# 79	982-101-0	Ball Bearing (6001)	1	# 113	909-752-0	Sensor Cable Assy (3E5)	1
# 36	196-742-6	Oil-Plug	1	# 80	982-401-0	Ball Bearing (EE-2)	1				
# 37	177-446-0	Spindle Gear	1	# 81	990-003-0	O-Ring (P5)	1				
# 38	177-465-0	Internal Gear with Strain Gauges	1	# 83	990-012-0	O-Ring (P12.5)	1				
# 39	177-470-0	Planet Gear	3	# 84	990-203-0	O-Ring (JW516-3)	1				
# 41	182-018-8	Cable Cap	1								
# 42	193-042-5	Filter	1								
# 43	182-562-8	Stopper	1								

When ordering spare parts, please specify tool type, code number and parts name.

Printed in Japan



URYU SEISAKU, LTD. Osaka, Japan

OKA-361-00-07-15-2003