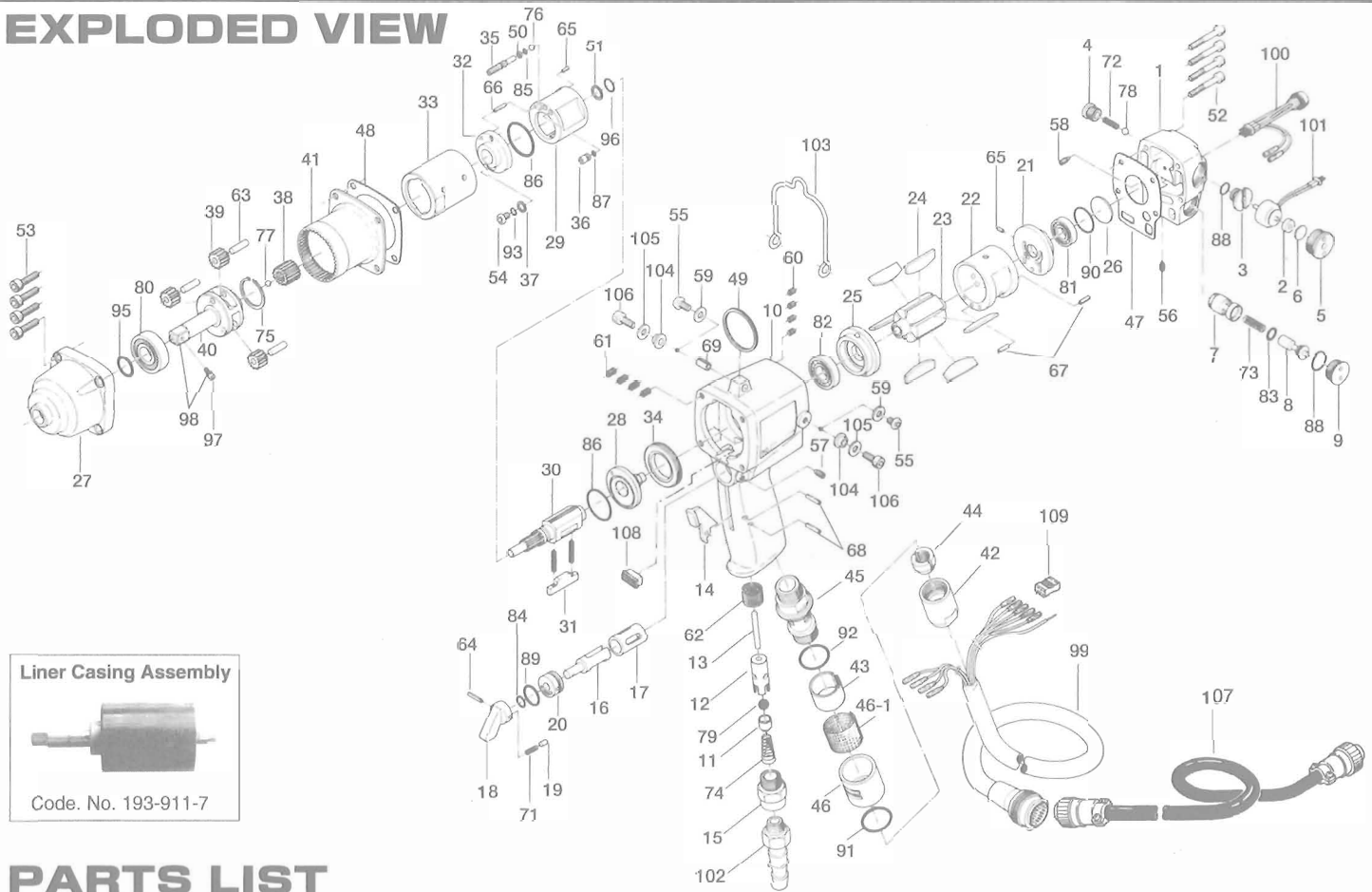


# U-100EC OIL-PULSE WRENCH

## EXPLODED VIEW



## PARTS LIST

Index No.	Code No.	Parts Name	Quantity	Index No.	Code No.	Parts Name	Quantity	Index No.	Code No.	Parts Name	Quantity
# 1	193-012-7	Casing Cover	1	# 40	193-454-7	Socket Spindle (O)	1	# 73	976-114-0	Spring (6X18X0.55)	1
# 2	193-120-6	Valve Packing Spacer	1	# 41	193-465-7	Internal Gear	1	# 74	977-175-0	Cone Spring (7.5X10.3X22)	1
# 3	193-147-6	Stop Valve Bushing	1	# 42	182-018-8	Cap	1	# 75	979-119-0	Outer Snap Ring (22)	1
# 4	193-148-6	Stop Valve Cover	1	# 43	181-099-0	Noise Filter	1	# 76	981-003-0	Ball (5/32)	1
# 5	193-149-6	Stop Valve Plug	1	# 44	182-562-8	Stopper	1	# 77	981-006-0	Ball (1/4)	1
# 6	193-872-6	Valve Packing	1	# 45	193-780-7	Silencer	1	# 78	981-024-0	Polyurathane Ball (5)	1
# 7	193-253-7	Shut Off Valve Bushing	1	# 46	193-782-6	Silencer Cover	1	# 79	981-208-0	Ball (5/16) Black	1
# 8	131-254-0	Shut Off Valve	1	# 46-1	193-042-5	Wire Net	1	# 80	982-203-0	Ball Bearing (6203)	1
# 9	136-927-6	Shut Off Valve Cover	1	# 47	193-854-7	Casing Packing	1	# 81	982-403-0	Ball Bearing (EE4)	1
# 10	193-025-7	Casing	1	# 48	193-867-7	Front Casing Packing	1	# 82	982-903-0	Ball Bearing (6902)	1
# 11	136-100-1	Valve	1	# 49	004-790-2	Suspension Ring	1	# 83	990-004-0	O-Ring (P-6)	1
# 12	053-102-3	Valve Bushing	1	# 50	944-002-0	Back-up Ring (2.6X4.5X1)	1	# 84	990-205-0	O-Ring (JW1516-5)	1
# 13	193-104-6	Valve Rod	1	# 51	944-214-0	Back-up Ring (12X15.9X1.5)	1	# 85	990-320-0	O-Ring (ARP-568-003)	1
# 14	137-107-1	Valve Lever	1	# 52	945-135-0	Allen Head Bolt (M5X35)	4	# 86	990-603-0	O-Ring (28.5X1.3)	2
# 15	135-091-7	Air Inlet Bushing	1	# 53	945-225-0	Allen Head Bolt (M6X25)	4	# 87	990-900-0	O-Ring (SNS2)	1
# 16	137-210-1	Reverse Valve	1	# 54	945-942-0	Hexagon Round Head Bolt (M4X6)	1	# 88	990-905-0	O-Ring (SNS7)	1
# 17	135-211-1	Reverse Valve Bushing	1	# 55	945-949-0	Hexagon Round Head Bolt (M5X6)	2	# 89	990-914-0	O-Ring (SNS16)	2
# 18	023-212-4	Reverse Lever	1	# 56	952-006-0	Allen Head Dog Point Screw (M3X16)	1	# 90	990-917-0	O-Ring (SNS24)	1
# 19	054-220-1	Reverse Lever Notch	1	# 57	952-108-0	Allen Head Dog Point Screw (M4X8)	1	# 91	990-919-0	O-Ring (SNS22)	1
# 20	137-222-1	Reverse Valve Setter	1	# 58	954-005-0	Allen Head Dog Point Screw (M3X5)	1	# 92	990-921-0	O-Ring (SNS22.4)	1
# 21	193-285-7	Rear Plate	1	# 59	961-012-0	Flat Washer 5	2	# 93	990-971-0	O-Ring (SNS3-NOK)	1
# 22	137-286-3	Cylinder	1	# 60	965-011-0	Heli-Sert (M5X1.5D)	4	# 95	990-213-0	O-Ring (1513-13)	1
# 23	137-287-1	Rotor	1	# 61	965-021-0	Heli-Sert (M6X1.5D)	4	# 96	990-152-0	O-Ring (P12-NTN)	1
# 24	193-288-0	Blade (PC)	6	# 62	965-073-0	Heli-Sert (UNF5/8XN6)	1	# 97	891-304-1	Socket Retainer Pin Assembly	1
# 25	187-289-3	Front Plate	1	# 63	972-221-0	Roller Pin (6X21)	3	# 98	891-342-1	Socket Spindle (P) Assy	1
# 26	193-291-7	Rear Plate Spacer	1	# 64	973-016-0	Roll Pin (2X16)	1	# 99	909-751-0	Joint Cable Assembly	1
# 27	193-439-7	Front Casing	1	# 65	973-066-0	Roll Pin (2.5X6)	2	# 100	909-754-0	LED Lump Assembly	1
# 28	185-901-1	Liner Rear Plate	1	# 66	973-072-0	Roll Pin (2.5X12)	1	# 101	909-753-0	Solenoid Valve Assembly	1
# 29	186-902-1	Liner	1	# 67	973-108-0	Roll Pin (3X8)	2				
# 30	193-319-7	Anvil	1	# 68	973-114-0	Roll Pin (3X14)	2				
# 31	186-440-1	Driving Blade	1	# 69	973-340-0	Roll Pin (6X10)	1				
# 32	193-904-7	Liner Front Plate	1	# 70	976-237-0	Spring (2.8X17.7X0.4)	2				
# 33	186-905-1	Liner Casing	1	# 71	976-025-0	Spring (3X8.5X0.5)	1				
# 34	185-906-1	Liner Casing Cover	1	# 72	976-241-0	Spring (4.3X18X0.45)	1				
# 35	186-907-3	Release Valve Spindle	1								
# 36	185-908-1	Accumulator Cover	1								
# 37	185-807-1	Spacer	1								
# 38	193-446-7	Anvil Gear	1								
# 39	193-470-7	Planet Gear	3								

### ACCESSORIES

# 102	940-114-0	Air Hose Nipple (NPT1/4X3/8)	1
# 103	193-790-7	Suspension Ball	1
# 104	193-791-6	Suspension Receiver	1
# 105	193-792-6	Suspension Plate	1
# 106	945-112-0	Allen Head Bolt (M5X12)	1
# 107	909-752-0	Sensor Cable Assy (3E5)	1
# 108	909-731-0	Connector (171822-4)	1
# 109	909-733-0	Connector (RF-06)	1

\*When ordering spare parts, please specify tool type, code number and parts name.

Printed in Japan



**URYU SEISAKU, LTD.** Osaka, Japan

OKA-341-02-10-31-2003