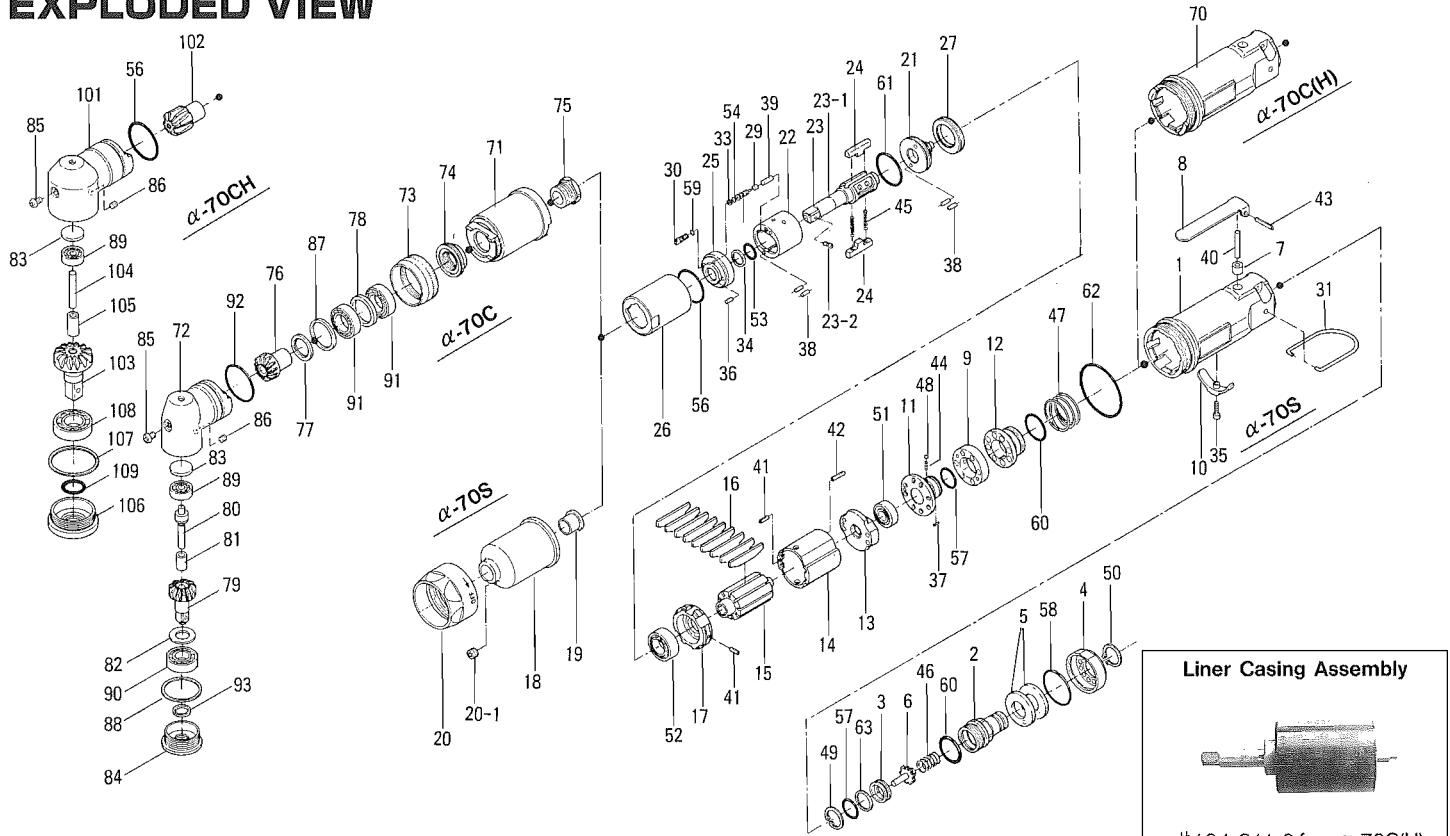


# α ALPHA 70S, 70C, 70CH OIL-PULSE TOOL

## EXPLODED VIEW



## PARTS LIST

Index No.	Code No.	Parts Name	Quantity	Index No.	Code No.	Parts Name	Quantity	Index No.	Code No.	Parts Name	Quantity
# 1	162-025-0	Casing	1	#36	969-449-0	Pin (G) (3×6)	1	#78	179-423-6	Driving Gear Metal Spacer	1
# 2	162-091-0	Air Inlet Bushing	1	#37	970-091-0	Pin (H) (2×4.5)	1	#79	891-346-1	Driven Gear (P) Assy	1
# 3	162-092-0	Air Inlet Bushing Spacer	1	#38	970-204-0	Pin (H) (3×6)	4	#80	188-431-7	Driven Gear Spindle	1
# 4	162-780-0	Exhaust Cover	1	#39	970-310-0	Pin (H) (4×10)	1	#81	020-432-1	Driven Gear Collar	1
# 5	259-835-6	Filter	2	#40	970-340-0	Pin (H) (4×28)	1	#82	020-433-1	Driven Gear Spacer	1
# 6	259-100-6	Valve	1	#41	973-068-0	Roll Pin (2.5×8)	2	#83	562-391-7	Wheel Spindle Rear Cover	1
# 7	553-103-1	Valve Rod Bushing	1	#42	973-076-0	Roll Pin (2.5×16)	1	#84	179-488-6	Angle Casing Cover	1
# 8	196-107-7	Throttle Lever	1	#43	973-124-0	Roll Pin (3×24)	1	#85	945-949-0	Hexagon Round Head Bolt (M5×6)	1
# 9	171-210-0	Reverse Valve	1	#44	976-006-0	Spring (3×5×0.4)	1	#86	954-206-0	Allen Head Cone Point Screw (M5×6)	1
#10	162-212-0	Reverse Lever	1	#45	976-793-0	Spring (3.7×29×0.5)WPC	2	#87	975-803-0	Adjusting Spacer (30×26×t)	1
#11	162-222-0	Reverse Valve Retainer	1	#46	976-321-0	Spring (13×14×1.0)	1	#88	975-836-0	Adjusting Spacer (36×32.5×t)	1
#12	162-226-0	Auxiliary Reverse Valve	1	#47	976-679-0	Spring (31×14×1.6)	1	#89	982-021-0	Ball Bearing (626)	1
#13	162-285-0	Rear Plate	1	#48	981-002-0	Ball (1/8)	1	#90	982-101-0	Ball Bearing (6001)	1
#14	162-286-0	Cylinder	1	#49	979-319-0	Inner Snap Ring (IRTW-19)	1	#91	982-904-0	Ball Bearing (6903)	2
#15	164-287-0	Rotor	1	#50	979-358-0	Inner Snap Ring (ISTW-17)	1	#92	990-922-0	O-Ring (SNS-28)	1
#16	164-288-0	Blade	9	#51	982-402-0	Ball Bearing (EE3)	1	#93	993-003-0	Felt Ring (12×16×2)	1
#17	162-289-0	Front Plate	1	#52	982-903-0	Ball Bearing (6902)	1	<b>Parts for α-70CH</b>			
#18	162-439-0	Front Casing	1	#53	990-152-0	O-Ring (P12-NTN)	1	# 70	160-025-7	Casing	1
#19	190-328-6	Anvil Bushing	1	#54	990-320-0	O-Ring (ARP568-003)	1	# 71	171-439-0	Front Casing	1
#20	180-081-4	Front Case Nut	1	#55	990-334-0	O-Ring (JW1530-24)	1	#101	171-441-0	Angle Casing	1
#20-1	966-099-0	Allen Head Plug (1/16GM)	1	#56	990-590-0	O-Ring (17×1)	2	#102	171-420-0	Driving Gear	1
#21	194-901-0	Rear Liner Plate	1	#57	990-603-0	O-Ring (28.5×1.3)	1	#103	171-430-0	Driven Gear	1
#22	194-902-1	Liner	1	#58	990-900-0	O-Ring (SNS-2)	1	#104	171-431-0	Driven Gear Spindle	1
#23	194-319-0	Anvil (OP-O)	1	#59	990-919-0	O-Ring (SNS-22)	1	#105	171-432-0	Driven Gear Collar	1
#23-1	891-309-1	Anvil (OP-P) Assembly	1	#60	990-919-0	O-Ring (SNS-22)	1	#106	171-488-0	Angle Casing Cover	1
#23-2	891-300-1	Socket Pin Assembly	1	#61	990-923-0	O-Ring (SNS-26)	1	#107	975-875-0	Adjusting Spacer (44×40.2×t)	1
#24	194-440-0	Driving Blade	2	#62	990-928-0	O-Ring (SNS-38)	1	#108	982-103-0	Ball Bearing (6003)	1
#25	194-904-0	Front Liner Plate	1	#63	996-432-0	Packing (19×10.5×1)	1	#109	990-156-0	O-Ring (P16-NTN)	1
#26	194-905-0	Liner Casing	1	<b>Parts for α-70C</b>				<b>ACCESSORIES</b>			
#27	194-906-0	Liner Casing Cover	1	#70	160-025-7	Casing	1	#110	939-091-0	Allen Wrench (1.5) for α-70S	1
#28	194-907-0	Relief Valve Spindle	1	#71	171-439-0	Front Casing	1	#111	939-105-0	Allen Wrench (4) for α-70S	1
#29	194-970-1	Relief Valve	1	#72	160-441-7	Angle Casing	1	#112	939-108-0	Allen Wrench(1.5) for α-70C(H)	1
#30	194-742-0	Oil Plug	1	#73	171-382-0	Hammer Casing Nut	1				
#31	191-790-1	Suspension Ring	1	#74	160-797-7	Bearing Setter	1				
#33	944-002-0	Supporting Ring (2.6×4.5×1)	1	#75	160-799-7	Bearing Setter Nut	1				
#34	944-013-0	Supporting Ring Endless (P12)	1	#76	179-420-6	Driving Gear	1				
#35	945-000-0	Allen Head Bolt (M3×8)	1	#77	179-425-6	Driving Gear Spacer	1				

When ordering spare parts, please Specify tool type, code number and parts name.

Printed in Japan



**URYU SEISAKU, LTD.** Osaka, Japan