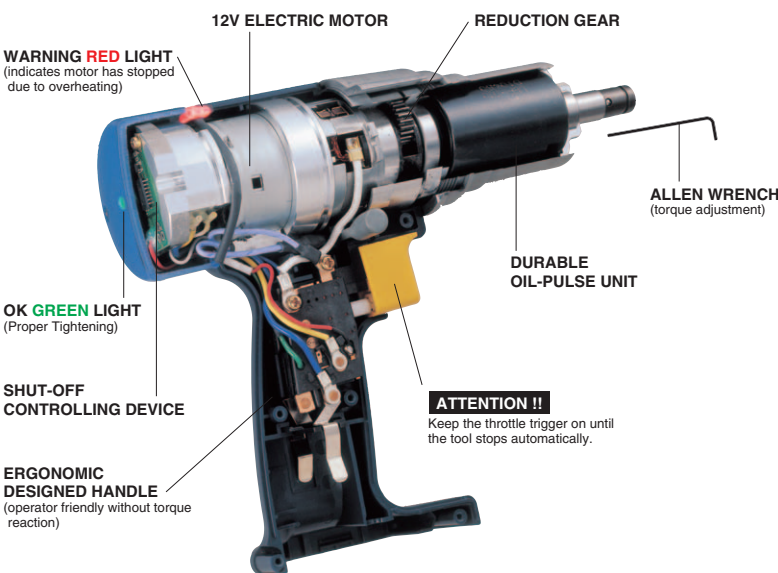


BATTERY OIL-PULSE TOOLS

UBP-T series 12V Battery Powered Oil-Pulse Tools offer the most convenient cordless operation without dragging tool hoses. The characteristics of the shut-off torque mechanism eliminates the operator influence and increases the torque accuracy for continuous heavy production.

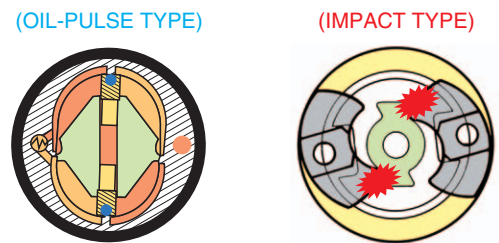
PISTOL TYPE (12V)



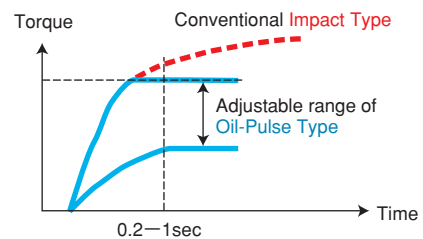
UBP SERIES

Offer a healthy work environment featuring operator comfort while reducing fatigue. The Hydraulic Pulse Action of Battery Oil-Pulse tools minimizes noise & vibration generated by the structural metal-to-metal contact of Battery Impact Types, eliminating most wearing parts thus producing cost savings in addition to easy torque adjustment.

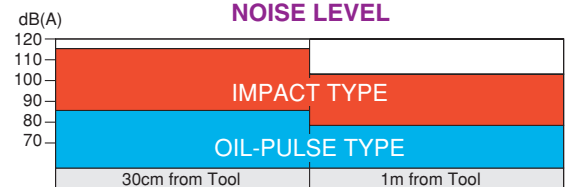
DIFFERENCE OF FASTENING MECHANISM



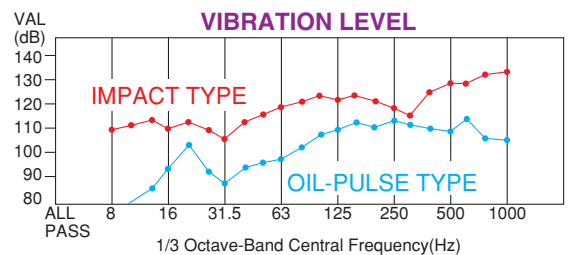
TORQUE CHART



NOISE LEVEL



VIBRATION LEVEL



SPECIFICATIONS

| Model | Capacity (Nominal Bolt Size) | | Torque range | | Free Speed (Approx.) rpm | Overall Length (about) | | Weight less Battery (about) | | From Center to Outside (about) | | Sq. Drive or Hex. Size | | Number of Fastening per charge (about) | | Noise Level dB(A) |
|------------|------------------------------|----------|--------------|-----------|--------------------------|------------------------|---------|-----------------------------|------|--------------------------------|--------|------------------------|-----|--|------------|-------------------|
| | mm | in | Nm | ft-lbs | | mm | in | kg | lb | mm | in | mm | in | Hard Joint | Soft Joint | |
| UBP-T40 | 6 | 1/4 | 6.5-11 | 4.8-8.1 | 2,200 | 211 | 8 5/16 | 1.2 | 2.64 | 28.0 | 1 7/64 | 6.35 | 1/4 | 420 | 170 | 85 |
| UBP-T50 | 6-8 | 1/4-5/16 | 10-23 | 7.4-17.0 | 2,200 | 211 | 8 5/16 | 1.2 | 2.64 | 28.0 | 1 7/64 | 6.35 | 1/4 | 480 | 210 | 85 |
| UBP-T50(P) | 6-8 | 1/4-5/16 | 10-23 | 7.4-17.0 | 2,200 | 211 | 8 5/16 | 1.2 | 2.64 | 28.0 | 1 7/64 | 9.5 | 3/8 | 480 | 210 | 85 |
| UBP-T60 | 8 | 5/16 | 14-26 | 10.4-19.2 | 2,200 | 216 | 8 1/2 | 1.3 | 2.85 | 28.0 | 1 7/64 | 6.35 | 1/4 | 470 | 190 | 85 |
| UBP-T60(P) | 8 | 5/16 | 14-26 | 10.4-19.2 | 2,200 | 212 | 8 11/32 | 1.3 | 2.85 | 28.0 | 1 7/64 | 9.5 | 3/8 | 470 | 190 | 85 |
| UBP-65※ | 8 | 5/16 | 15-30 | 11.1-22.2 | 2,200 | 189 | 7 7/16 | 1.2 | 2.64 | 28.0 | 1 7/64 | 6.35 | 1/4 | 510 | 150 | 83 |
| UBP-65(P)※ | 8 | 5/16 | 20-37 | 14.8-27.4 | 2,200 | 189 | 7 7/16 | 1.2 | 2.64 | 28.0 | 1 7/64 | 9.5 | 3/8 | 510 | 150 | 83 |

Numbers of tightenings per charge varies depending on torque level, fastener length and application. ※Non Shut-off Type
 Recommended Battery Charger : Panasonic Model EY0230B(AC110V~230V). Recommended Battery Pack : Panasonic Model EY9200B(DC12V)
 (Please procure above parts from the local supplier of Panasonic products in your country.)